

SOUTHWEST MINNESOTA STATE UNIVERSITY

# Civic Engagement Survey 2014

---

Analysis of data collected July 1, 2013 through June 30, 2014



## Table of Contents

Background .....	2
Section I: General Information .....	3
Section II: SMSU Experience .....	13
Section III: Civic Minded Graduate Scale .....	24
CMG Subscale Scores .....	55
Knowledge Subscale .....	56
Skills Subscale .....	58
Dispositions Subscale .....	60
Behavioral Intentions Subscale .....	62
Section IV: Responsibility and Commitment .....	64
Responsibility and Commitment Comments .....	67
General Comments .....	80
Further Statistical Analysis .....	84
Reliability .....	85
Subscale Correlations .....	85
Cross-tabulations and Chi Squares .....	86
One-way ANOVAs .....	91
Appendix .....	97

# Background

Civic engagement is an integral part of the Southwest Minnesota State University (SMSU) mission statement and a priority area in university strategic planning. Student involvement in civic-related activities is promoted by the campus First Year Experience program, student clubs and organizations, academic departments and programs, and through a wide variety of course-related service-learning opportunities. Assessment of civic engagement on the SMSU campus is performed using the Civic Engagement Survey.

The Civic Engagement Survey was developed during the spring 2008 semester by SMSU faculty and staff and initially deployed as an online survey in April 2008. Graduating seniors are directed to complete this survey as part of their graduation requirements. Items on the survey measure students' demographics, their participation in volunteerism and other civic-oriented activities sponsored by SMSU, as well as their "civic-mindedness". Civic-mindedness is measured using the Civic Minded Graduate (CMG) Scale, adopted from the Center for Service and Learning at Indiana University – Purdue University at Indianapolis (IUPUI).

Data collected from spring 2008 and summer 2008 graduates (n=168) was reported in a poster presentation at the 2008 SMSU Undergraduate Research Conference and subsequently in a presentation at the 2009 SMSU Strategic Planning Day. For subsequent academic years, the data have been compiled and reported in a series of Civic Engagement Survey documents. Copies of all data files and report documents are maintained by the SMSU Center for Civic Engagement.

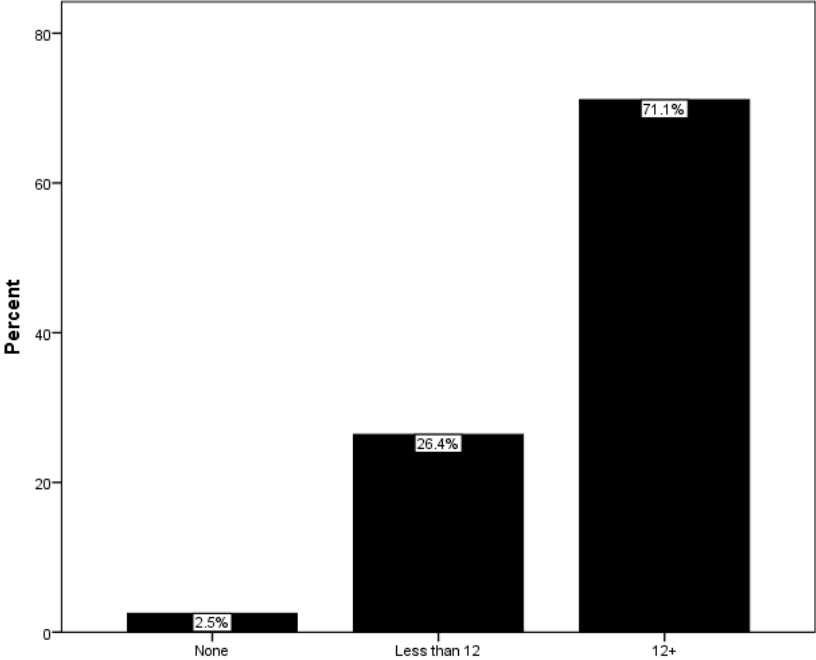
The present report summarizes data collected between July 1, 2013 and June 30, 2014. A total of 481 students completed the survey during this time period. In addition, this report includes trend analysis data for the last five academic years: 2009-2010, 2010-2011, 2011-2012, 2012-2013, and 2013-2014. Data collected prior to the 2009-2010 academic year were not included in the trend analysis because they were obtained using a previous version of the Civic Engagement Survey, which utilized significantly different response categories for many of the items. A copy of the current Civic Engagement Survey instrument can be found in the Appendix.

# Section I: General Information

Section I of the Civic Engagement Survey asks students to report various demographic characteristics. Data collected for each survey item are presented on a separate page in this section. A summary table is presented at the end of the section providing a review of the demographic characteristics for the past four academic years.

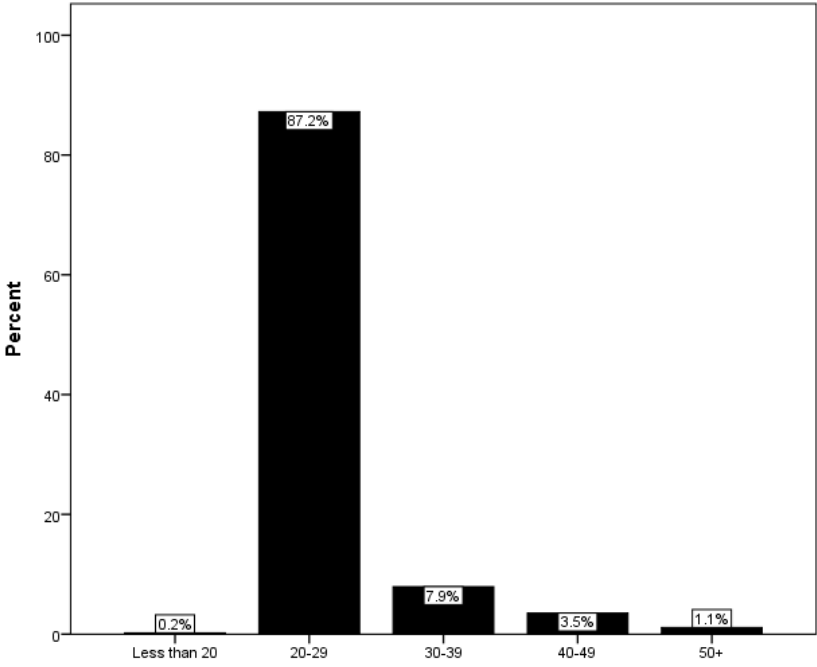
### Current number of credit hours enrolled

	Frequency	Percent	Valid Percent
Valid None	12	2.5	2.5
Less than 12	127	26.4	26.4
12+	342	71.1	71.1
Total	481	100.0	100.0



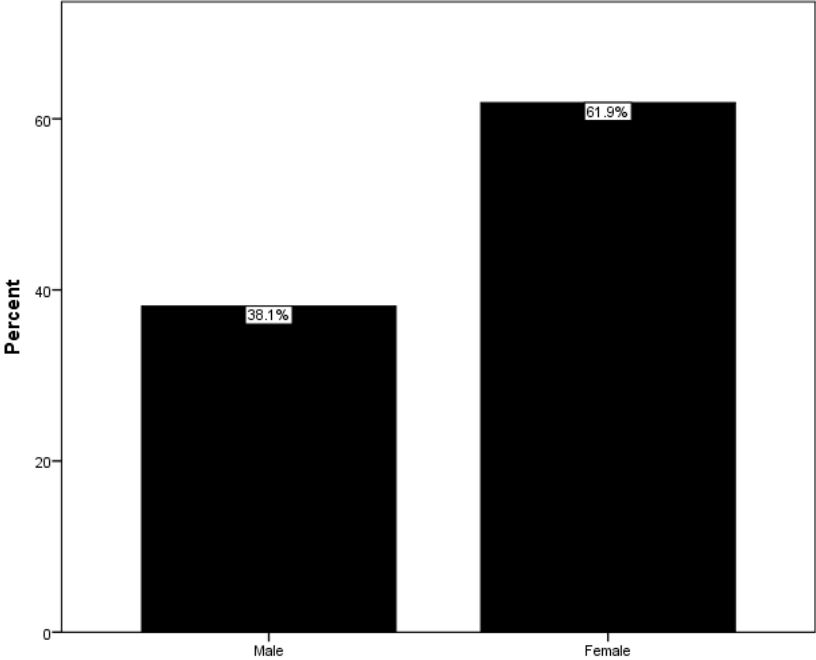
### Age

		Frequency	Percent	Valid Percent
Valid	Less than 20	1	0.2	0.2
	20-29	396	82.3	87.2
	30-39	36	7.5	7.9
	40-49	16	3.3	3.5
	50+	5	1.0	1.1
	Total	454	94.4	100.0
Missing		27	5.6	
Total		481	100.0	



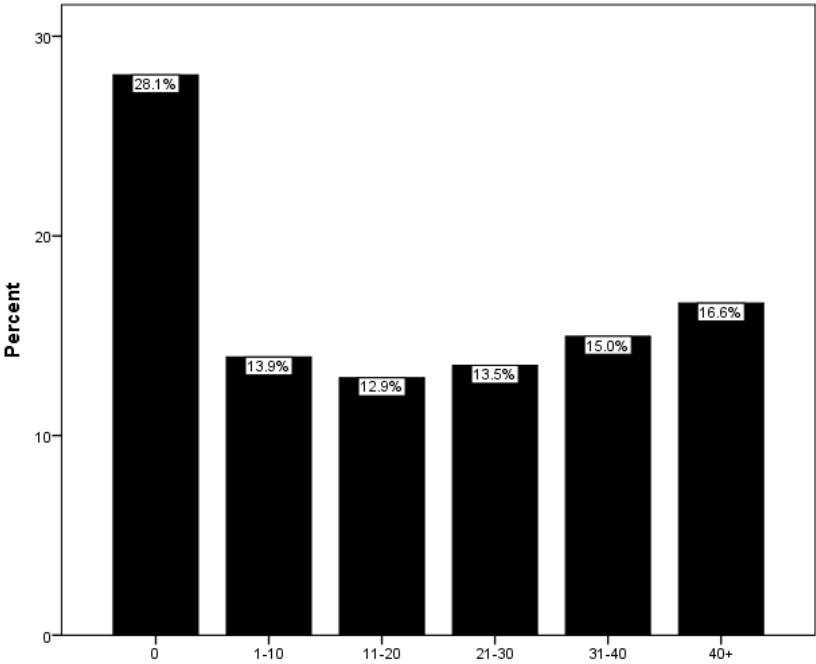
### Gender

		Frequency	Percent	Valid Percent
Valid	Male	181	37.6	38.1
	Female	294	61.1	61.9
	Total	475	98.8	100.0
Missing		6	1.2	
Total		481	100.0	



### Number of Hours Currently Working in a Week

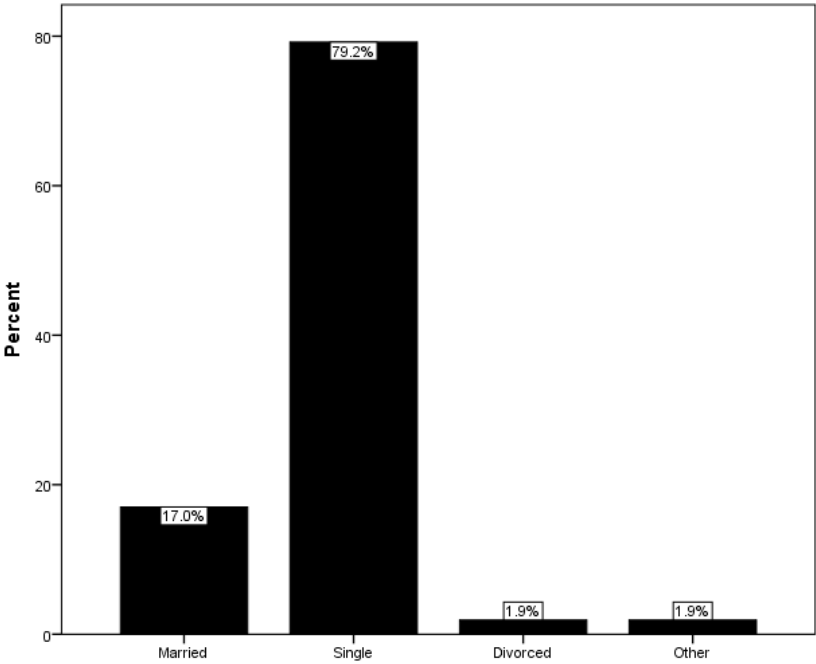
		Frequency	Percent	Valid Percent
Valid	0	135	28.1	28.1
	1-10	67	13.9	13.9
	11-20	62	12.9	12.9
	21-30	65	13.5	13.5
	31-40	72	15.0	15.0
	40+	80	16.6	16.6
	Total	481	100.0	100.0





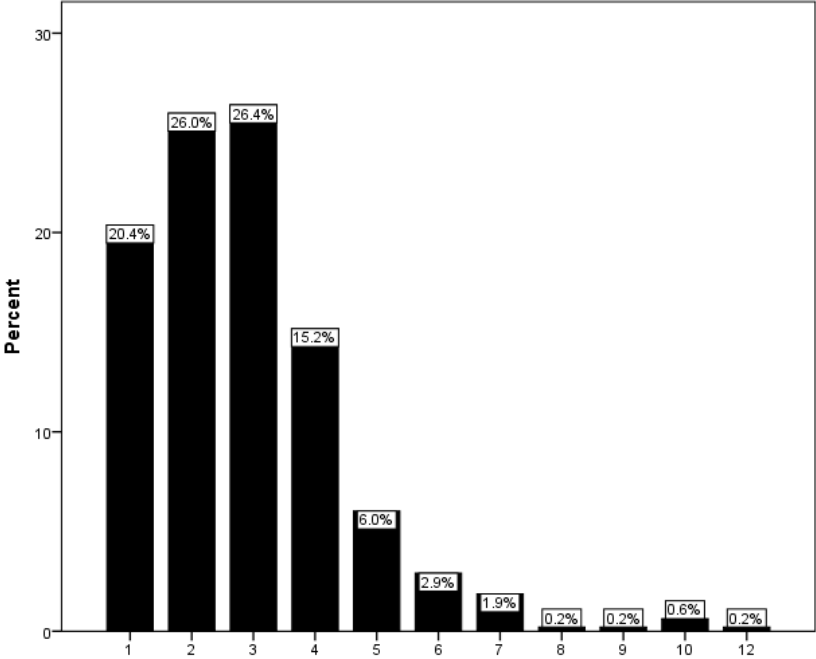
### Marital Status

		Frequency	Percent	Valid Percent
Valid	Married	81	16.8	17.0
	Single	377	78.4	79.2
	Divorced	9	1.9	1.9
	Other	9	1.9	1.9
	Total	476	99.0	100.0
Missing		5	1.0	
Total		481	100.0	



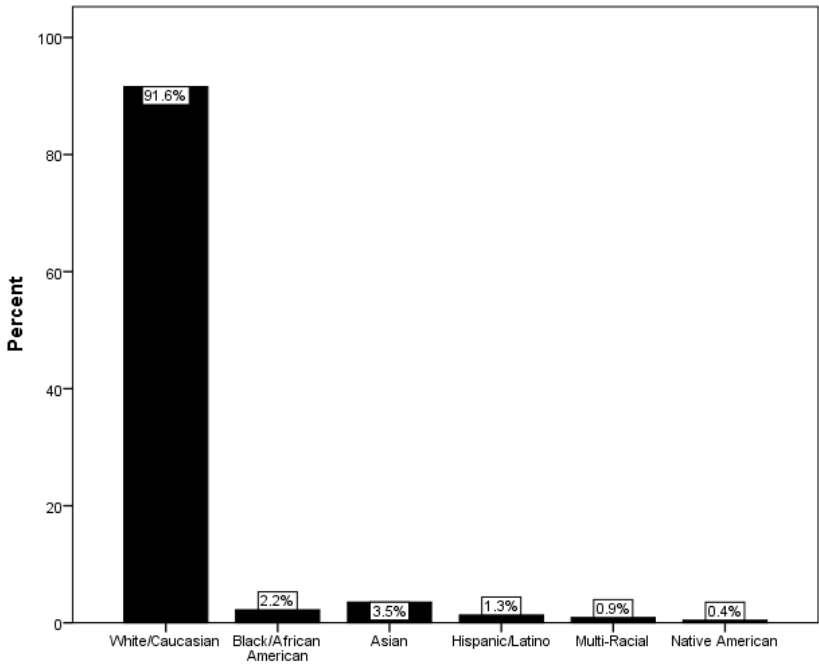
### Number of children in your family

		Frequency	Percent	Valid Percent
Valid	1	98	20.4	20.4
	2	125	26.0	26.0
	3	127	26.4	26.4
	4	73	15.2	15.2
	5	29	6.0	6.0
	6	14	2.9	2.9
	7	9	1.9	1.9
	8	1	0.2	0.2
	9	1	0.2	0.2
	10	3	0.6	0.6
	12	1	0.2	0.2
	Total		481	100.0



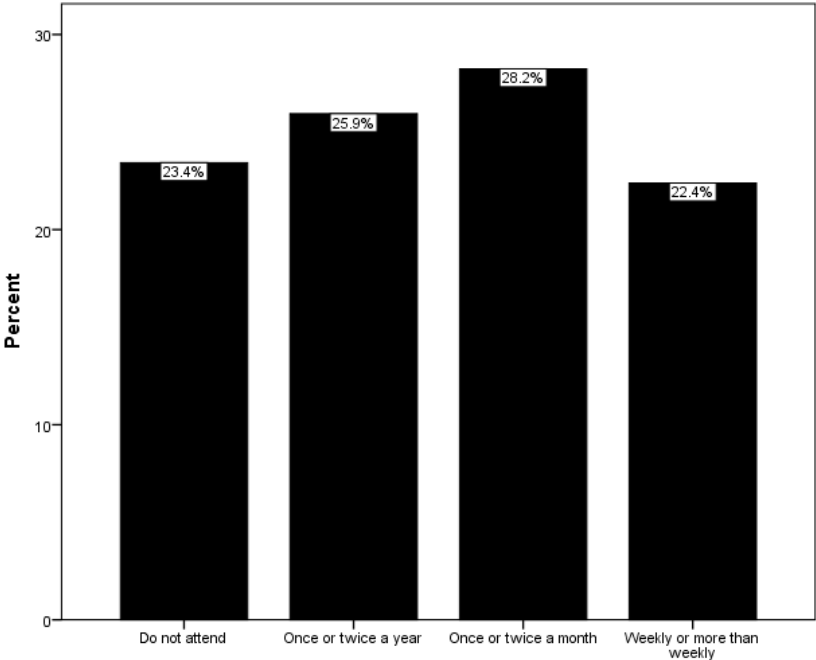
Race

		Frequency	Percent	Valid Percent
Valid	White/Caucasian	207	43.0	91.6
	Black/African American	5	1.0	2.2
	Asian	8	1.7	3.5
	Hispanic/Latino	3	0.6	1.3
	Multi-Racial	2	0.4	0.9
	Native American	1	0.2	0.4
	Total	226	47.0	100.0
Missing		255	53.0	
Total		481	100.0	



### How often do you attend religious activities?

		Frequency	Percent	Valid Percent
Valid	Do not attend	112	23.3	23.4
	Once or twice a year	124	25.8	25.9
	Once or twice a month	135	28.1	28.2
	Weekly or more than weekly	107	22.2	22.4
	Total	473	99.4	100.0
Missing		3	0.6	
Total		481	100.0	



## Demographic Trend Analysis

Demographic	Response	2010	2011	2012	2013	2014
Number		474	469	443	454	481
Mean Age		24.8	25.1	24.8	25.3	24.8
Mean Number of Children in Your Family		2.9	2.7	2.9	2.8	2.9
Current Number of Hours Enrolled	None	4.6%	3.4%	2.5%	2.0%	2.5%
	<12	24.7%	26.4%	24.5%	22.0%	26.4%
	12+	70.7%	70.1%	72.9%	76.0%	71.1%
Gender	Male	39.3%	42.9%	39.7%	37.7%	38.1%
	Female	60.7%	57.1%	60.3%	62.3%	61.9%
Number of Hours Currently Working in a Week	0	30.6%	31.8%	26.6%	28.9%	28.1%
	1-10	12.7%	8.7%	10.8%	12.6%	13.9%
	11-20	19.0%	16.6%	18.1%	17.8%	12.9%
	21-30	14.3%	15.1%	15.8%	11.9%	13.5%
	31-40	12.0%	14.1%	14.2%	14.1%	15.0%
	40+	11.4%	13.6%	14.4%	14.8%	16.6%
Marital Status	Married	19.1%	22.3%	17.7%	17.7%	17.0%
	Single	75.5%	74.2%	78.0%	76.4%	79.2%
	Divorced	2.1%	1.7%	1.8%	3.3%	1.9%
	Other	3.2%	1.7%	2.5%	2.6%	1.9%
Race	White/Caucasian	36.9%	37.7%	42.0%	42.7%	43.0%
	Black/African American	2.1%	1.9%	1.4%	2.4%	1.0%
	Asian	4.4%	2.8%	3.4%	2.0%	1.7%
	Hispanic/Latino	0.8%	0.4%	0.2%	0.7%	0.6%
	Multi-racial	0.4%	0.0%	0.9%	0.4%	0.4%
	Native American	0.2%	0.2%	0.0%	0.9%	0.2%
	Other	0.0%	0.0%	0.5%	0.4%	0.0%
	Unspecified	55.1%	56.9%	51.7%	50.4%	53.0%
How Often Do You Attend Religious Activities?	Do not attend	21.7%	21.6%	24.0%	24.7%	23.4%
	Once or twice a year	21.7%	23.9%	26.1%	24.9%	25.9%
	Once or twice a month	29.8%	30.3%	26.8%	27.6%	28.2%
	Weekly or more than weekly	26.8%	24.1%	23.1%	22.7%	22.4%

Percents do not include missing values, with the exception of "Race" where missing values are categorized as "Unspecified".

## Section II: SMSU Experience

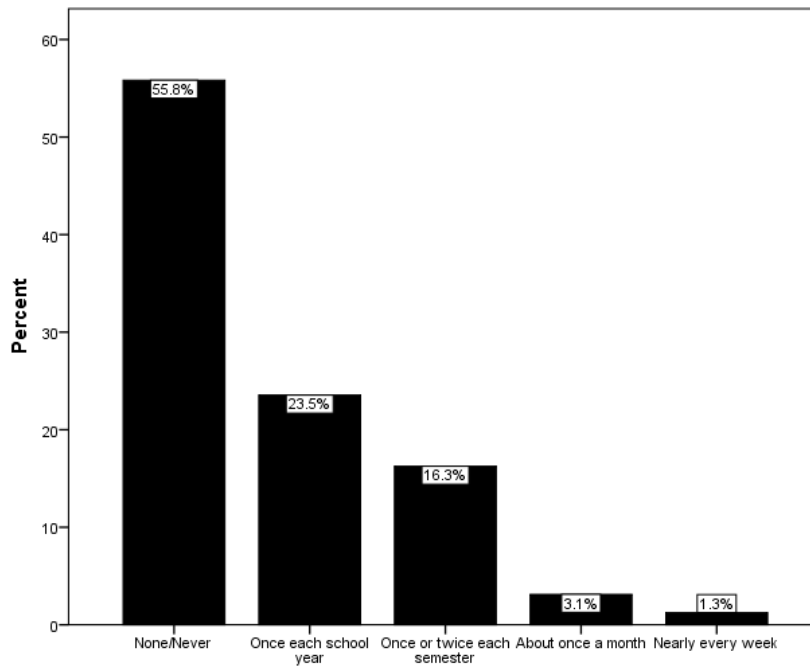
Section II of the Civic Engagement Survey asks students to report on the volunteering and community service experiences they have had while a student at SMSU. Data collected for each survey item are presented on a separate page in this section. For each item, current year data are reported followed immediately by the corresponding trend analysis data covering the past four academic years.

All survey items in this section of the survey were preceded by the following prompt:

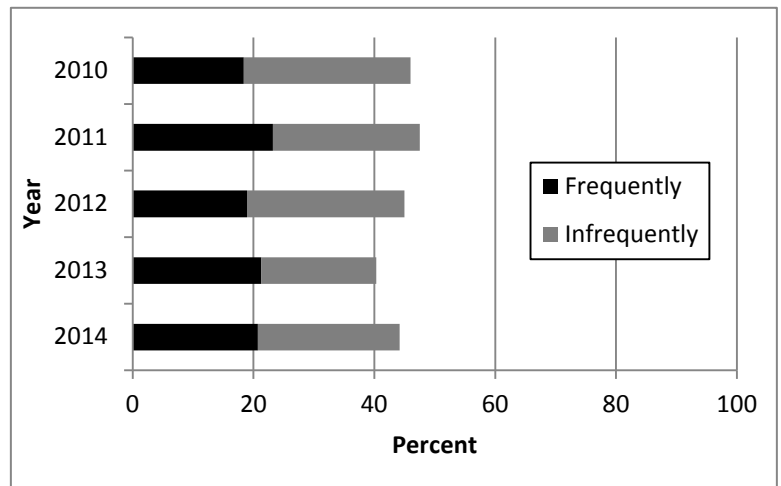
**Please indicate how often you have participated in the following as part of your student experiences at SMSU: 1= None/Never 2= Once each school year 3= Once or twice each semester 4= About once a month 5= Nearly every week**

Volunteering with others from SMSU for one-time service activities such as: helping out with a Habitat for Humanity project, being part of a food drive, or contributing to the Coats for Kids event

2014 Data		Frequency	Percent	Valid Percent
Valid	None/Never	268	55.7	55.8
	Once each school year	113	23.5	23.5
	Once or twice each semester	78	16.2	16.3
	About once a month	15	3.1	3.1
	Nearly every week	6	1.2	1.3
	Total	480	99.8	100.0
Missing		1	0.2	
Total		481	100.0	



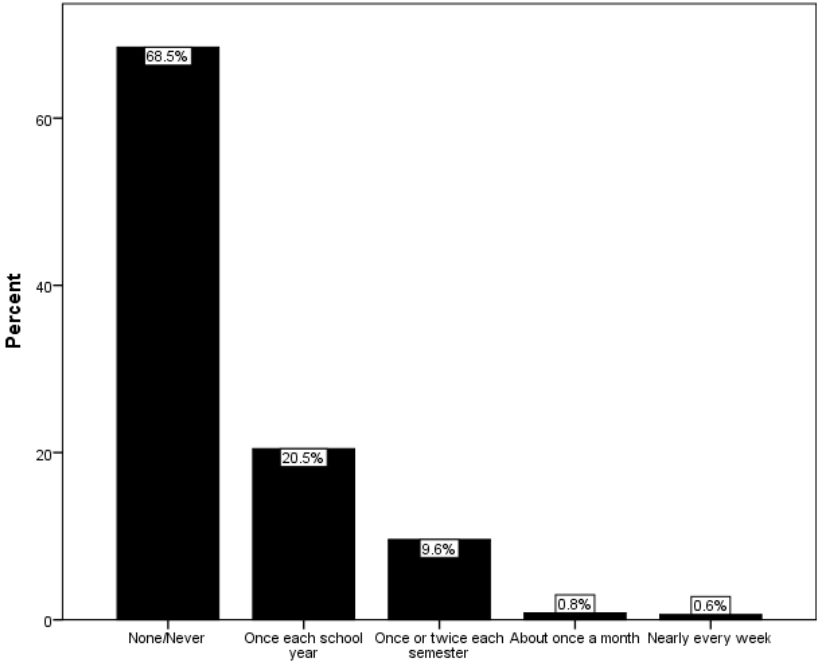
Year	Frequently	Infrequently	None/Never
2010	18.4%	27.6%	54.0%
2011	23.2%	24.3%	52.5%
2012	18.9%	26.1%	55.0%
2013	21.3%	19.0%	59.7%
2014	20.7%	23.5%	55.8%



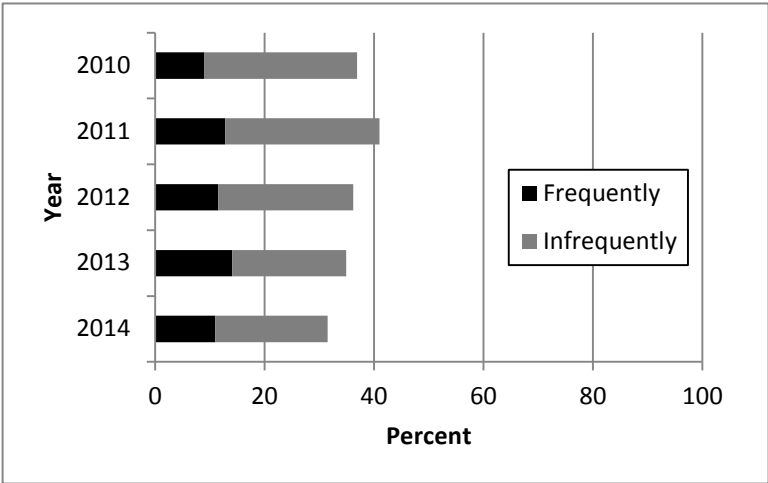
Frequently = Once or more per semester;  
 Infrequently = Less than once per semester

### Volunteering for campus events such as Relay for Life or the annual Chili Feed Cook-off (to support the local food shelf)

2014 Data		Frequency	Percent	Valid Percent
Valid	None/Never	328	68.2	68.5
	Once each school year	98	20.4	20.5
	Once or twice each semester	46	9.6	9.6
	About once a month	4	0.8	0.8
	Nearly every week	3	0.6	0.6
	Total	479	99.6	100.0
Missing		2	0.4	
Total		454	481	



Year	Frequently	Infrequently	None/Never
2010	9.0%	27.9%	63.1%
2011	12.8%	28.2%	59.0%
2012	11.5%	24.7%	63.8%
2013	14.1%	20.8%	65.1%
2014	11.0%	20.5%	68.5%

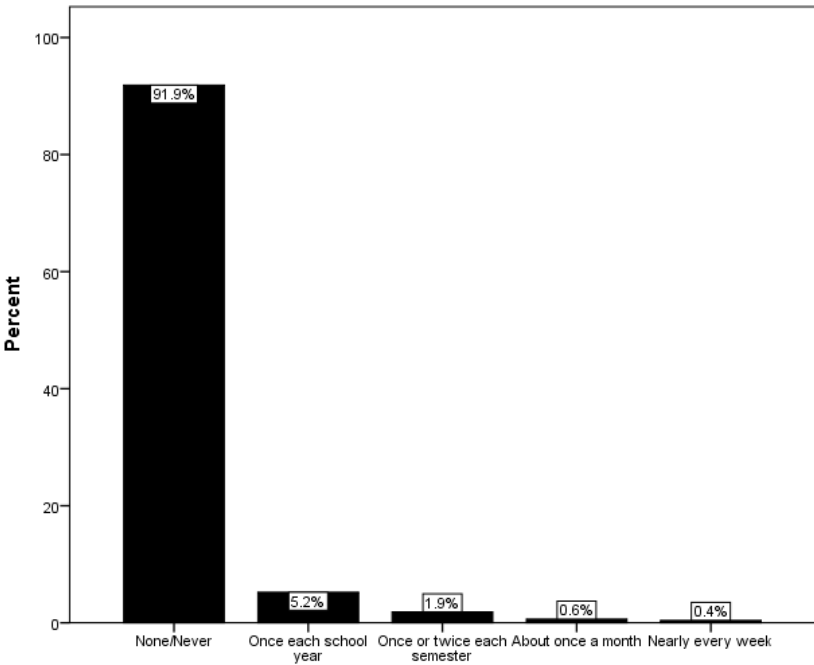


Frequently = Once or more per semester;  
 Infrequently = Less than once per semester

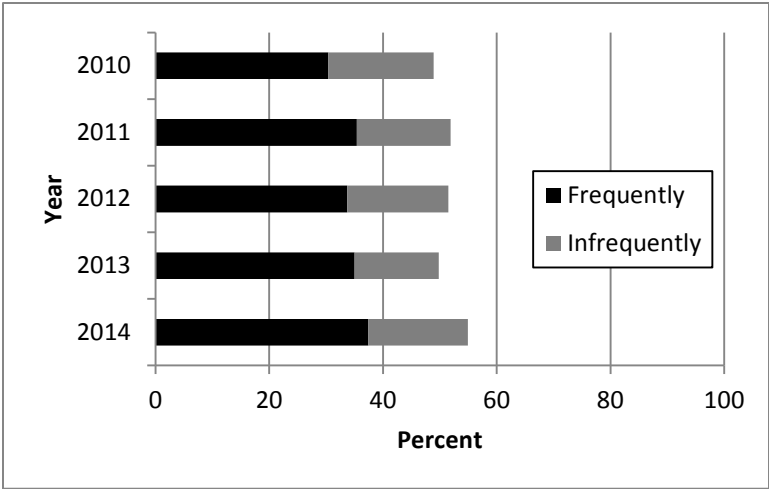


### Participation in a public debate, working on a political campaign, or assisting with voter registration

2014 Data		Frequency	Percent	Valid Percent
Valid	None/Never	440	91.5	91.9
	Once each school year	25	5.2	5.2
	Once or twice each semester	9	1.9	1.9
	About once a month	3	0.6	0.6
	Nearly every week	2	0.4	0.4
	Total	479	99.6	100.0
Missing		2	0.4	
Total		481	100.0	



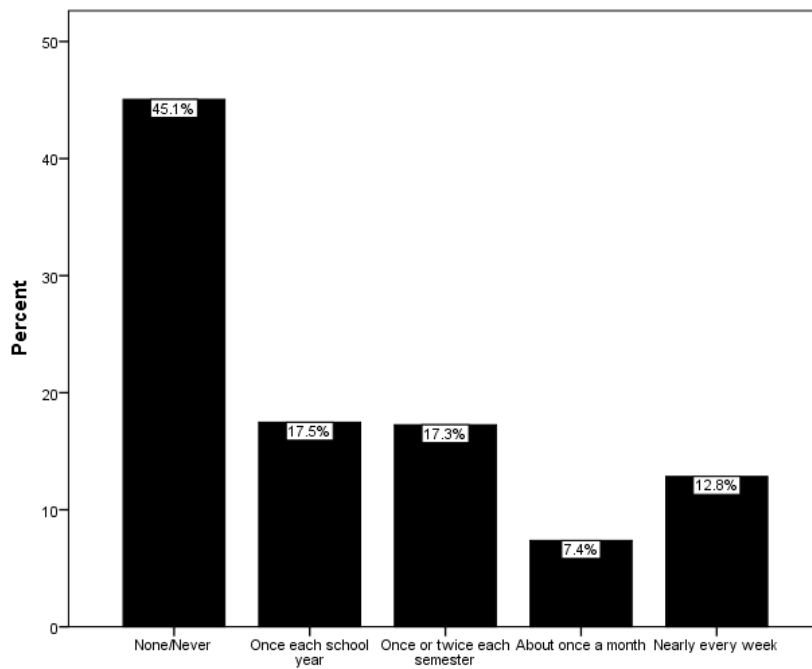
Year	Frequently	Infrequently	None/Never
2010	4.5%	6.7%	88.8%
2011	4.9%	7.1%	88.0%
2012	3.9%	5.4%	90.7%
2013	3.5%	9.3%	87.2%
2014	2.9%	5.2%	91.9%



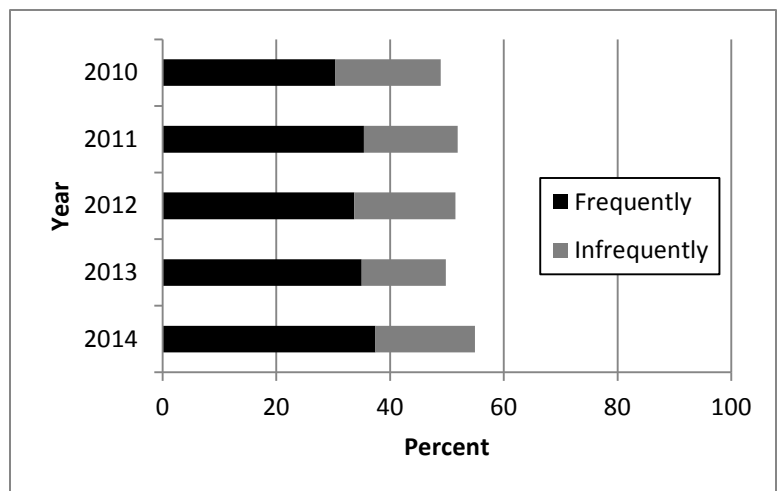
Frequently = Once or more per semester;  
 Infrequently = Less than once per semester

### Community involvement through a campus organization or club

2014 Data		Frequency	Percent	Valid Percent
Valid	None/Never	214	44.5	45.1
	Once each school year	83	17.3	17.5
	Once or twice each semester	82	17.0	17.3
	About once a month	35	7.3	7.4
	Nearly every week	61	12.7	12.8
	Total	475	98.8	100.0
		6	1.2	
	Total	481	100.0	



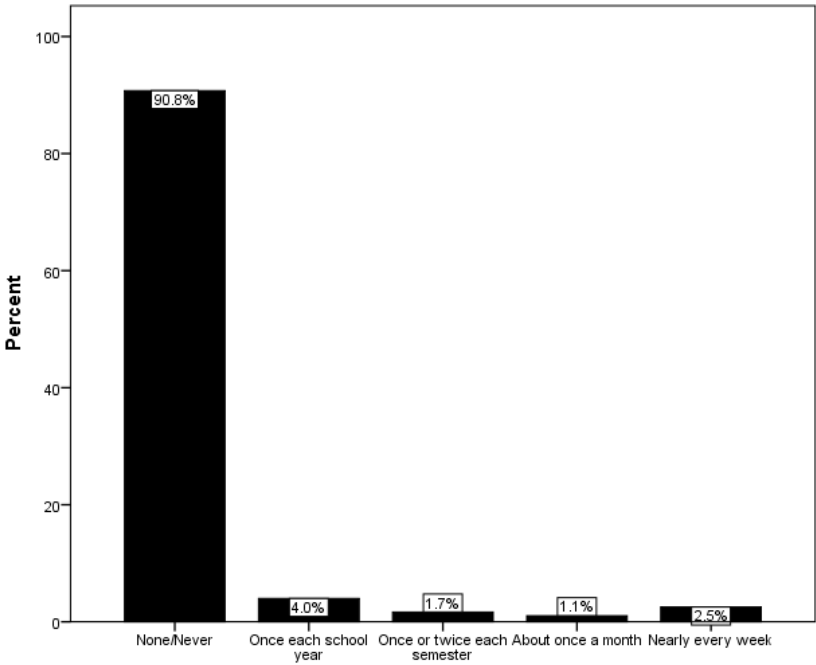
Year	Frequently	Infrequently	None/Never
2010	30.4%	18.5%	51.1%
2011	35.4%	16.5%	48.1%
2012	33.7%	17.8%	48.5%
2013	35.0%	14.8%	50.2%
2014	37.4%	17.5%	45.1%



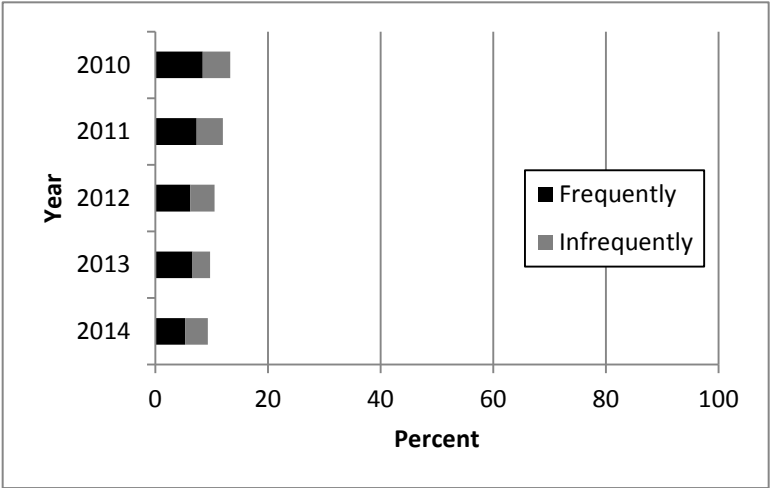
Frequently = Once or more per semester;  
 Infrequently = Less than once per semester

### Have you participated in community service through Federal Work Study?

2014 Data		Frequency	Percent	Valid Percent
Valid	None/Never	432	89.8	90.8
	Once each school year	19	4.0	4.0
	Once or twice each semester	8	1.7	1.7
	About once a month	5	1.0	1.1
	Nearly every week	12	2.5	2.5
	Total	476	99.0	100.0
Missing		5	1.0	
Total		481	100.0	



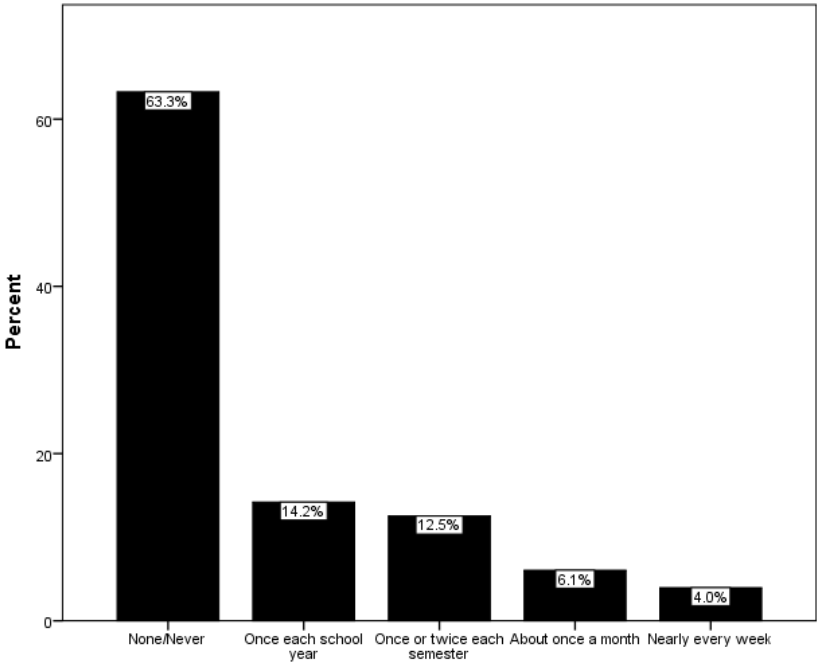
Year	Frequently	Infrequently	None/Never
2010	8.4%	4.9%	86.7%
2011	7.3%	4.7%	88.0%
2012	6.2%	4.3%	89.5%
2013	6.6%	3.1%	90.3%
2014	5.3%	4.0%	90.8%



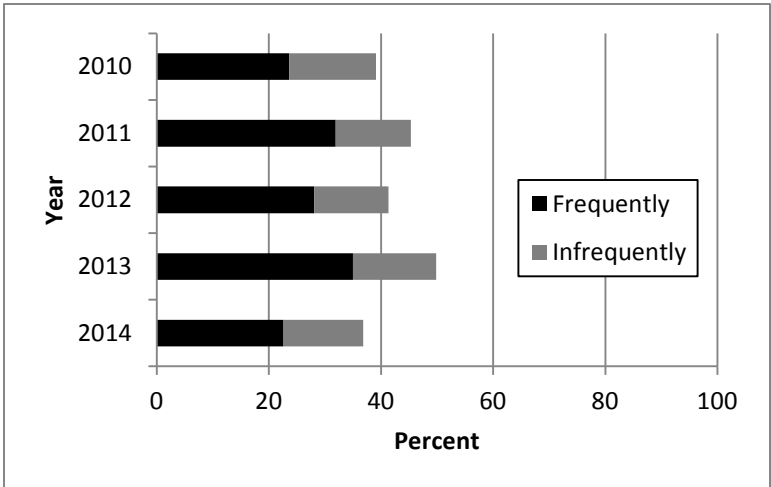
Frequently = Once or more per semester;  
 Infrequently = Less than once per semester

Have you participated in community service through an organization that was not connected to SMSU?

2014 Data		Frequency	Percent	Valid Percent
Valid	None/Never	303	63.0	63.3
	Once each school year	68	14.1	14.2
	Once or twice each semester	60	12.5	12.5
	About once a month	29	6.0	6.1
	Nearly every week	19	4.0	4.0
	Total	479	99.6	100.0
	Missing	2	0.4	
	Total	481	100.0	



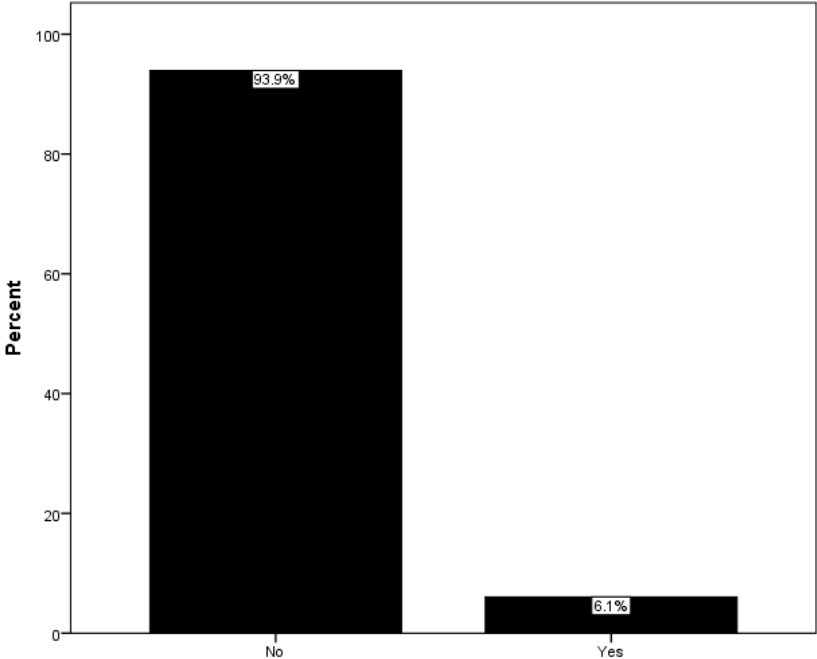
Year	Frequently	Infrequently	None/Never
2010	23.6%	15.5%	60.9%
2011	31.9%	13.4%	54.7%
2012	28.1%	13.2%	58.7%
2013	35.0%	14.8%	50.2%
2014	22.6%	14.2%	63.3%



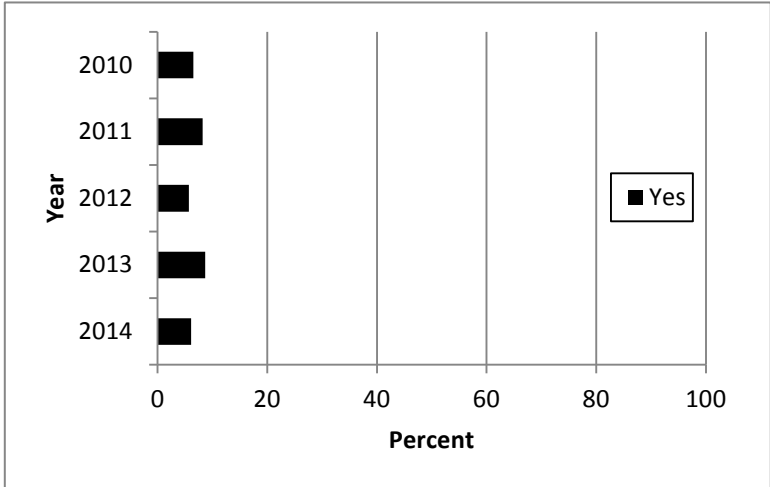
Frequently = Once or more per semester;  
 Infrequently = Less than once per semester

Have you ever participated in community service as part of a scholarship?

2014 Data		Frequency	Percent	Valid Percent
Valid	No	450	93.6	93.9
	Yes	29	6.0	6.1
	Total	479	99.6	100.0
Missing		2	0.4	
Total		481	100.0	

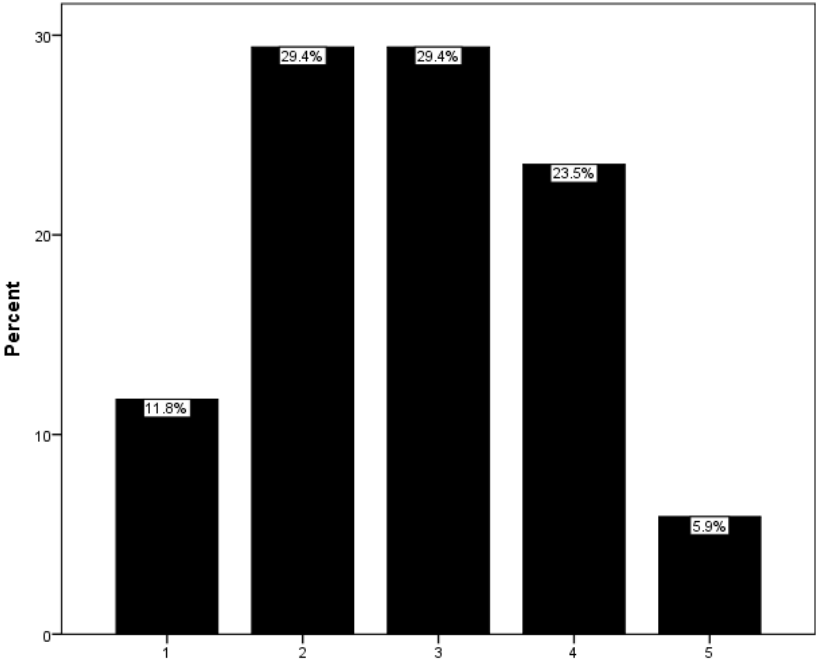


Year	Yes	No
2010	6.5%	93.5%
2011	8.2%	91.8%
2012	5.7%	94.3%
2013	8.7%	91.3%
2014	6.1%	93.9%



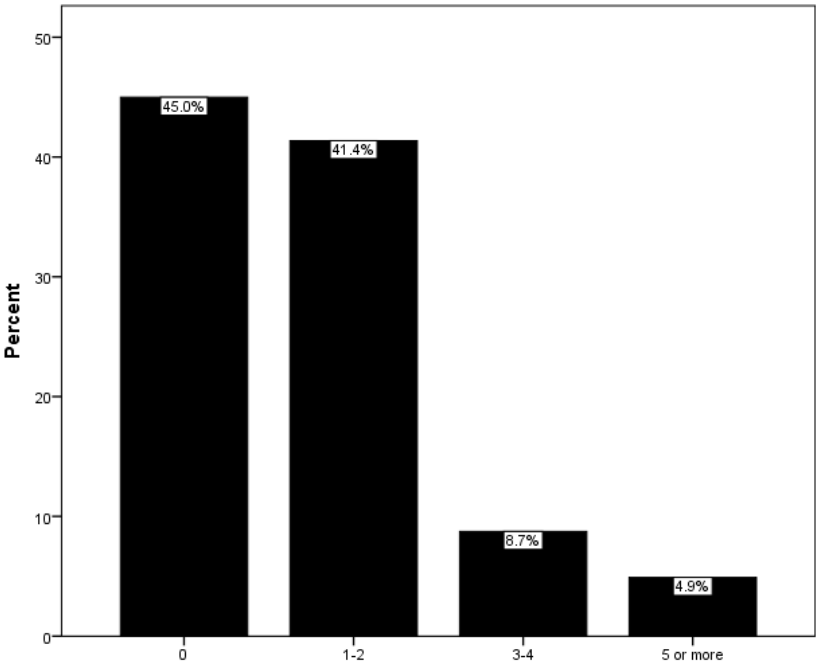
If involved in community service as part of a scholarship, for how many years?

2014 Data		Frequency	Percent	Valid Percent
Valid	1	2	0.4	11.8
	2	5	1.0	29.4
	3	5	1.0	29.4
	4	4	0.8	23.5
	5	1	0.2	5.9
Total		17	3.5	100.0
Missing		464	96.5	
Total		481	100.0	

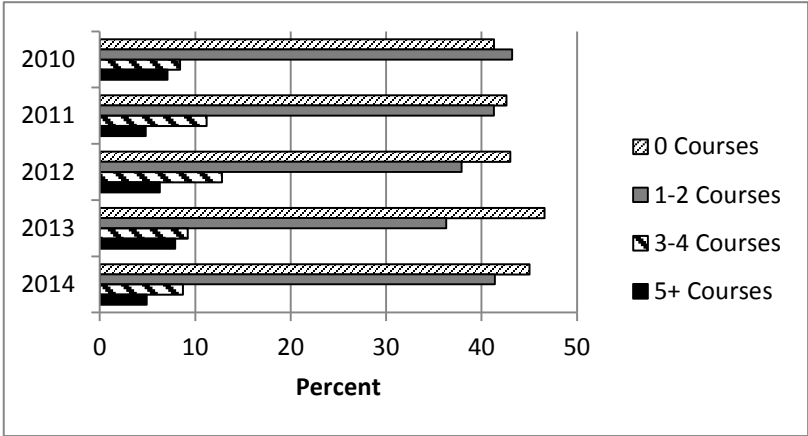


Please estimate the number of courses that you have taken at SMSU that have included community involvement such as volunteer service, community-based learning experiences, one-time service projects, or other service activities.

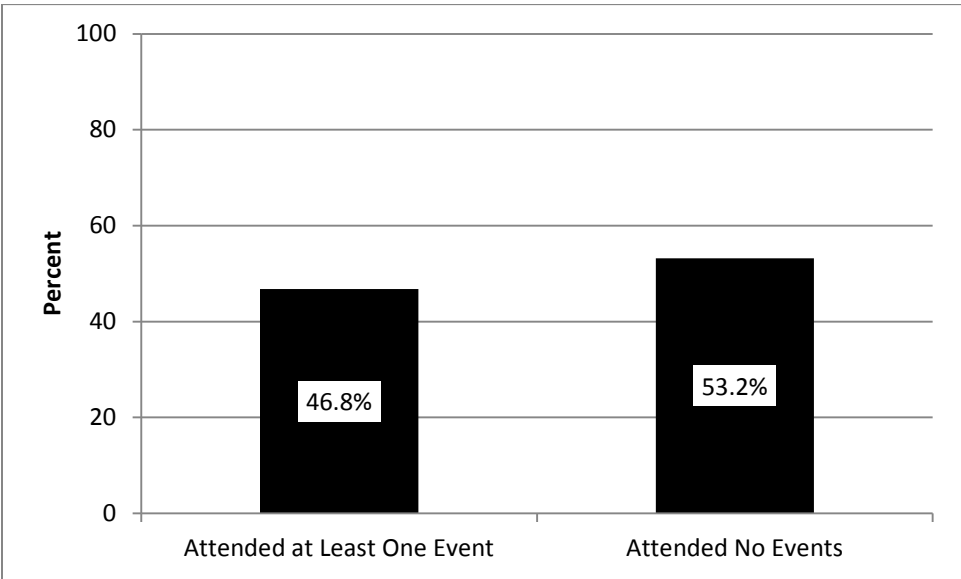
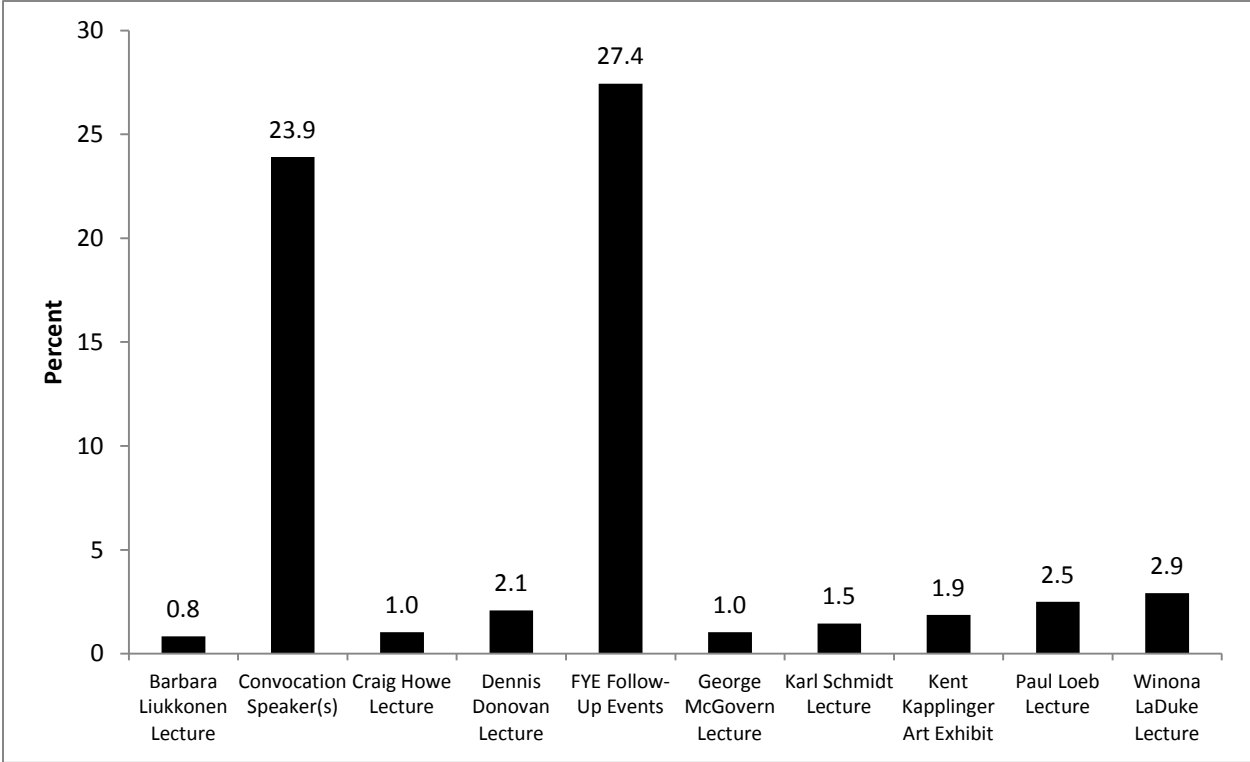
2014 Data		Frequency	Percent	Valid Percent
Valid	0	211	43.9	45.0
	1-2	194	40.3	41.4
	3-4	41	8.5	8.7
	5 or more	23	4.8	4.9
	Total	469	97.5	100.0
Missing		12	2.5	
Total		481	100.0	



Year	Number of Courses			
	0	1-2	3-4	5+
2010	41.3%	43.2%	8.4%	7.1%
2011	42.6%	41.3%	11.2%	4.8%
2012	43.0%	37.9%	12.8%	6.3%
2013	46.6%	36.3%	9.2%	7.9%
2014	45.0%	41.4%	8.7%	4.9%



Which of the following First Year Experience events have you attended at SMSU?  
(Check all that apply.)





## Section III: Civic Minded Graduate Scale

Section III of the Civic Engagement Survey consisted of the 30-item Civic Minded Graduate [CMG] scale. This scale is used to measure students' knowledge, skills, attitudes, and behavioral intentions toward civic engagement. Data collected for each survey item are presented on a separate page in this section. At the end of the section, data for each of the subscales are compiled and are immediately followed by a trend analysis covering the past four academic years.

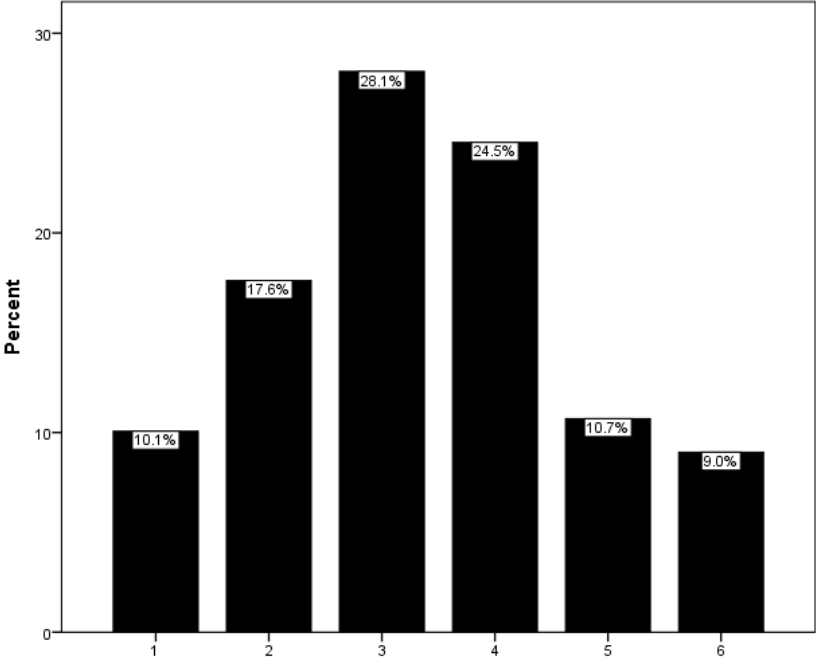
All survey items in this section of the survey were preceded by the following prompt:

**Please indicate whether you agree or disagree with the following. 1= Strongly Disagree 6= Strongly Agree**

[CMG1] My experiences at SMSU have helped me know a lot about opportunities to become involved in the community. (1=Strongly Disagree; 6=Strongly Agree)

N	Valid	477
	Missing	4
Mean		3.35
Std. Deviation		1.394

		Frequency	Percent	Valid Percent
Valid	1	48	10.0	10.1
	2	84	17.5	17.6
	3	134	27.9	28.1
	4	117	24.3	24.5
	5	51	10.6	10.7
	6	43	8.9	9.0
	Total	477	99.2	100.0
Missing		4	0.8	
Total		481	100.0	

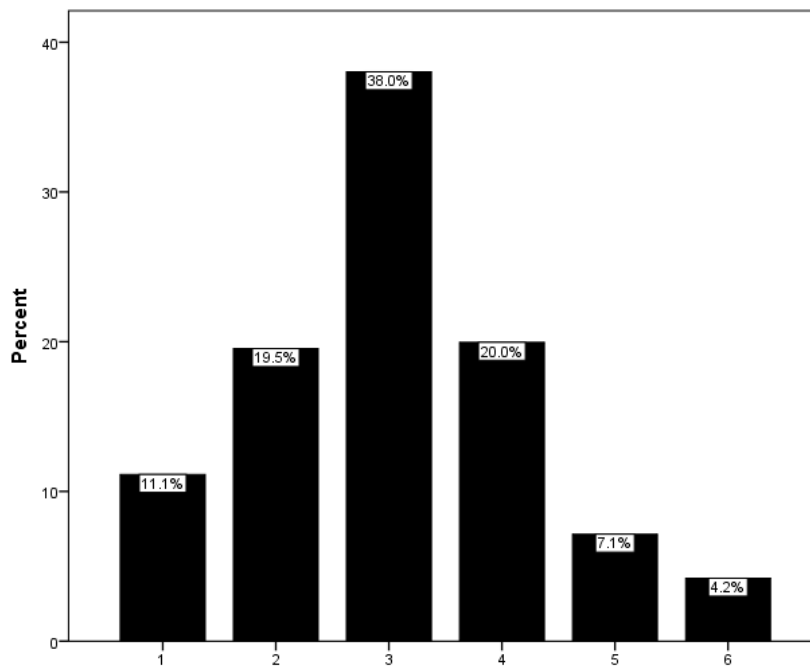


[CMG2] As a result of my experiences at SMSU, other students who know me well would describe me as a person who can discuss controversial social issues with civility and respect.

(1=Strongly Disagree; 6=Strongly Agree)

N	Valid	476
	Missing	5
Mean		3.05
Std. Deviation		1.227

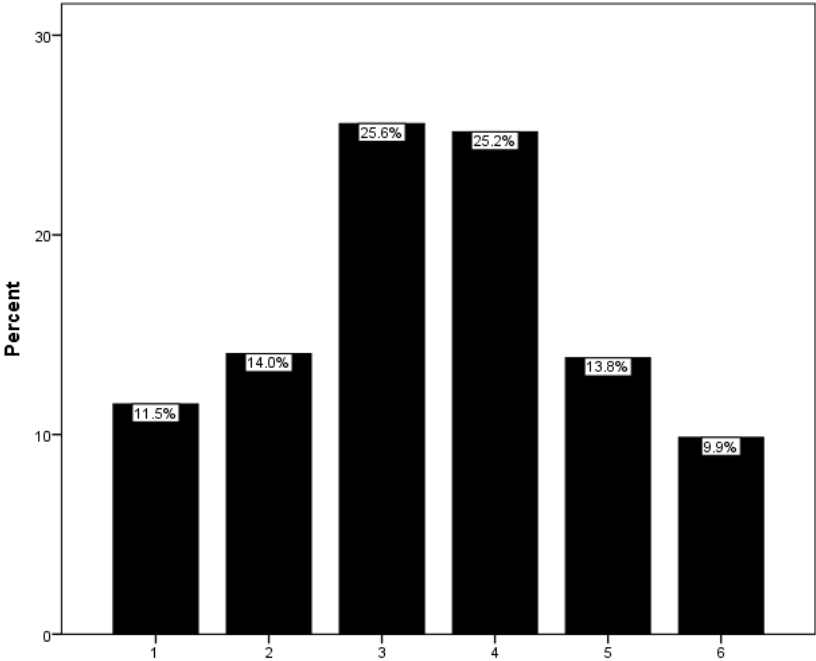
		Frequency	Percent	Valid Percent
Valid	1	53	11.0	11.1
	2	93	19.3	19.5
	3	181	37.6	38.0
	4	95	19.8	20.0
	5	34	7.1	7.1
	6	20	4.2	4.2
	Total	476	99.0	100.0
Missing		5	1.0	
Total		481	100.0	



[CMG3] My experiences at SMSU have prepared me to write a letter to the newspaper or community leaders about a community issue.  
 (1=Strongly Disagree; 6=Strongly Agree)

N	Valid	477
	Missing	4
Mean		3.45
Std. Deviation		1.447

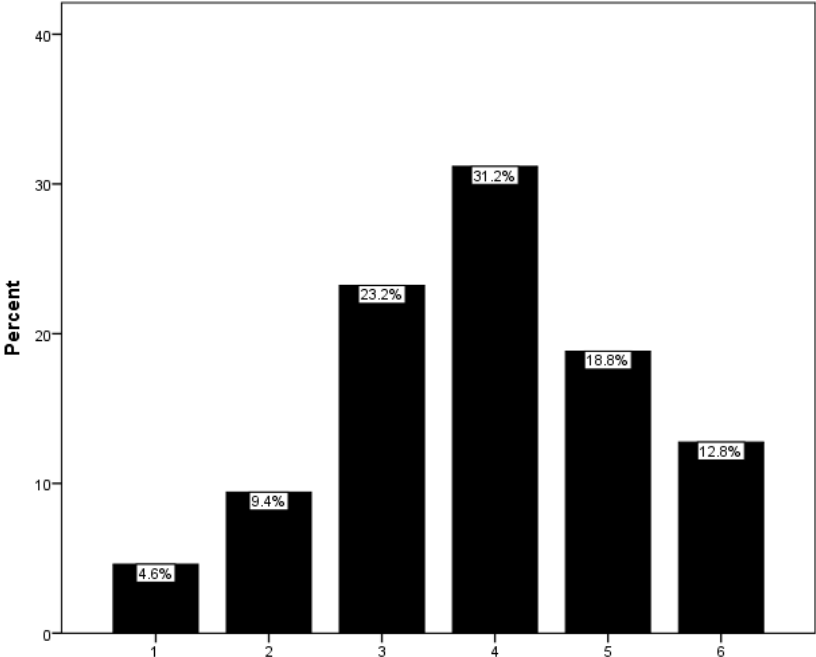
		Frequency	Percent	Valid Percent
Valid	1	55	11.4	11.5
	2	67	13.9	14.0
	3	122	25.4	25.6
	4	120	24.9	25.2
	5	66	13.7	13.8
	6	47	9.8	9.9
	Total	477	99.2	100.0
Missing		4	0.8	
Total		481	100.0	



[CMG4] My SMSU education has given me the professional knowledge and skills that I need to help address community issues.  
 (1=Strongly Disagree; 6=Strongly Agree)

N	Valid	478
	Missing	3
Mean		3.88
Std. Deviation		1.308

		Frequency	Percent	Valid Percent
Valid	1	22	4.6	4.6
	2	45	9.4	9.4
	3	111	23.1	23.2
	4	149	31.0	31.2
	5	90	18.7	18.8
	6	61	12.7	12.8
	Total	478	99.4	100.0
Missing		3	0.6	
Total		481	100.0	

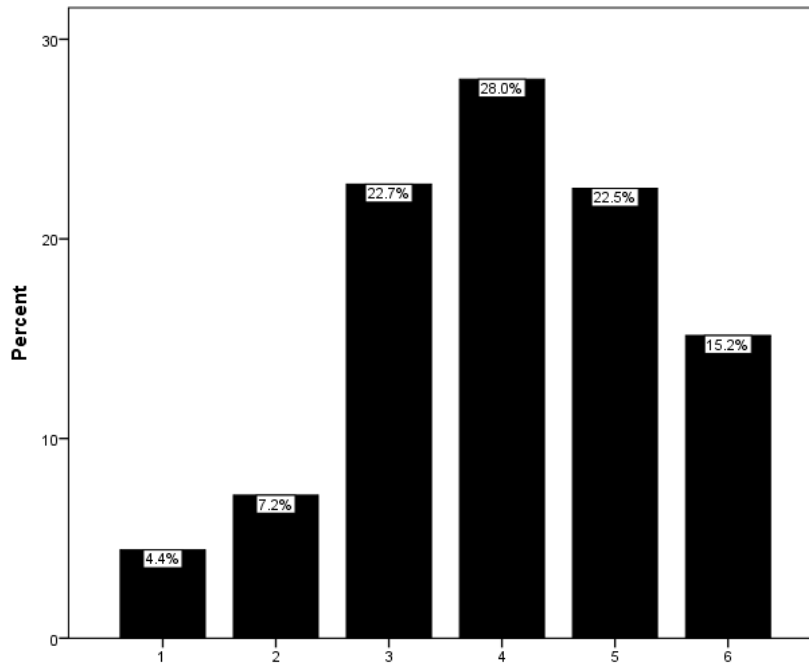


[CMG5] My experiences at SMSU have helped make me a good listener, even when peoples' opinions are different from mine.

(1=Strongly Disagree; 6=Strongly Agree)

N	Valid	475
	Missing	6
Mean		4.03
Std. Deviation		1.321

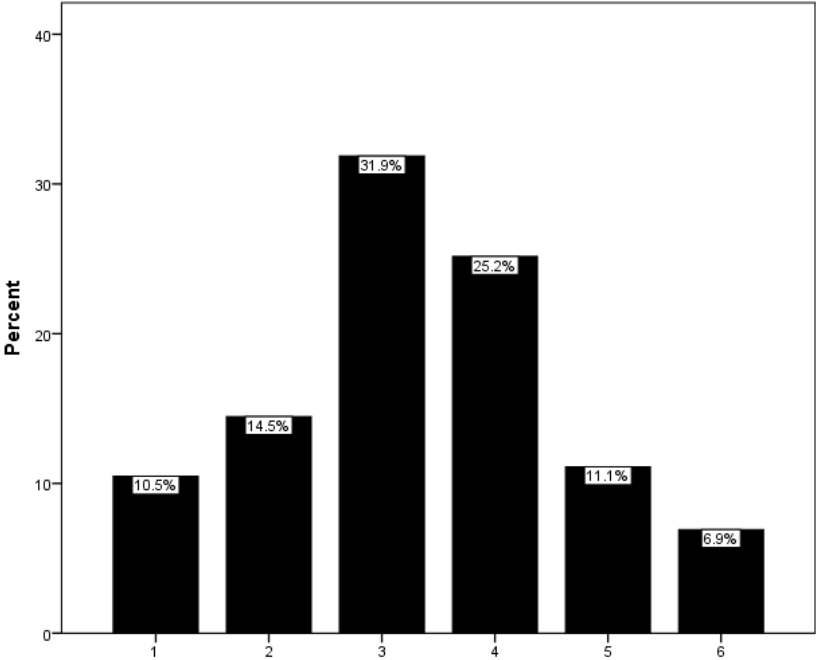
		Frequency	Percent	Valid Percent
Valid	1	21	4.4	4.4
	2	34	7.1	7.2
	3	108	22.5	22.7
	4	133	27.7	28.0
	5	107	22.2	22.5
	6	72	15.0	15.2
	Total	475	98.8	100.0
Missing		6	1.2	
Total		481	100.0	



[CMG6] Based on my experiences at SMSU, I would say that most other students know less about community organizations and volunteer opportunities than I do.  
 (1=Strongly Disagree; 6=Strongly Agree)

N	Valid	477
	Missing	4
Mean		3.33
Std. Deviation		1.334

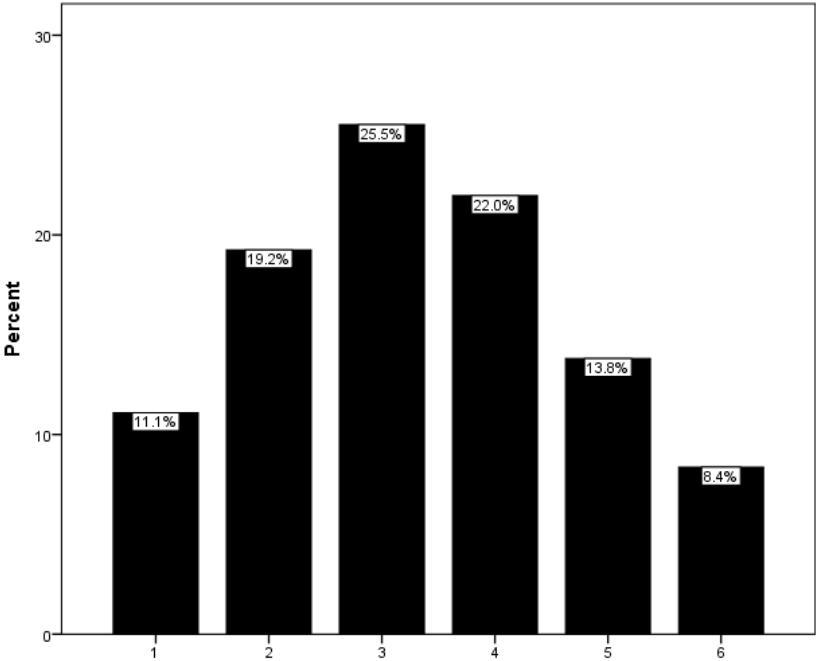
		Frequency	Percent	Valid Percent
Valid	1	50	10.4	10.5
	2	69	14.3	14.5
	3	152	31.6	31.9
	4	120	24.9	25.2
	5	53	11.0	11.1
	6	33	6.9	6.9
	Total	477	99.2	100.0
Missing		4	0.8	
Total		481	100.0	



[CMG7] My experiences at SMSU have helped me realize that it is important for me to vote and be politically involved.  
 (1=Strongly Disagree; 6=Strongly Agree)

N	Valid	478
	Missing	3
Mean		3.33
Std. Deviation		1.433

		Frequency	Percent	Valid Percent
Valid	1	53	11.0	11.1
	2	92	19.1	19.2
	3	122	25.4	25.5
	4	105	21.8	22.0
	5	66	13.7	13.8
	6	40	8.3	8.4
	Total	478	99.4	100.0
Missing		3	0.6	
Total		481	100.0	

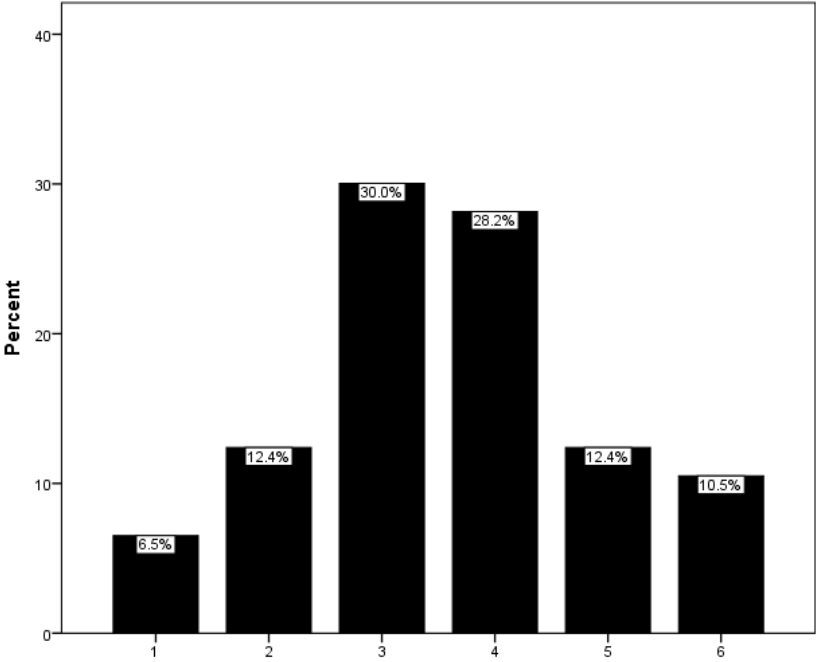




[CMG8] My education at SMSU has increased my confidence that I can contribute to improving life in my community.  
 (1=Strongly Disagree; 6=Strongly Agree)

N	Valid	476
	Missing	5
Mean		3.59
Std. Deviation		1.328

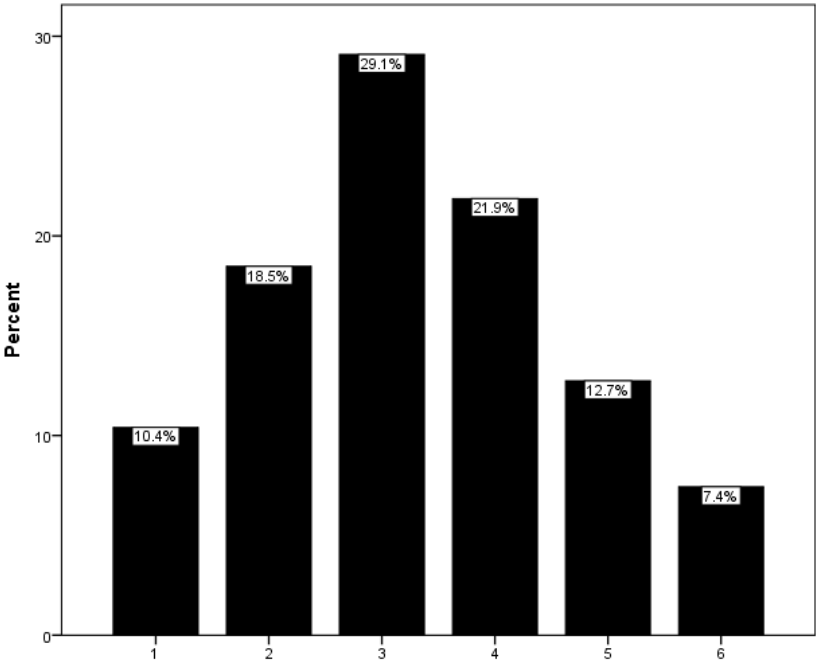
		Frequency	Percent	Valid Percent
Valid	1	31	6.4	6.5
	2	59	12.3	12.4
	3	143	29.7	30.0
	4	134	27.9	28.2
	5	59	12.3	12.4
	6	50	10.4	10.5
	Total	476	99.0	100.0
Missing		5	1.0	
Total		481	100.0	



[CMG9] Because of my SMSU education, I believe that my community is enriched by having some cultural or ethnic diversity.  
 (1=Strongly Disagree; 6=Strongly Agree)

N	Valid	471
	Missing	10
Mean		3.30
Std. Deviation		1.382

		Frequency	Percent	Valid Percent
Valid	1	49	10.2	10.4
	2	87	18.1	18.5
	3	137	28.5	29.1
	4	103	21.4	21.9
	5	60	12.5	12.7
	6	35	7.3	7.4
	Total		471	97.9
Missing		10	2.1	
Total		481	100.0	

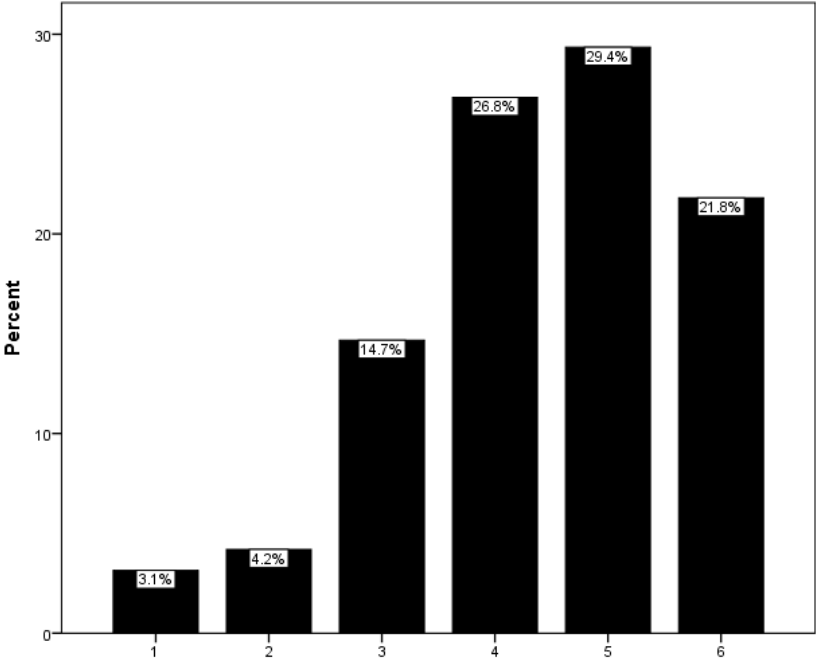


[CMG10] My experiences at SMSU have helped me realize that when members of my group disagree on how to solve a problem, I like to try to build consensus.

(1=Strongly Disagree; 6=Strongly Agree)

N	Valid	477
	Missing	4
Mean		4.40
Std. Deviation		1.266

		Frequency	Percent	Valid Percent
Valid	1	15	3.1	3.1
	2	20	4.2	4.2
	3	70	14.6	14.7
	4	128	26.6	26.8
	5	140	29.1	29.4
	6	104	21.6	21.8
	Total	477	99.2	100.0
Missing		4	0.8	
Total		481	100.0	

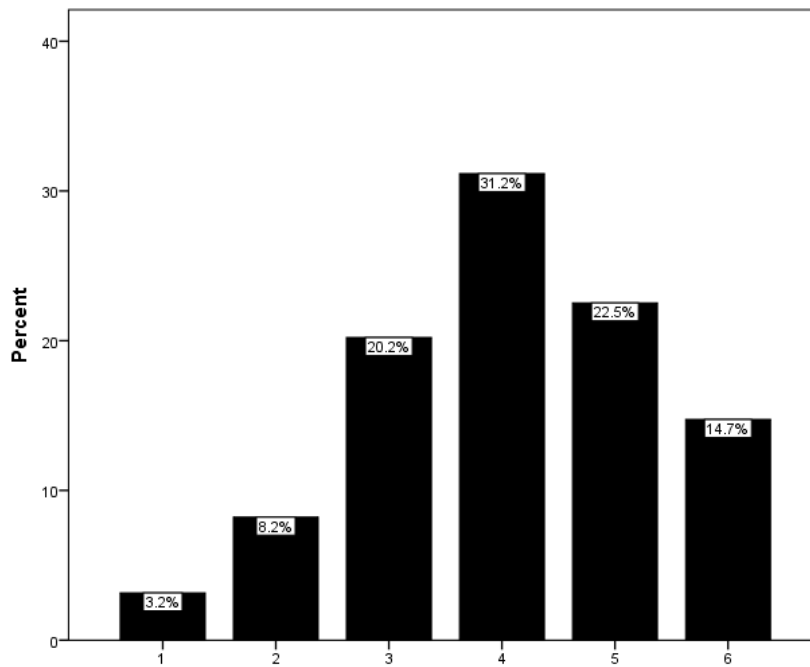


[CMG11] My education at SMSU has made me aware of a number of community issues that need to be addressed.

(1=Strongly Disagree; 6=Strongly Agree)

N	Valid	475
	Missing	6
Mean		4.06
Std. Deviation		1.276

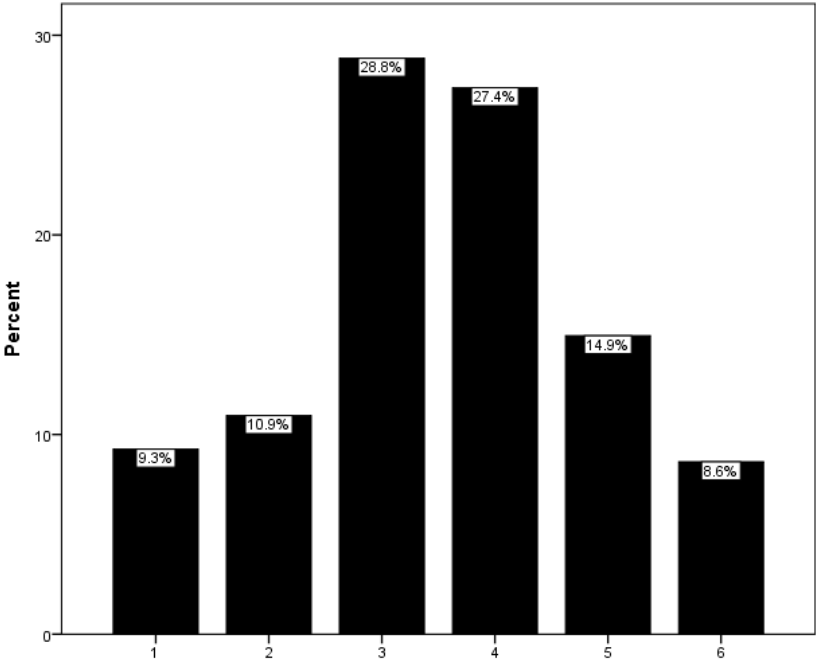
		Frequency	Percent	Valid Percent
Valid	1	15	3.1	3.2
	2	39	8.1	8.2
	3	96	20.0	20.2
	4	148	30.8	31.2
	5	107	22.2	22.5
	6	70	14.6	14.7
	Total	475	98.8	100.0
Missing		6	1.2	
Total		481	100.0	



[CMG12] My experiences at SMSU have increased my motivation to participate in advocacy or political action groups after I graduate.  
 (1=Strongly Disagree; 6=Strongly Agree)

N	Valid	475
	Missing	6
Mean		3.54
Std. Deviation		1.358

		Frequency	Percent	Valid Percent
Valid	1	44	9.1	9.3
	2	52	10.8	10.9
	3	137	28.5	28.8
	4	130	27.0	27.4
	5	71	14.8	14.9
	6	41	8.5	8.6
	Total	475	98.8	100.0
Missing		6	1.2	
Total		481	100.0	

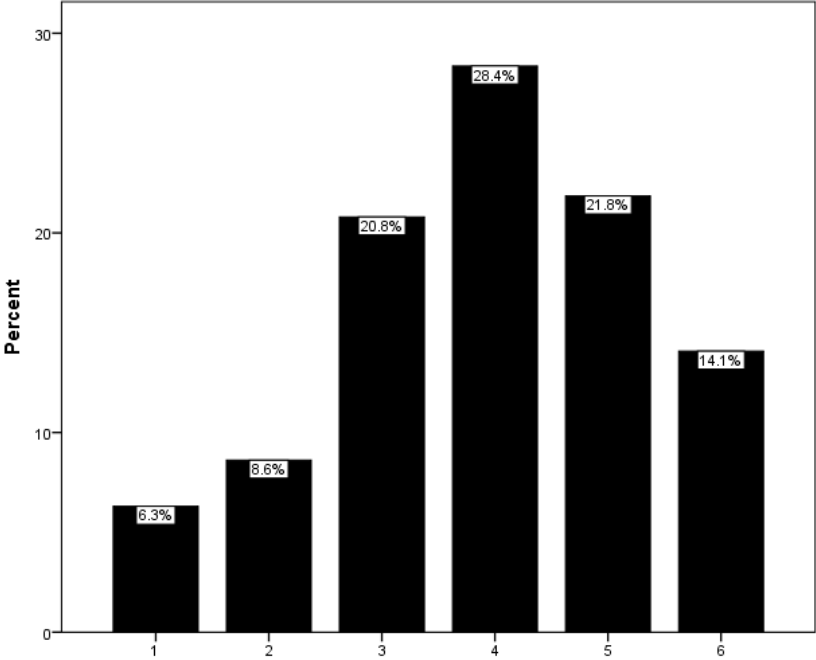


[CMG13] Through my experiences at SMSU, I am very familiar with clubs and organizations that encourage and support community involvement for college students.

(1=Strongly Disagree; 6=Strongly Agree)

N	Valid	476
	Missing	5
Mean		3.93
Std. Deviation		1.379

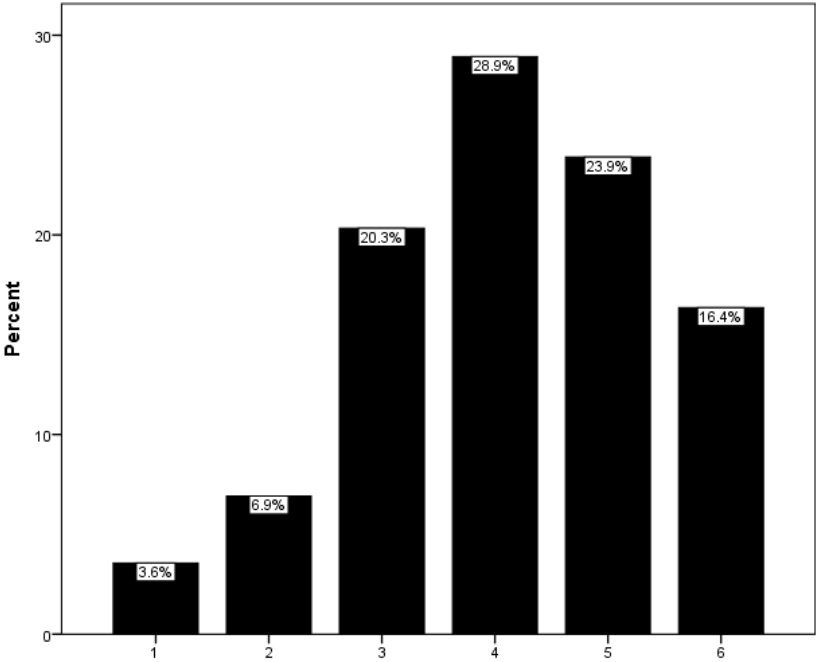
		Frequency	Percent	Valid Percent
Valid	1	30	6.2	6.3
	2	41	8.5	8.6
	3	99	20.6	20.8
	4	135	28.1	28.4
	5	104	21.6	21.8
	6	67	13.9	14.1
	Total	476	99.0	100.0
Missing		5	1.0	
Total		481	100.0	



[CMG14] My SMSU experiences helped me realize that I like to be involved in addressing community issues.  
 (1=Strongly Disagree; 6=Strongly Agree)

N	Valid	477
	Missing	4
Mean		4.12
Std. Deviation		1.298

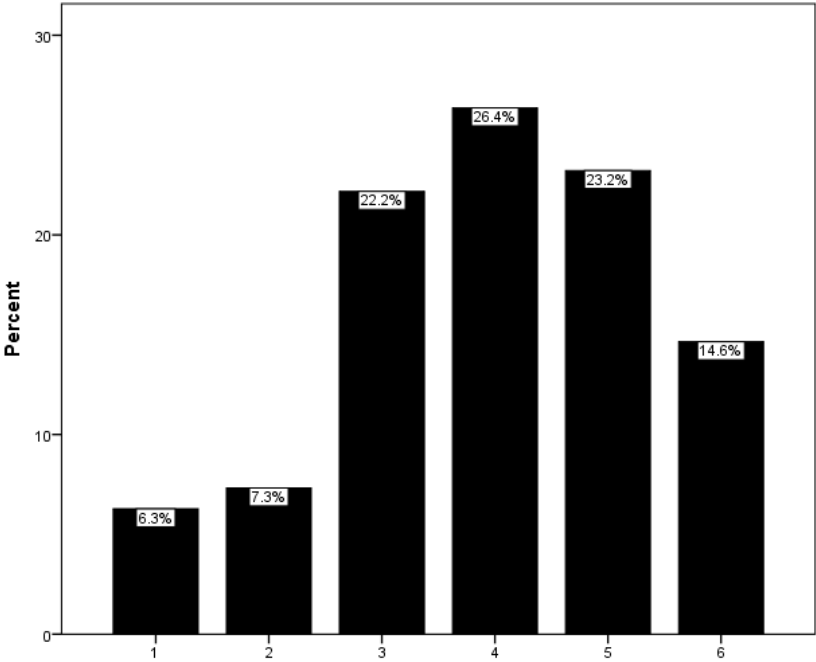
		Frequency	Percent	Valid Percent
Valid	1	17	3.5	3.6
	2	33	6.9	6.9
	3	97	20.2	20.3
	4	138	28.7	28.9
	5	114	23.7	23.9
	6	78	16.2	16.4
	Total	477	99.2	100.0
Missing		4	0.8	
Total		481	100.0	



[CMG15] Because of the experiences at SMSU, I believe that having an impact on community problems is within my reach.  
 (1=Strongly Disagree; 6=Strongly Agree)

N	Valid	478
	Missing	3
Mean		3.97
Std. Deviation		1.379

		Frequency	Percent	Valid Percent
Valid	1	30	6.2	6.3
	2	35	7.3	7.3
	3	106	22.0	22.2
	4	126	26.2	26.4
	5	111	23.1	23.2
	6	70	14.6	14.6
	Total	478	99.4	100.0
Missing		3	0.6	
Total		481	100.0	



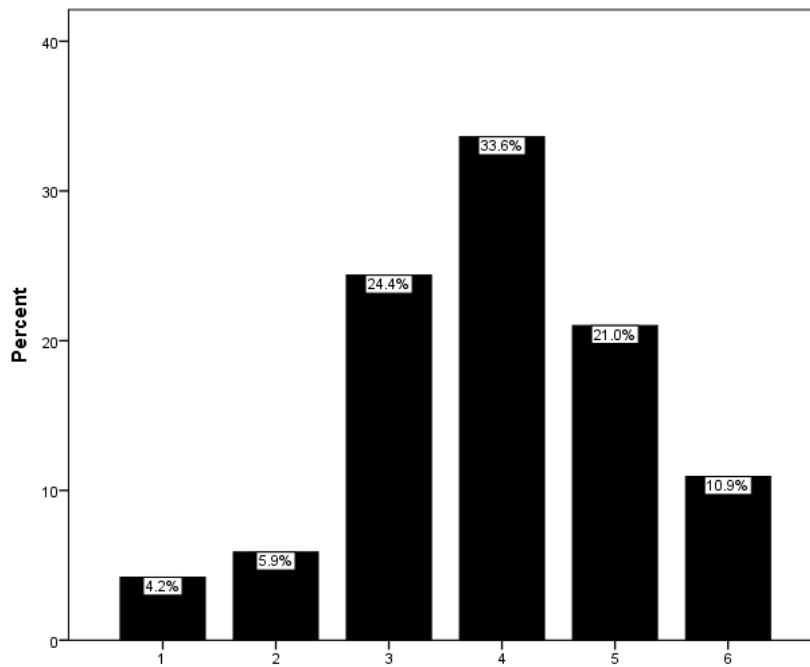


[CMG16] Because of my SMSU experiences, I plan to stay current with the local and national news after I graduate.

(1=Strongly Disagree; 6=Strongly Agree)

N	Valid	476
	Missing	5
Mean		3.94
Std. Deviation		1.226

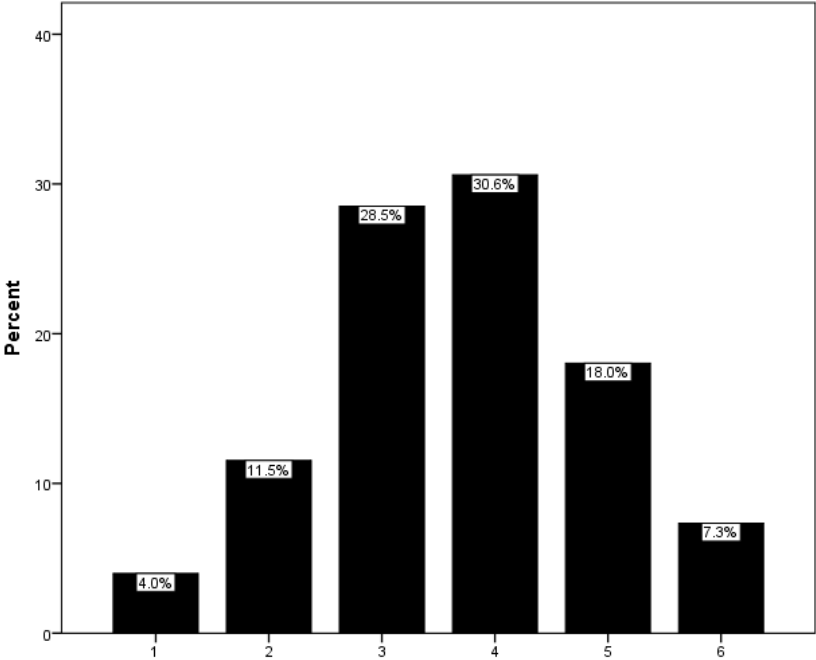
		Frequency	Percent	Valid Percent
Valid	1	20	4.2	4.2
	2	28	5.8	5.9
	3	116	24.1	24.4
	4	160	33.3	33.6
	5	100	20.8	21.0
	6	52	10.8	10.9
	Total	476	99.0	100.0
Missing		5	1.0	
Total		481	100.0	



[CMG17] My experiences at SMSU have enabled me to plan or help implement an initiative that improves the community.  
 (1=Strongly Disagree; 6=Strongly Agree)

N	Valid	477
	Missing	4
Mean		3.69
Std. Deviation		1.219

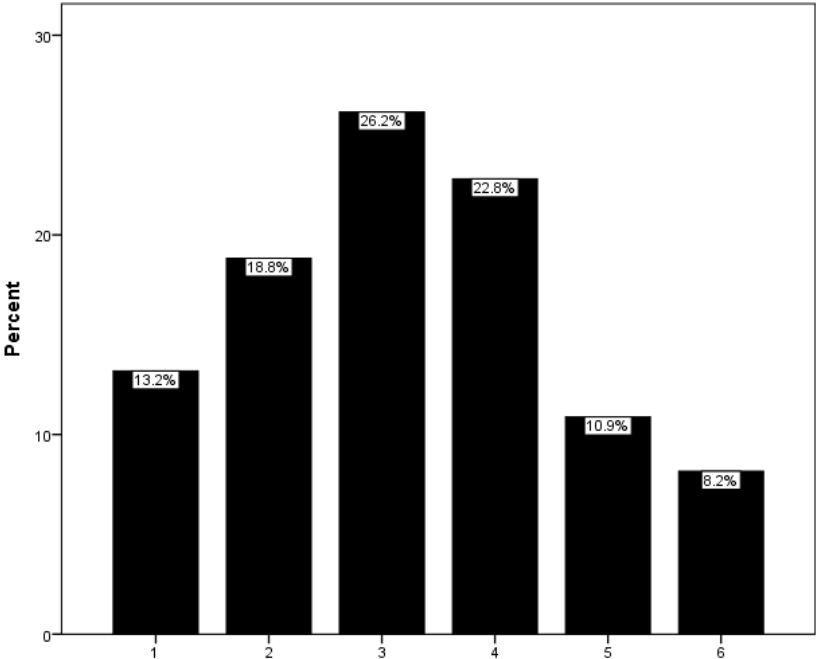
		Frequency	Percent	Valid Percent
Valid	1	19	4.0	4.0
	2	55	11.4	11.5
	3	136	28.3	28.5
	4	146	30.4	30.6
	5	86	17.9	18.0
	6	35	7.3	7.3
	Total	477	99.2	100.0
Missing		4	0.8	
Total		481	100.0	



[CMG18] My experiences at SMSU have helped me realize that I prefer to work in settings in which I interact with people who are very different from me.  
 (1=Strongly Disagree; 6=Strongly Agree)

N	Valid	478
	Missing	3
Mean		3.24
Std. Deviation		1.435

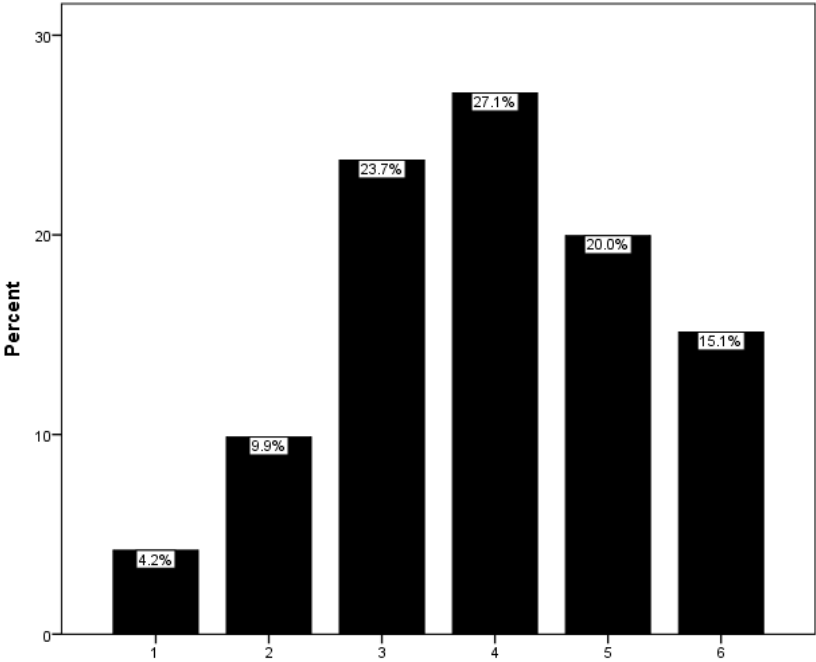
		Frequency	Percent	Valid Percent
Valid	1	63	13.1	13.2
	2	90	18.7	18.8
	3	125	26.0	26.2
	4	109	22.7	22.8
	5	52	10.8	10.9
	6	39	8.1	8.2
	Total	478	99.4	100.0
Missing		3	0.6	
Total		481	100.0	



[CMG19] Because of the experiences I have had at SMSU, I feel a deep conviction in my career goals to achieve purposes beyond my own self-interest.  
 (1=Strongly Disagree; 6=Strongly Agree)

N	Valid	476
	Missing	5
Mean		3.94
Std. Deviation		1.347

		Frequency	Percent	Valid Percent
Valid	1	20	4.2	4.2
	2	47	9.8	9.9
	3	113	23.5	23.7
	4	129	26.8	27.1
	5	95	19.8	20.0
	6	72	15.0	15.1
	Total	476	99.0	100.0
Missing		5	1.0	
Total		481	100.0	

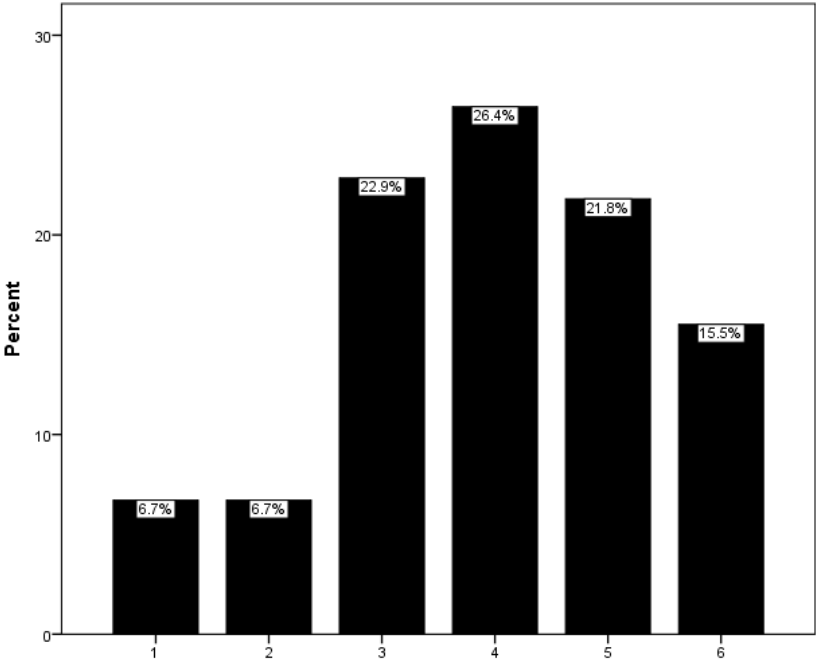


[CMG20] My experiences at SMSU have helped me develop my ability to respond to others with empathy, regardless of their backgrounds.

(1=Strongly Disagree; 6=Strongly Agree)

N	Valid	477
	Missing	4
Mean		3.96
Std. Deviation		1.394

		Frequency	Percent	Valid Percent
Valid	1	32	6.7	6.7
	2	32	6.7	6.7
	3	109	22.7	22.9
	4	126	26.2	26.4
	5	104	21.6	21.8
	6	74	15.4	15.5
	Total	477	99.2	100.0
Missing		4	0.8	
Total		481	100.0	

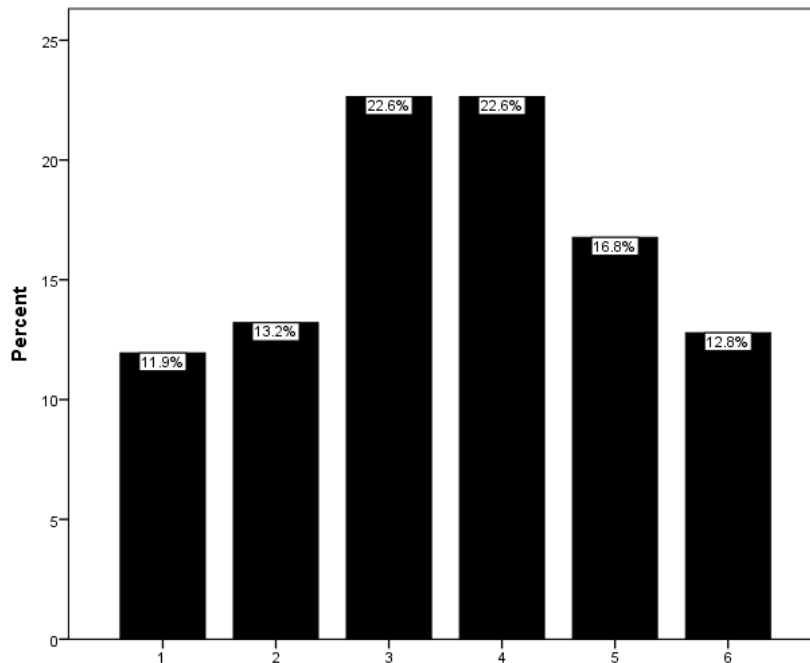


[CMG21] Because of my experiences at SMSU, I intend to be involved in volunteer service after I graduate.

(1=Strongly Disagree; 6=Strongly Agree)

N	Valid	447
	Missing	4
Mean		3.57
Std. Deviation		1.527

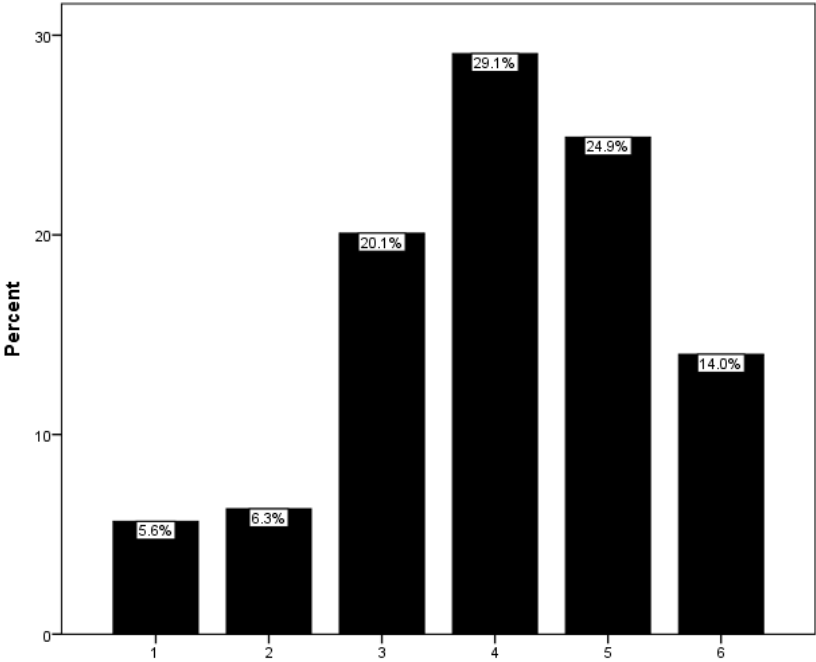
		Frequency	Percent	Valid Percent
Valid	1	57	11.9	11.9
	2	63	13.1	13.2
	3	108	22.5	22.6
	4	108	22.5	22.6
	5	80	16.6	16.8
	6	61	12.7	12.8
	Total	477	99.2	100.0
Missing		4	0.8	
Total		481	100.0	



[CMG22] My education at SMSU has motivated me to stay up to date on the current political issues in the community.  
 (1=Strongly Disagree; 6=Strongly Agree)

N	Valid	478
	Missing	3
Mean		4.03
Std. Deviation		1.331

		Frequency	Percent	Valid Percent
Valid	1	27	5.6	5.6
	2	30	6.2	6.3
	3	96	20.0	20.1
	4	139	28.9	29.1
	5	119	24.7	24.9
	6	67	13.9	14.0
	Total	478	99.4	100.0
Missing		3	0.6	
Total		481	100.0	

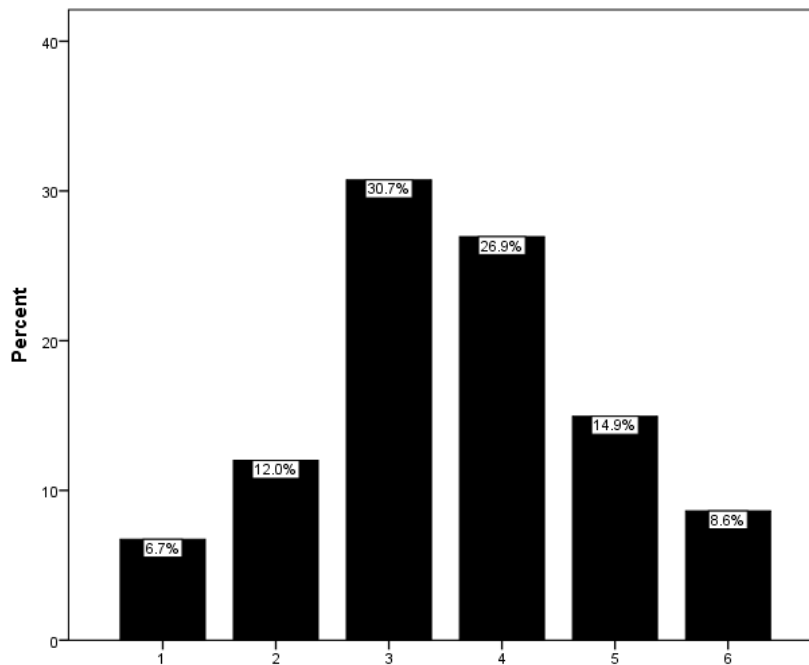


[CMG23] My SMSU education has convinced me that social problems are not too complex for me to help solve.

(1=Strongly Disagree; 6=Strongly Agree)

N	Valid	475
	Missing	6
Mean		3.57
Std. Deviation		1.307

		Frequency	Percent	Valid Percent
Valid	1	32	6.7	6.7
	2	57	11.9	12.0
	3	146	30.4	30.7
	4	128	26.6	26.9
	5	71	14.8	14.9
	6	41	8.5	8.6
	Total	475	98.8	100.0
Missing		6	1.2	
Total		481	100.0	



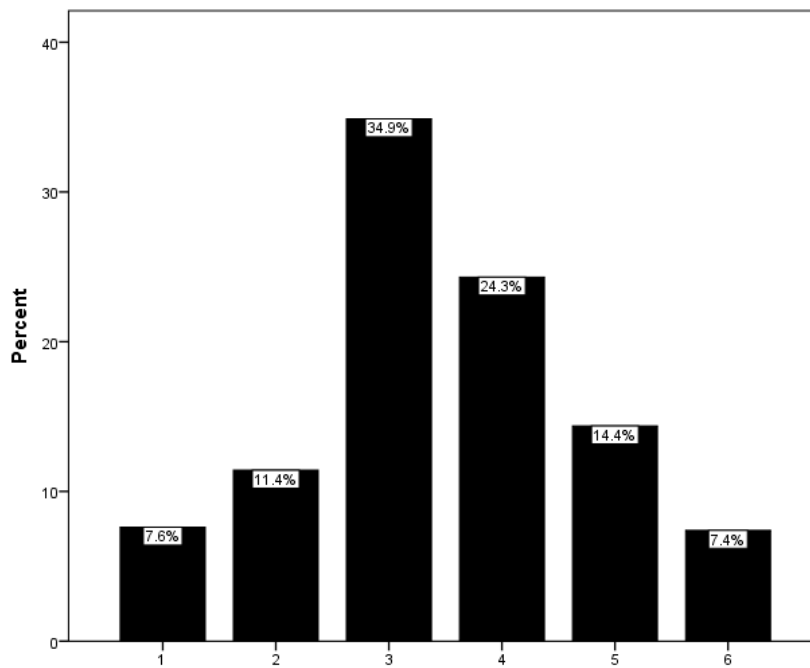


[CMG24] I believe that I have a responsibility to use the knowledge that I have gained at SMSU to serve others.

(1=Strongly Disagree; 6=Strongly Agree)

N	Valid	473
	Missing	8
Mean		3.49
Std. Deviation		1.292

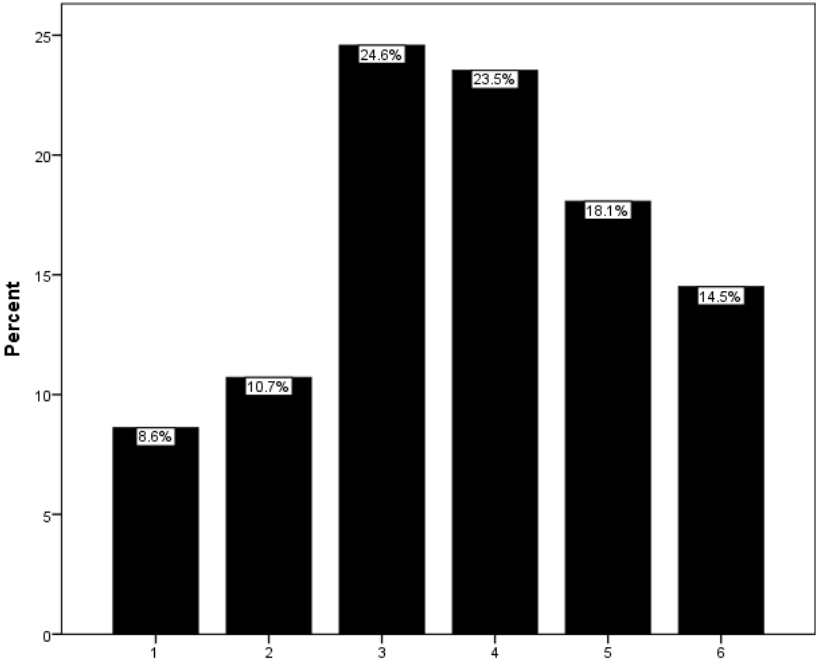
		Frequency	Percent	Valid Percent
Valid	1	36	7.5	7.6
	2	54	11.2	11.4
	3	165	34.3	34.9
	4	115	23.9	24.3
	5	68	14.1	14.4
	6	35	7.3	7.4
	Total	473	98.3	100.0
Missing		8	1.7	
Total		481	100.0	



[CMG25] My SMSU education has prepared me to listen to others and understand their perspective on controversial issues.  
 (1=Strongly Disagree; 6=Strongly Agree)

N	Valid	476
	Missing	5
Mean		3.75
Std. Deviation		1.467

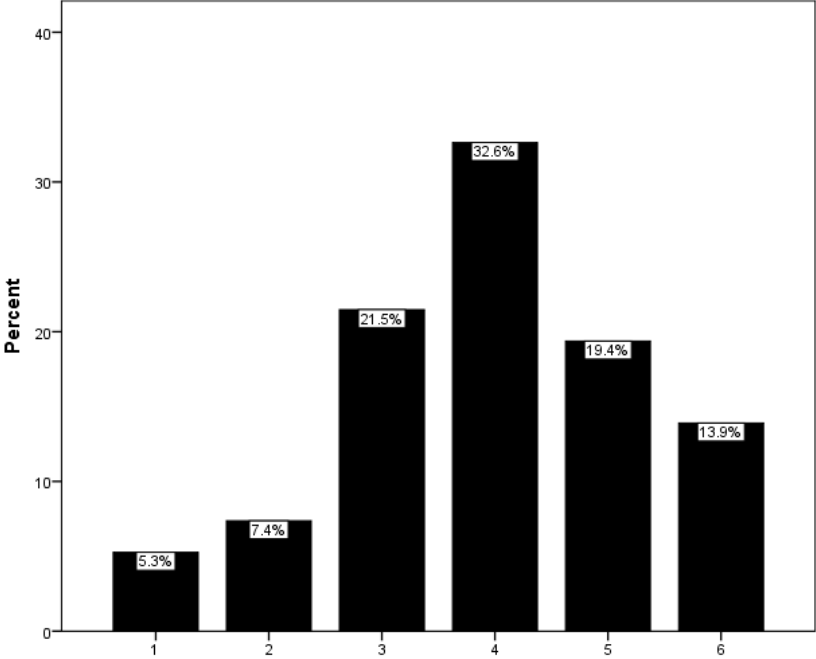
		Frequency	Percent	Valid Percent
Valid	1	41	8.5	8.6
	2	51	10.6	10.7
	3	117	24.3	24.6
	4	112	23.3	23.5
	5	86	17.9	18.1
	6	69	14.3	14.5
	Total	476	99.0	100.0
Missing		5	1.0	
Total		481	100.0	



[CMG26] Based on my experiences at SMSU, I would say that the main purposes of work are to improve society through my career.  
(1=Strongly Disagree; 6=Strongly Agree)

N	Valid	475
	Missing	6
Mean		3.95
Std. Deviation		1.317

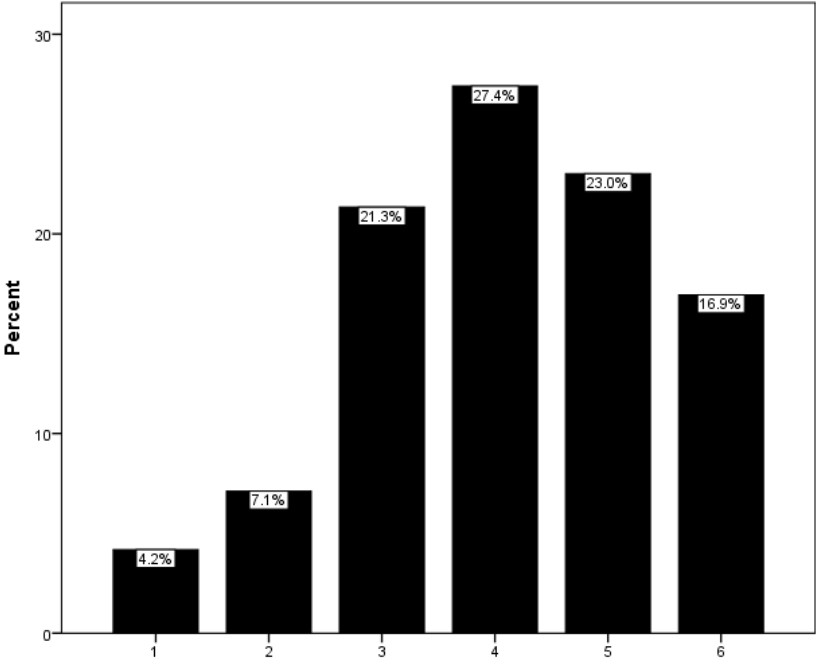
		Frequency	Percent	Valid Percent
Valid	1	25	5.2	5.3
	2	35	7.3	7.4
	3	102	21.2	21.5
	4	155	32.2	32.6
	5	92	19.1	19.4
	6	66	13.7	13.9
	Total	475	98.8	100.0
Missing		6	1.2	
Total		481	100.0	



[CMG27] As a result of my experiences at SMSU, I want to dedicate my career to improving society.  
 (1=Strongly Disagree; 6=Strongly Agree)

N	Valid	478
	Missing	3
Mean		4.09
Std. Deviation		1.334

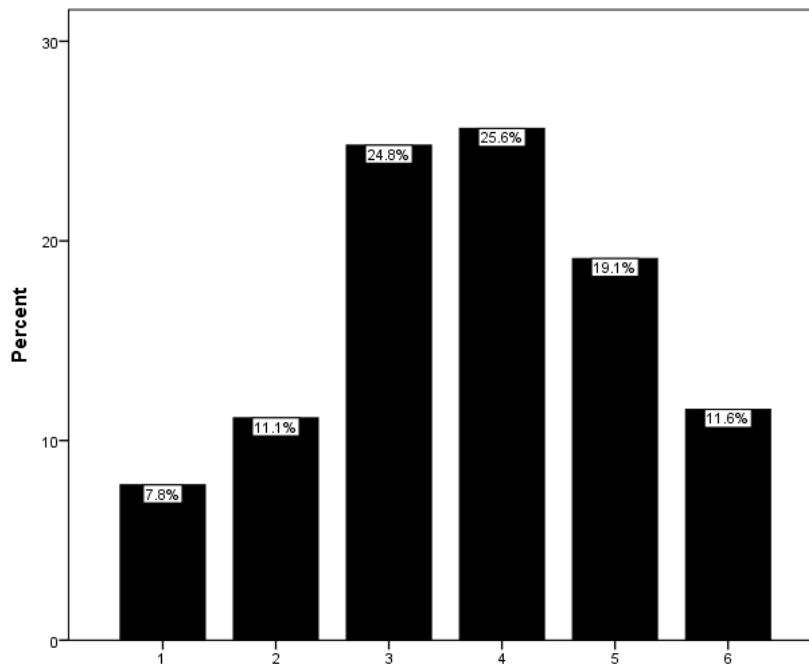
		Frequency	Percent	Valid Percent
Valid	1	20	4.2	4.2
	2	34	7.1	7.1
	3	102	21.2	21.3
	4	131	27.2	27.4
	5	110	22.9	23.0
	6	81	16.8	16.9
	Total	478	99.4	100.0
Missing		3	0.6	
Total		481	100.0	



[CMG28] After being a student at SMSU, I feel confident that I will be able to apply what I have learned in my classes to solve real problems in society.  
 (1=Strongly Disagree; 6=Strongly Agree)

N	Valid	476
	Missing	5
Mean		3.72
Std. Deviation		1.404

		Frequency	Percent	Valid Percent
Valid	1	37	7.7	7.8
	2	53	11.0	11.1
	3	118	24.5	24.8
	4	122	25.4	25.6
	5	91	18.9	19.1
	6	55	11.4	11.6
	Total	476	99.0	100.0
Missing		5	1.0	
Total		481	100.0	

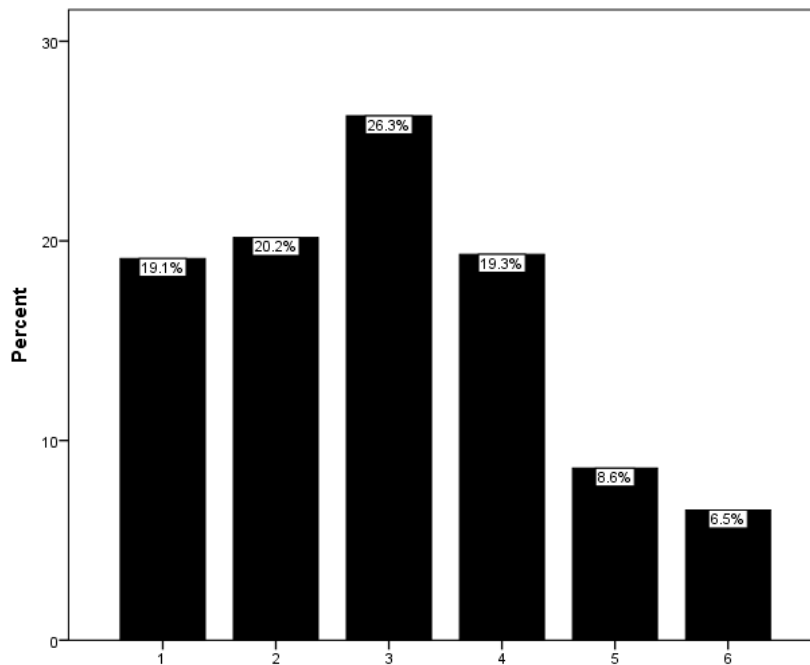


[CMG29] When discussing controversial social issues during my time at SMSU, I have often been able to persuade others to agree with my point of view.

(1=Strongly Disagree; 6=Strongly Agree)

N	Valid	476
	Missing	5
Mean		2.98
Std. Deviation		1.447

		Frequency	Percent	Valid Percent
Valid	1	91	18.9	19.1
	2	96	20.0	20.2
	3	125	26.0	26.3
	4	92	19.1	19.3
	5	41	8.5	8.6
	6	31	6.4	6.5
	Total	476	99.0	100.0
Missing		5	1.0	
Total		481	100.0	

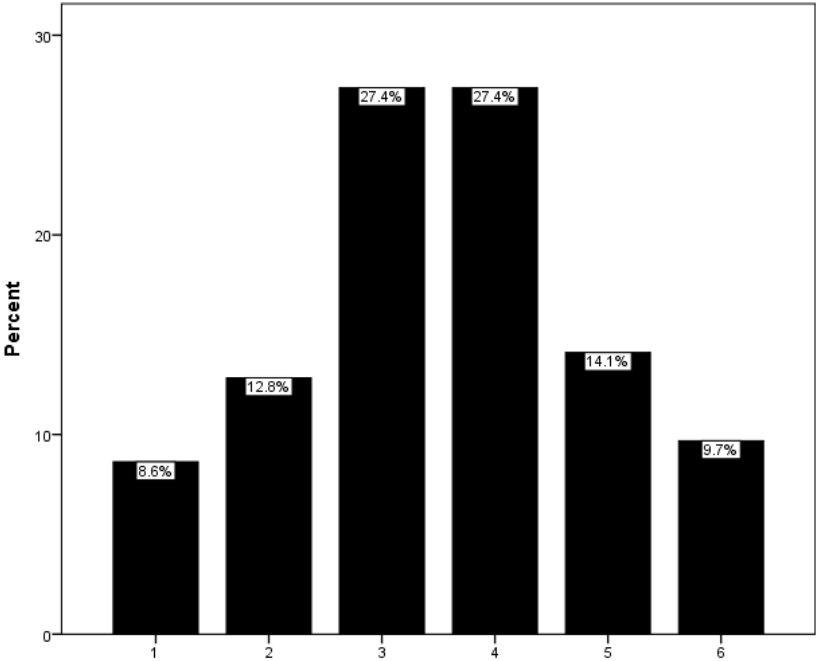


[CMG30] My SMSU experiences have helped me develop a sense of who I am, which now includes a sincere desire to be of service to others.

(1=Strongly Disagree; 6=Strongly Agree)

N	Valid	475
	Missing	6
Mean		3.55
Std. Deviation		1.375

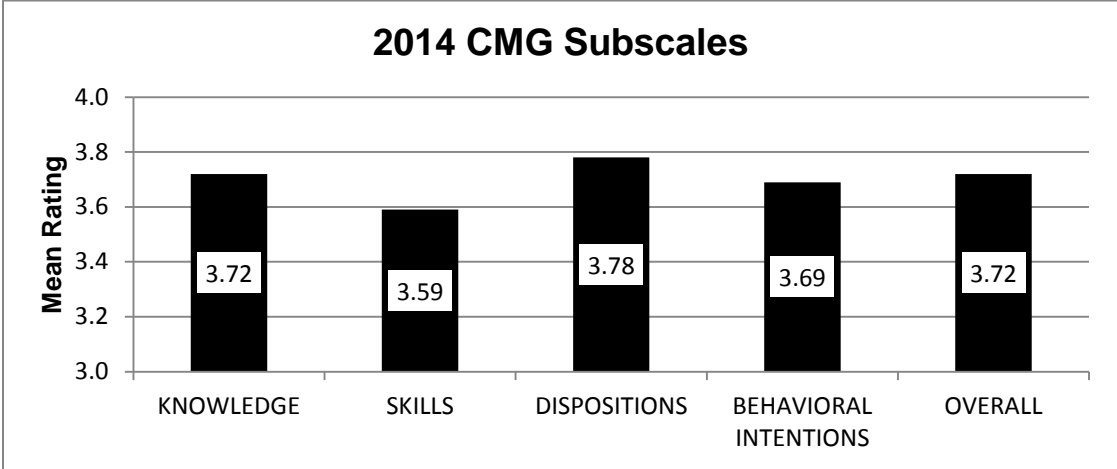
		Frequency	Percent	Valid Percent
Valid	1	41	8.5	8.6
	2	61	12.7	12.8
	3	130	27.0	27.4
	4	130	27.0	27.4
	5	67	13.9	14.1
	6	46	9.6	9.7
	Total	475	98.8	100.0
Missing		6	1.2	
Total		481	100.0	



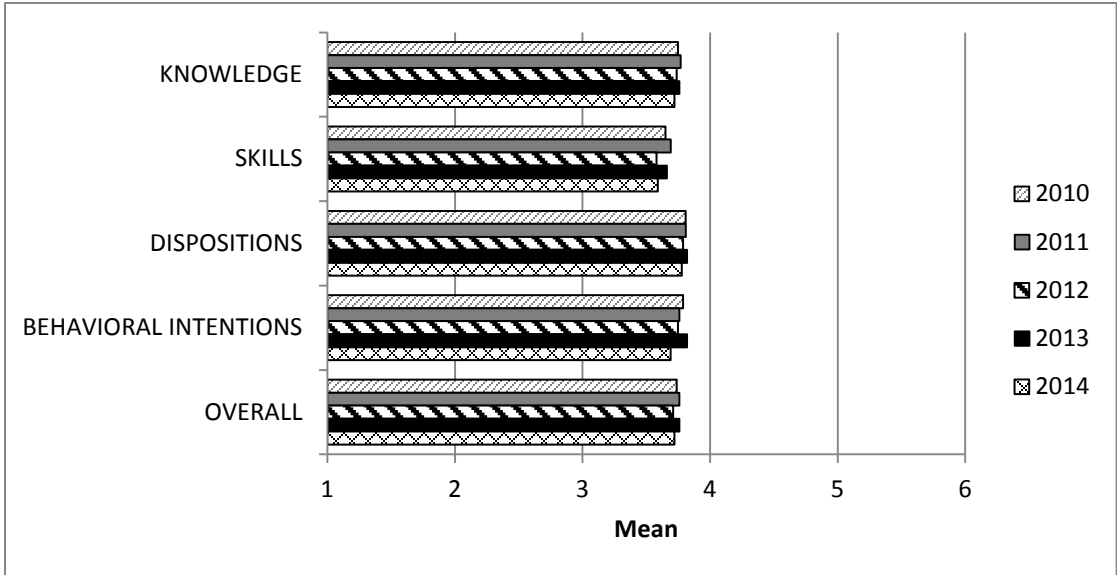
# CMG Subscale Scores

## Summary of Ratings and Trend Analysis

(1=Strongly Disagree; 6=Strongly Agree)



Subscale	2010	2011	2012	2013	2014
KNOWLEDGE	3.75	3.77	3.74	3.76	3.72
SKILLS	3.65	3.69	3.58	3.66	3.59
DISPOSITIONS	3.81	3.81	3.79	3.82	3.78
BEHAVIORAL INTENTIONS	3.79	3.76	3.75	3.82	3.69
OVERALL	3.74	3.76	3.71	3.76	3.72



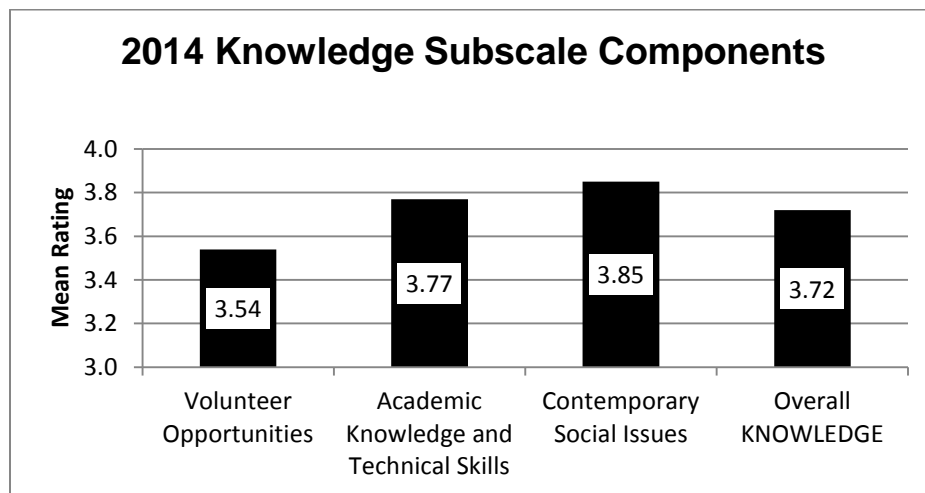
Components for each subscale are presented on subsequent pages. The Behavioral Intentions subscale has no components.



## 2014 Knowledge Subscale

(1=Strongly Disagree; 6=Strongly Agree)

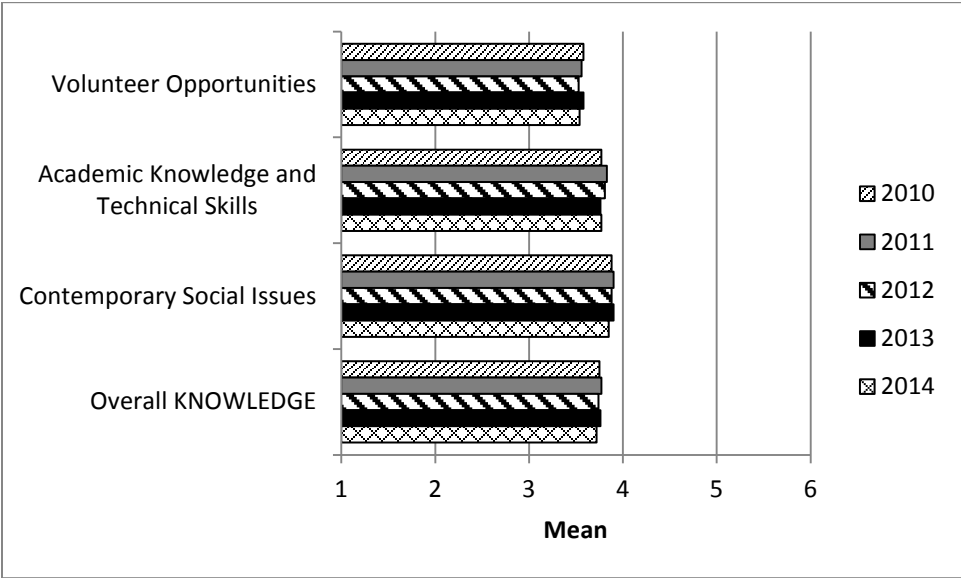
Survey Item	Mean
<b>Volunteer Opportunities</b>	
[CMG1] My experiences at SMSU have helped me know a lot about opportunities to become involved in the community.	3.35
[CMG6] Based on my experience at SMSU, I would say that most other students know less about community organizations and volunteer opportunities than I do.	3.33
[CMG13] Through my experiences at SMSU, I am very familiar with clubs and organizations that encourage and support community involvement for college students.	3.93
<b>Academic Knowledge and Technical Skills</b>	
[CMG4] My SMSU education has given me the professional knowledge and skills that I need to help address community issues.	3.88
[CMG17] My experiences at SMSU have enabled me to plan or help implement an initiative that improves the community.	3.69
[CMG28] After being a student at SMSU, I feel confident that I will be able to apply what I have learned in my classes to solve real problems in society.	3.72
<b>Contemporary Social Issues</b>	
[CMG3] My experiences at SMSU have prepared me to write a letter to the newspaper or community leaders about a community issue.	3.45
[CMG11] My education at SMSU has made me aware of a number of community issues that need to be addressed.	4.06
[CMG22] My education at SMSU has motivated me to stay up to date on the current political issues in the community	4.03



# Knowledge Subscale Trend Analysis

(1=Strongly Disagree; 6=Strongly Agree)

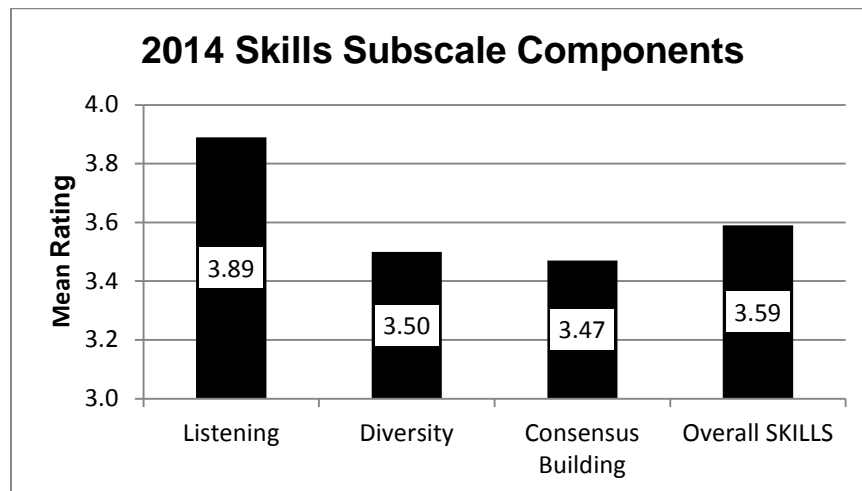
Subscale Components	2010	2011	2012	2013	2014
Volunteer Opportunities	3.58	3.56	3.53	3.58	3.54
Academic Knowledge and Technical Skills	3.77	3.83	3.81	3.76	3.77
Contemporary Social Issues	3.88	3.90	3.88	3.90	3.85
Overall KNOWLEDGE	3.75	3.77	3.74	3.76	3.72



## 2014 Skills Subscale

(1=Strongly Disagree; 6=Strongly Agree)

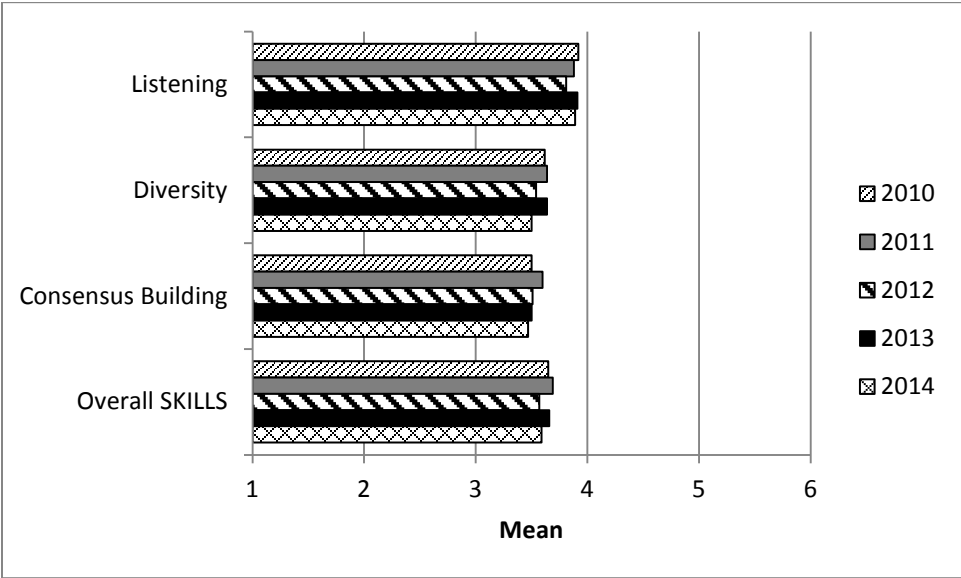
Survey Item	Mean
<b>Listening</b>	
[CMG5] My experiences at SMSU have helped make me a good listener, even when peoples' opinions are different from mine.	4.03
[CMG25] My SMSU education has prepared me to listen to others and understand their perspective on controversial issues.	3.75
<b>Diversity</b>	
[CMG9] My SMSU education has helped me appreciate how my community is enriched by having some cultural or ethnic diversity.	3.30
[CMG18] My experiences at SMSU have helped me realize that I prefer to work in settings in which I interact with people who are different from me.	3.24
[CMG20] My experiences at SMSU have helped me develop my ability to respond to others with empathy, regardless of their backgrounds.	3.96
<b>Consensus Building</b>	
[CMG2] As a result of my experiences at SMSU, other students who know me well would describe me as a person who can discuss controversial social issues with civility and respect.	3.05
[CMG10] My experiences at SMSU have helped me realize that when members of my group disagree on how to solve a problem, I like to try to build consensus.	4.40
[CMG29] When discussing controversial social issues at SMSU, I have often been able to persuade others to agree with my point of view.	2.98



### Skills Subscale Trend Analysis

(1=Strongly Disagree; 6=Strongly Agree)

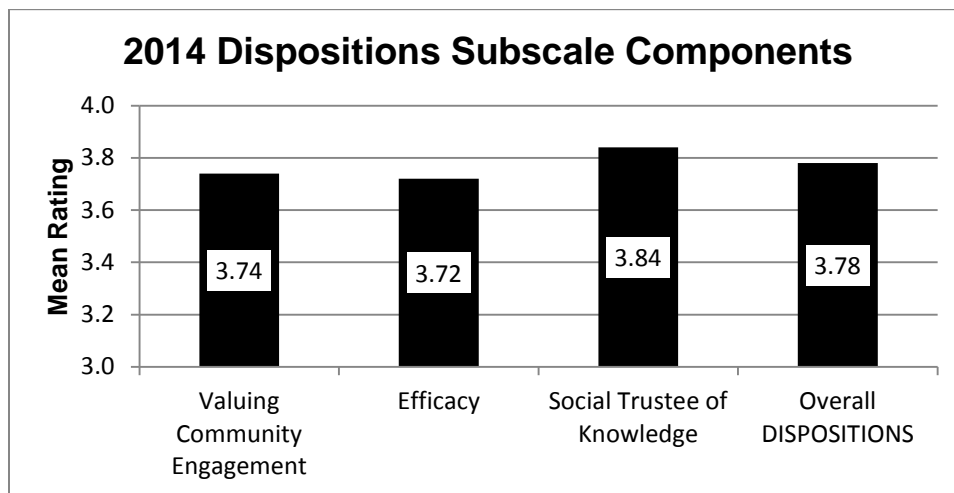
Subscale Components	2010	2011	2012	2013	2014
Listening	3.92	3.88	3.81	3.91	3.89
Diversity	3.62	3.64	3.54	3.64	3.50
Consensus Building	3.50	3.60	3.51	3.50	3.47
Overall SKILLS	3.65	3.69	3.57	3.66	3.59



## 2014 Dispositions Subscale

(1=Strongly Disagree; 6=Strongly Agree)

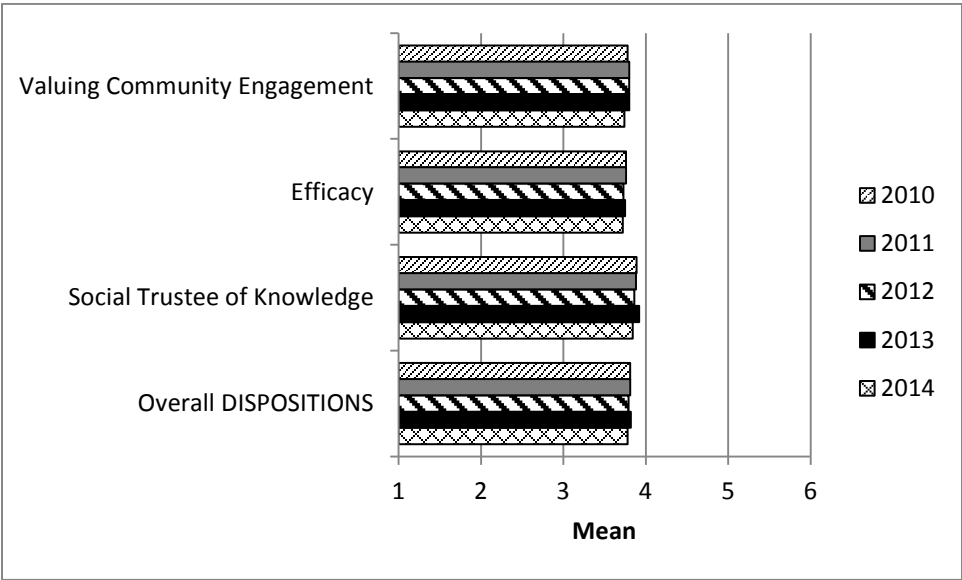
Survey Item	Mean
<b>Valuing Community Engagement</b>	
[CMG7] My experiences at SMSU have helped me realize that it is important for me to vote and be politically involved.	3.33
[CMG14] My SMSU experiences helped me to realize that I like to be involved in addressing community issues.	4.12
[CMG26] Based on my experiences at SMSU, I would say that the main purposes of work are to improve society through my career.	3.95
[CMG30] My SMSU experiences have helped me develop my sense of who I am, which now includes a sincere desire to be of service to others.	3.55
<b>Efficacy</b>	
[CMG8] My education at SMSU has increased my confidence that I can contribute to improving life in my community.	3.59
[CMG15] Because of my experiences at SMSU, I believe that having an impact on community problems is within my reach.	3.97
[CMG23] My SMSU education has convinced me that social problems are <u>not</u> too complex for me to help solve.	3.57
<b>Social Trustee of Knowledge</b>	
[CMG19] Because of the experiences I had at SMSU, I feel a deep conviction in my career goals to achieve purposes that are beyond my own self-interest.	3.94
[CMG24] I believe that I have a responsibility to use the knowledge I have gained at SMSU to serve others.	3.49
[CMG27] As a result of my experiences at SMSU, I want to dedicate my career to improving society.	4.09



## Dispositions Subscale Trend Analysis

(1=Strongly Disagree; 6=Strongly Agree)

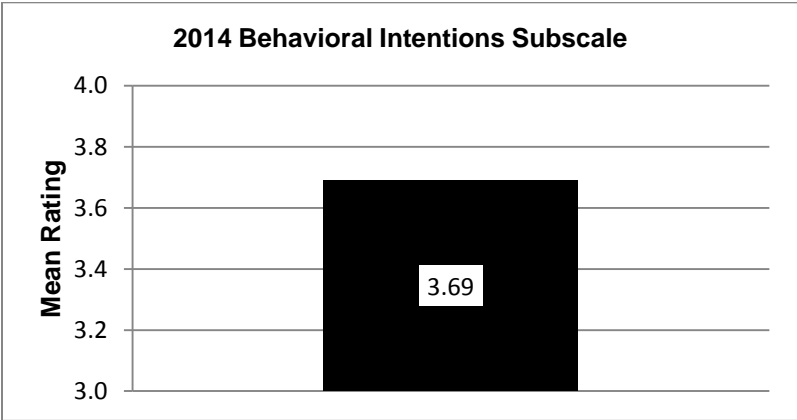
Subscale Components	2010	2011	2012	2013	2014
Valuing Community Engagement	3.78	3.80	3.80	3.80	3.74
Efficacy	3.76	3.76	3.73	3.75	3.72
Social Trustee of Knowledge	3.89	3.88	3.86	3.92	3.84
<b>Overall DISPOSITIONS</b>	<b>3.81</b>	<b>3.81</b>	<b>3.79</b>	<b>3.82</b>	<b>3.78</b>



## 2014 Behavioral Intentions Subscale

(1=Strongly Disagree; 6=Strongly Agree)

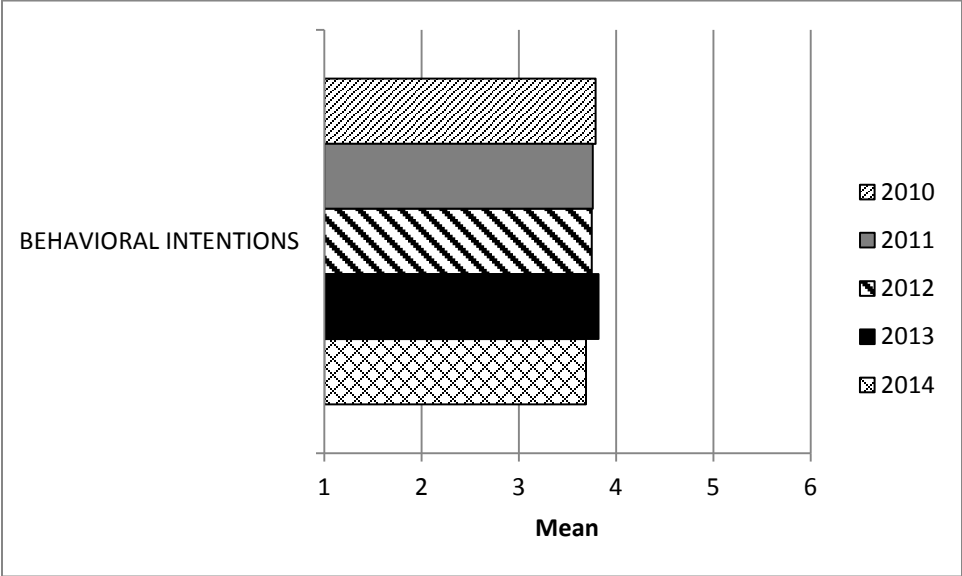
Survey Item	Mean
[CMG12] My experiences at SMSU have increased my motivation to participate in advocacy or political action groups after I graduate.	3.54
[CMG16] Because of my SMSU experiences, I plan to stay current with the local and national news after I graduate.	3.94
[CMG21] Because of my experiences at SMSU, I intend to be involved in volunteer service after I graduate.	3.57



# Behavioral Intentions Subscale Trend Analysis

(1=Strongly Disagree; 6=Strongly Agree)

Subscale	2010	2011	2012	2013	2014
BEHAVIORAL INTENTIONS	3.79	3.76	3.75	3.82	3.69





## Section IV: Responsibility and Commitment

Section IV of the Civic Engagement Survey consisted of a single scale item and an open-ended prompt regarding students' feelings of responsibility and commitment to engage in civic engagement after leaving SMSU.

The scale item in this section of the survey was preceded by the following prompt:

**Please indicate whether you agree or disagree with the following. 1= Strongly Disagree 6= Strongly Agree**

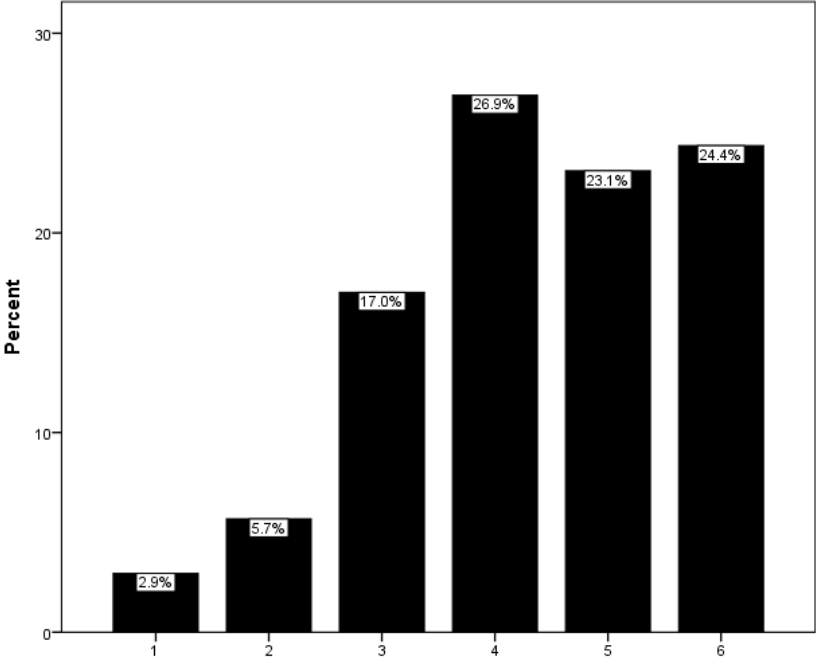
An additional prompt was included at the end of the survey to allow students to make additional comments.

Data for the scale item are presented here along with a trend analysis covering the last four academic years.

I have the responsibility and commitment to use the knowledge and skills I have gained through my education to collaborate with others to improve society.  
 (1=Strongly Disagree; 6=Strongly Agree)

N	Valid	476
	Missing	5
Mean		4.35
Std. Deviation		1.323

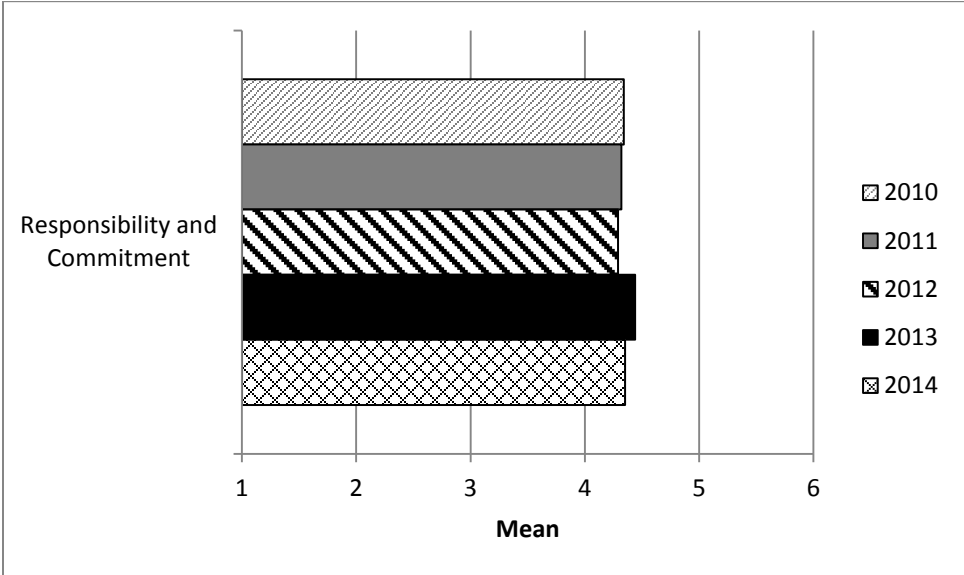
		Frequency	Percent	Valid Percent
Valid	1	14	2.9	2.9
	2	27	5.6	5.7
	3	81	16.8	17.0
	4	128	26.6	26.9
	5	110	22.9	23.1
	6	116	24.1	24.4
	Total	476	99.0	100.0
Missing		5	1.0	
Total		481	100.0	



# Responsibility and Commitment Trend Analysis

(1=Strongly Disagree; 6=Strongly Agree)

	2010	2011	2012	2013	2014
Mean	4.34	4.32	4.29	4.44	4.35



Please describe the ways in which you agree or disagree with this statement and provide a clear explanation of your opinions.

<b>Participant Responses</b>
A person with the ability of improving society should do so.
A quote I like to live by is, "To whom much is given, much is required." This quote definitely applies to this situation. It would be a great injustice and misuse of my education to not use it to better others. I agree because through an education I am given the power to influence others and in such ways I hope to encourage a love for learning and service.
Above all else, I believe I have gained the confidence to work well with others and state my opinion. I also learned to accept the points of others and communicate the advantages and disadvantages of different options.
Access to high education is not something that all individuals have. Since I was fortunate enough to have this access I feel as though it is partly my responsibility to do something with that education. Especially with my <b>DELETED</b> degree I feel like my college education has taught me how to analyze my society and come up with ways that the society can be improved. There are certain things that we as individuals are capable of helping with and there are things that we are not. It is our responsibility as citizens to help with the things that we are able to help with.
After my time at SMSU I feel a strong sense of motivation to provide help to my community. As my education has molded me into a leader I want to be able to inspire others to do the same. By encouraging others to obtain goals even if they seem too far in the distance. In attempting we may not get it all done, but we can knock some of the steps out of the way so others have the possibility to achieve these objectives in the future.
As a <b>DELETED</b> major, I would like to work in a laboratory setting, perhaps testing water quality or food quality or even medicine. I want to help make a healthier and safer place for society. Granted, how far should I go? As in the case of medicine, how potent do we make our painkillers? What happens when we become resistant? Yes, I want to help but I also need to understand when to stop.
As a future educator I will work with the next generation of people who will live and be a part of society to make a generation of people who can live and help make the world into a better place.
As a future educator, I plan to teach children not what to think, but how to think, as well as how to be real-world ready with both academic skills and knowledge and life skills and knowledge. Children truly are our future and by teaching, I will impact and hopefully better society.
As a member of society, and as an empathic and caring person, I believe that it is everyone's responsibility to work towards a common goal of improving society. I am naturally a good listener, and my education at SMSU and employment experience has helped me to constructively debate topics, utilize my skills, and communicate effectively.
As a non-traditional student, SMSU did nothing to mold me into a person who cares about the community. I already have my own fully developed moral compass and sense of right and wrong. It should not be the function of SMSU to teach students what is morally correct. They are here to get an education.
As a <b>DELETED</b> major we are there to help make the lives of the people we are helping better and SMSU has prepared me to do so and taught me skills in which to do so, in order to help improve society.
As a social worker, that is my job. I want to help others and by doing that I will be using the education that I was given at SMSU.
As a teacher, it will be my job to improve the lives of my students and their families.

Participant Responses
As an educator, I will be shaping the leaders of the world. I developed the skills I will need to be an effective teacher through my experiences and training at SMSU. Shaping strong, healthy, well informed world leaders will improve society.
As of currently I am looking for a career in HR where I will hopefully be able to help those who need help in the business setting that I will work at.
As part of a society, I want to contribute to help make the society better.
Because the world is full of problems. You can either fix them, or be one of them. I choose to fix them.
Being a part of society it is important to collaborate with others for improvement. Those with the skills and knowledge should be active in making the world a better place to live.
Being a <b>DELETED</b> major with a minor in <b>DELETED</b> , I have gained a strong sense of commitment to improve society. The majority of courses I have taken within my undergrad experience have opened my eyes to just how passionate I am to want to help others. Through my education and what I have learned in the last four years, I am confident that SMSU has prepared me to do just that!
Being a university athlete and student has prepared me in many ways because of the responsibility I have had to gain. Not only has it taught me responsibility but also how to communicate effectively with others around me.
Being educated gives you the opportunity to better not only your own life, but that of those around you as well. It gives you the power to unlock a lot of doors.
By being somewhat actively involved and finding different organizations that help various people.
By thinking out of the box and using my knowledge to better improve society.
Classes that have helped with my view of society include my First Year Seminar class on the <b>DELETED</b> , as well as <b>DELETED</b> , and many of my <b>DELETED</b> classes.
Collaboration is important; no single person can do it alone. I think everyone with an education should strive to make society better.
Due to previous life experiences and involvement in my community, I cannot entirely say my education at SMSU has formed the foundation of my involvement in society. I grew up as an avid member of <b>DELETED</b> , and my mother had a major impact in my early understanding of easing the suffering of others. However, my education at SMSU has assisted in further development of my communication skills as well as meaningful self-monitoring and listening, all of which are important to assisting community and corporate through career.
During my <b>DELETED</b> courses I have learned that education is the most important aspect of society and by being educated we can grow as a society for the better.
Everyone has a voice; it should be used to be an advocate for one's self and for others. I have learned this with my education and experiences.
Everyone should be dedicated to improving the society they live in. Higher education pushes students to learn to work in groups, with people they may not get along with, to achieve a common goal. That is what life is like after college. At your job and in your community you need to work together to accomplish things.
Everyone who lives on earth should hold the responsibility to improve society through what they know.
Getting knowledge or being graduated is the main purpose for me to use my knowledge in real life.
Having such a great education, it is imperative for us to use what we have to make the world better in whatever occupations we pursue.
I agree.
I agree because I believe employers and customers are going to expect that in my future place of work. I want to be able to do my best. My best is all I can give to improve society.
I agree because it is a responsibility but it isn't because of SMSU. Society can only become better if everyone works for it and those who aren't informed need to become informed.

Participant Responses
I agree because it will be my job to help people live a happier, healthier life.
I agree because it's an honor to have the opportunity to receive advanced knowledge from an institute. It is important to use the knowledge that was gained and give back to the world.
I agree because through learning I have become a better person and more aware of what is going on around me.
I agree somewhat that I have the knowledge and skills to collaborating with others to improve society. The reason for this is because our society keeps changing, and with future generations help, we could improve society.
I agree that a responsible citizen that all social unjust issues are the citizens responsibility to push for a change.
I agree that I can use the knowledge that I have gained to make improvements on society. As a teacher, I will be educating children as they enter society. I feel it is my responsibility to correctly prepare them for helping the community and society as well.
I agree that I do have a commitment to my society. I believe that a lot of my commitment should be continuing education for others and making sure that children are aware that they also have a responsibility to society.
I agree that I have the responsibility and the commitment to use the knowledge and skills I have gained to help improve society. Not everyone gets the chance to go to college or to have the opportunities that I have been blessed with. I intend to continue college by attending graduate school and helping everyone I can better their own lives in the process. I am excited about my future in the <b>DELETED</b> field.
I agree that I should try to improve society whenever possible but I do not agree that it is my responsibility.
I agree that it is important to use the knowledge that I have gained from my courses at SMSU to help improve society. My classes have taught me how to communicate with others and work out issues that we may not agree on. My college experience has opened my eyes to cultures and issues I never would have seen if I had not attended college. With that knowledge I hope to help those who are struggling and in need of help.
I agree that it is my responsibility to use my knowledge and skills from SMSU to improve society and the next generations to come as I venture into education but with all of the strict and unaccommodating requirements for many things with the new MTLE assessments for education and the edTPA assessment it has left me questioning if education is really worth going into considering all of the expenses with a minimal salary to look forward to after graduating. I love working with people, helping people, and I do truly feel it is my responsibility to work with people and better their lives.
I agree that the education that I have obtained needs to be put to good use. I also think that in order to make necessary and big changes to improve society collaboration needs to occur. I think it's more effective the more people you have join in on an effort to change.
I agree that to an extent I will try to help improve society, but I am not going to be an activist and try to change the world. I will do my part to help those in my community, but I prefer to keep to myself and stick to my opinions, even if they are not popular, on many current political issues.
I agree that, especially with my major I chose, I have the ability to improve society. However, I am not sure how much I will collaborate with others. I am a bit of a lone wolf.
I agree with it because as a writer I can improve society through my writing. I have been told my writing is weird, but I have taken that into the writer I am.
I agree with the statement because as a lifelong learner it is important to engage in collaborative opportunities to become a better citizen.

Participant Responses
I agree with the statement because now I know and am more aware of things in society. I know I can't do it by myself and also know that I need others in whatever I do to achieve the high goals.
I agree with this statement because a lot of society's problems usually occur when there is a miscommunication between to separate parties. With the education that I've earned at SMSU I will be able to better demonstrate reasoning along with being more open to other ideas while still being able to voice my opinion if it has not changed.
I agree with this statement because I believe that our world is what we make of it. If we do not better ourselves in order to better others than we are just plain selfish. We need more people who are capable of being that leader to help lead and guide the people who need it. We all need to work together to make this world go round.
I agree with this statement because I believe that with the skills I have learned while at SMSU I am more confident My knowledge base is more in depth therefore I can collaborate with others in society more easily and use my skills more appropriately that I have learned to communicate more effectively.
I agree with this statement because I believe with my years of education and experience here at SMSU, I have learned how to collaborate with others. I can work with others in my field of being a social studies teacher. Hopefully, with my influence on the youth of society, I can work with other teachers to help improve society and educate others to do the same.
I agree with this statement because it is true. We were all given a great opportunity and it is now our time to go out into the world and help others have a chance to get that same type of opportunity to help our society and world.
I agree with this statement because most of my classes have had the underlying theme of improving society.
I agree with this statement because one person can only do so much in changing what needs to be changed in the world. They need help in getting ideas on what to do and how to do it.
I agree with this statement that it is important to use knowledge and skills that an individual possesses in order to improve society. I have gained this opinion not only through my education at SMSU, but through my continued education in school, but through my work experiences as well.
I agree with this statement, because throughout my education at SMSU I learned how to work with others and collaborate with them and be successful with whatever the task is at hand. So with a DELETED major, science is all about problem solving, so this ability to work with others, ask questions and be time efficient will be a great asset to me and the group that I am working with.
I agree with this statement. I am receiving a bachelor's degree in DELETED , along with a minor in DELETED . As a future educator, I need to have the ability to collaborate with others. It is so important to collaborate in the field of education. By collaborating with other educators and parents, it will allow the students to better their education. By bettering the education of the student, it will allow them to become better individuals. These future students are our future, and we need to do all we can to improve the future.
I agree, SMSU has done a lot for me personally and professionally. I feel like I am a better person because of the school and I have a desire to improve society because of it.
I agree.
I agree. By coming together and helping each other with the skills I've learned could help society. That's how we as humans learn and try new things. We must learn to be able to understand one another. It starts by helping.
I am able to listen to other ideas and input ideas of my own in order to help improve problem areas in the community. I also listen with an open mind in order to get more ideas out there.

Participant Responses
I am completely committed to using my knowledge and skills to improve society.
I am focused on my own career and do not think it is my duty to improve society. My duty is to prove for myself and family in the future.
I am in the middle of this statement because I already had a strong sense of who I was before transferring to SMSU and there was nothing that influenced me one way or another.
I am much more aware of what is going on across the globe and am better prepared when undertaking major issues to be addressed. I am much more aware of the complexity of addressing such issues.
I am neutral in regards to the above statement. If the situation presents itself than yes I will use my knowledge and skills to improve society. I am unsure if I will ever actively pursue improving society, but I will do my best to do so through my career.
I am not a political science major and I don't pay enough attention to what's going on in society to feel like I deserve to have input.
I am now confident that I have a degree.
I am willing to help others when it is needed and use my education to better help others. I have had this mentality before attending SMSU and it has not changed.
I believe I can use my knowledge to improve my community, but it will be by emphasizing the importance of health and fitness.
I believe I have developed the skills to make the world a better place but my skills can only flourish when they are combined with the knowledge, skills, and talents of other.
I believe in volunteering and helping our neighbors and other society members.
I believe that I can make a positive impact on the community. With my time at SMSU I learned that I have a want to try to better not just myself and the local community but the national community. I have gained valuable resources and skills that I think I can apply what I've learned here to the real world.
I believe the knowledge I received will help me to improve diversity acceptance within my community. To be able to bring people together to solve diverse issues, rather than fight about them and achieve nothing. Diversity is a problem we can all solve if we work together to understand our differences and work together.
I believe we are to continue to show compassion to others and respect one another. Consider it pure joy to serve as a leader in a community.
I can help educate others with what I know.
I can say my major is involved in improving society. Society is directly involved with technology. It can make it easier or harder for people. Making technology easier for people is the main goal for computer programmers.
I can take what I learned at SMSU to benefit myself out in the world and to help others
I completely agree that everyone has the responsibility whether educated or not to try to improve our society for the better.
I didn't learn these values through my education at SMSU. This basic concept was instilled in me through volunteer work and a bond with my community growing up. I don't want to be stuck in a society that can't better itself; I always am improving.
I do want to improve society since I ultimately want to become a college professor, but I do not feel that I have the responsibility to do so. It is not because one has received an education that he/she should have to feel responsible for others; one is totally free to be self-interested and use what he/she has learned in that way.
I don't believe I need to help society.
I don't feel like have a responsibility to use my knowledge since we live in a free country I can choose if I want to or not.



<b>Participant Responses</b>
I don't get why just because you went to school that it's your job to try and fix the problems with society. If everyone just worried about doing their part I believe things would start to shift directions. It's when you try and change other people and force your opinions and feelings onto others when things start to get worse.
I don't give SMSU the credit for wanting to serve others. While SMSU has been a part of shaping that in me, my faith in Jesus Christ has lead me to desire to be a servant. I give all Glory and Honor to Him.
I don't know.
I don't know.
I feel as a citizen of my community that I should use the skills I have learned and share them with others to make a safer and better world for our generations to come.
I feel as if I was capable of doing this before I took any courses at SMSU.
I feel as if the main responsibility we have as human beings is to make society a better place for our future generations. In order to do that we need do a good job of treating everyone with respect and working with people who have different viewpoints in order to reach a common ground to improve quality of life within our society.
I feel blessed that I had the opportunity to gain an education and I feel obligated to use this blessing to help those in need who want education but don't have options for loans, good parents to help in hard times and motivate them and such.
I feel confident in what I learned and I have insight to different points of view on certain issues so I know how to deal with different options.
I feel I am able to gather facts and understand what the data means. This may help reduce a waste of time and money for the community and company that I work for.
I feel like I can make a contribution to society through my job that I hope to receive
I feel like improving society was never really a main topic of concern.
I feel like it is every person's responsibility to use their knowledge to improve society.
I feel like it is important for people to be educated about topics that concern their everyday lives.
I feel like that my only goal isn't to improve society. I feel like there is more into this. I feel like I need to work on improving myself and my neighborhood instead of society as a whole.
I feel like whenever I begin to earn enough money to donate and help society will be when I begin to have more ability to improve society.
I feel like with my degree I have the knowledge to help protect the community and do things that I need to do in order to advance the community as well.
I feel somewhat neutral on this topic because I have not been involved in the community in any way because of SMSU. I have gotten involved on my own and through my company, but I do not think that my education had anything to do with it. I have completed my degree online from 2 hours away, so I am no longer in a position to get involved within the Marshall area.
I feel strong with this question because my education has helped me understand how to help improve the society with different things to do to help build a community.
I feel that in my career I would be most successful if I used my knowledge to improve our society.
I feel that my education through SMSU will help me to not only improve the workforce which I will be entering into, but to also improve the community that I am living in. I will help to improve my surrounds and make help to make it a more comfortable and safe place myself and the others that I'm with.
I feel that the whole point of getting a college education is to use that knowledge to help others. By giving that knowledge back to the community and society, we are making others better and improving life in general for society.
I have a very poor outlook on life right now.

Participant Responses
I have always felt this way.
I have always had a sense of responsibility, but with my education and the experience from that, coupled with my career, I have a better sense of how I can make a difference, which only bolsters the responsibility and commitment to collaborate with others and improve society. I have already started to make a difference in my career and community and it's working!
I have been involved in this these types of activities prior to ever enrolling in SMSU.
I have gained an understanding of different cultures through my time at SMSU and feel that I am able to have an understanding of their views on different aspects.
I have gained the knowledge of the different kind of cultures in society today and use them to help communities understand each one. Not everyone is the same and from what I learned about differences is to accept them.
I have gained the skills and abilities while attending SMSU to be able to successfully help others with their health and fitness and help get rid of the problem of obesity in America today! I look forward to passing on what I have learned at SMSU to others throughout my career!
I have learned a lot.
I have learned a lot about myself and the community in which I can make a difference in.
I have learned a lot of knowledge that others have not learned. It is my responsibility to use these skills to help and improve society. I need to be able to share my knowledge with society and be able to describe how it can improve it.
I have learned how to write a lot better than I used to. Due to this, I could do volunteer work for helping others with their writing, English, grammar, etc. I also help my friends out often with their papers in different colleges.
I have learned many life and social skills that help me collaborate with my fellow peers on issues or just in developing a better environment for others. I was in many group projects with students which helped me grow a certain set of skills to help persuade and manage group efforts to obtain a goal.
I have learned many things through my college career, and making a difference has been one of the ideas that has been pushed more than the rest. It is very important to BE the change. I have the responsibility to do so.
I have not had classes or educational opportunities that have dealt with society/the community.
I have participated in a lot of advocacy groups during my time at SMSU. I just compiled a book about the talents of undocumented immigrants and what they have to offer the United States. I hope to have a positive impact on the community and society as a whole.
I have the responsibility and the commitment to use the knowledge and skills I have gained through my education to collaborate with others to improve society.
I have these skills but I use them for my personal achievement and goals, not to serve others.
I hope that education is an opportunity to make a change in society. I intend to complete this commitment through my future career.
I just have to use what I have learned in my 4 years and use it in the real world. Hopefully it will improve society as well.
I know that issues will always arise and I am ready not only to have a voice, but act out the necessary engagements to better the society and share love to all people.
I know that there are a lot of people in our society struggling with problems, such as substance abuse, after they have run-ins with law enforcement. I feel like an active way to contribute to making society a better place is to help these people get their lives back and deal with their problems appropriately.
I learned how to write and act civilized.

Participant Responses
I now have deeper knowledge and skills to collaborate with other and improve society even though that was an interest before attending SMSU.
I now have the knowledge and skills to help members of my society to become financially secure and independent.
I plan to collaborate with other educators to help improve the education system.
I plan to help give back to my community and help to make my community a better place.
I plan to make a difference in whatever society I choose to live and work in.
I plan to pursue a career in healthcare, so I believe that I can use knowledge to improve the lives of others. My responsibility is to the individual people that I will serve; this may or may not improve society as whole.
I put a 3 because I don't think that SMSU did anything to change what I want to do with life involving my career and helping others. It did get me to meet more people and learn how to be more open minded, but my future dreams and ideas are similar to when I first started at SMSU.
I really enjoyed how diverse SMSU was each year through the events, students, and professors.
I strongly agree because through the Liberal Arts Core curriculum that we were required to take here at SMSU, I was able to take multiple courses that will help me to work with others. Examples of these include <b>DELETED, DELETED, and DELETED</b> classes.
I strongly agree with the above statement. Furthering ones education will only improve the knowledge and skills to collaborate with others to improve society. The more knowledge learned, the more one can achieve. People choose to learn more to better themselves, ultimately improving society. Along with learning new skills and gaining knowledge from education, individual life-long learning is also very important, so important it will have an impact on society as well.
I strongly agree. I plan to use all of my knowledge and skills to improve society both at my job and in the real world.
I strongly agreed with my above choices because it is clearly explained what I have learned from SMSU.
I strongly believe in the power of collaboration, and I think that it is something that can really benefit our society. However, the teaching of collaboration is not necessarily something I saw emphasized in my time at SMSU. If it was, it was often done poorly and resulted in experiences that made me despise the concept. The assignment of a group project does not necessarily constitute the building of collaborative skills. More often than not, this simply creates animosity and discontent amongst a group of peers. As a future educator, I think it is important to improve these models of group work and collaboration so that when we are out in society, we are equipped with the skills needed to successfully improve society.
I taught myself.
I think giving back to the community is a great thing and is the only thing that will make our world better.
I think it is safe to say that the skills I have acquired at SMSU will help me become a better person and strive to make the world a better place.
I think that although SMSU helped me in some aspects, that many of these were already set in my mind and SMSU had no to little influence.
I think this is true to a degree but my career is one that will only indirectly improve society so I would feel hypocritical saying that I strongly agree with the above statement.
I try to be involved with the community as much as I can, but working at 3 jobs, going to school full-time, and being very active in clubs are very time consuming. It gives me no time to get involved with the community.
I want to be able to work with kids and show them that there is more out there in their lives if they just put their minds to it. They can do anything!

Participant Responses
I want to help people in a human service career and improve my community.
I want to help people through my career whether it be volunteering or a career move. I want to be about to help and improve society.
I want to make a difference not only in the community but the world; however, it starts on a small scale.
I want to use what I learned while at SMSU to better the world in whatever way I can even if it is just to help someone else to change society.
I want to work with less fortunate people to help improve their lives. Without helping others, we, as a community, will regress. It's important to help others.
I went into <b>DELETED</b> so that I can have a career in helping others live a healthier and higher quality of life. I declared <b>DELETED</b> as a second major because I want to be able to reach out to a wider clientele. I haven't decided whether or not to continue on to graduate school, but I still feel a responsibility to use my knowledge of training to help others obtain healthier goals such as low blood pressure, lose weight, etc. I want to help people be able to change the course of their life before it gets to the point of needing medication. A lot of medical expenses can be prevented through proper nutrition and exercise. I want to help people not only feel better about themselves, but be able to live longer and enjoy life to the fullest. The <b>DELETED</b> prepared me to interact with clients through the service-learning project with the <b>DELETED</b> - it was an invaluable opportunity to work in the community and apply the information I learned in class.
I will be a teacher and as a teacher, I will be a crucial member of society. I am teaching their children and I need to use the skills I have learned at SMSU in order to be a successful teacher in a challenging society.
I will be a teacher. A teacher improves society and helps the world spin. It is not my job to help students it is my passion.
I will be an elementary teacher, so I will have a huge role in shaping the future of our society. That is such an important task.
I will use all my skills that I have learned at SMSU in my current place of employment. I have gained a lot of important roles and responsibilities to run a business and how to oversee upper management skills and duties.
I will use my education in <b>DELETED</b> to help improve the health and fitness of the society. I would be working with those in the medical field to base my work on improving a client's personal health.
I will use my education to enhance my current career. I currently work in volunteer services through <b>DELETED</b> . I have always had a commitment to improving society. It is not because of my education that I do that. I was involved in those efforts before I furthered my education. I will draw on the things I have learned to enhance that process; I do not feel that is it solely because of my education.
I will use my knowledge that I have gained.
I will use the skills that SMSU taught me to teach people about insurance and improve my career.
I will use what I have learned here at SMSU to engage other people in community, and political issues.
I work for a company that is very society oriented. Multiples times during the week, I'm out in the community doing my job. For example, finding stories to relate to the community, such as a local artists that is nationally known. So, I want to show what projects he's currently working on and/or any shows he will be appearing.
I worked hard to get good grades and get my college diploma.
I would like to improve certain aspects of society but it is not a major focus of mine nor did I spend time focusing on it during my education, as there was no time for someone who is taking 18 credits per semester, part time job, and off campus.

<b>Participant Responses</b>
I would like to improve people's lives on my own and not with the help of others. I like to do my own thing to make people happy and I only can hope they spread their happiness to others.
I would like to improve society by applying ethics to my future occupations and improve the perceptions of those I work with.
I would use my knowledge to service people who are not able to take own responsibilities through financial support and idea.
I'm looking out for myself. Helping others along the way is something I will do if I'm able.
I'm neutral with this statement because I will use my knowledge and skills to collaborate with others but it may not be for the improvement of society it may just be for the better good for the company that I will work for. Those decisions may have no effect of society as a whole.
In possessing the knowledge that I have gained here at SMSU, I have to conclude that with knowledge comes moral responsibility to do what is right with that knowledge. In fact this process is twofold and by benefiting the common good and improving society, we also enrich ourselves. This only seems the most logical use of my education and is the reason why I choose to agree with the statement above. Thus forth, I intend to commit my skills and knowledge to working with others to benefit mankind because I choose to do what is morally right so that I can enrich the state of living.
It is all of our responsibility to collaborate with others to improve society. We are the future leaders of our nation and we all have power and ability to impact our society positively.
It is important that people share their education with others to better society. I believe that I should use the knowledge and skills to improve society for everyone.
It is my civic duty to utilize the knowledge and skills that I have attained to the betterment of all of mankind. Go Mustangs!
It is true that we must be committed to helping; however, we must also hold others to the same expectation in order for there to be real improvement.
I've learned/studied many different learning techniques throughout my time at SMSU. I have also, learned how to apply these techniques to real life situations, through community activities, campus lab works and off campus real life job/working conditions.
Knowledge acquired at SMSU is essential in improving the society around me in that an able to share my diverse experience with others and contribute to the building of the society around me. Involving different parties in engaging ways to improve on lives of the community miners and the world as a whole/at large.
Many of the courses I have taken here at SMSU stressed group collaboration through various projects. The idea that the work we do after completing our degrees should be for the benefit of society was also stressed.
My education at SMSU has given me real life opportunities to discover myself and how others live. Since this has happened I have made it my goal to change the world through students by giving them a positive environment to learn in.
My education here has taught me how different ways to communicate and help out our surrounding society. This has happened because I was taught what not to do and what to do.
My education that I have received from SMSU gives me the ability to voice my opinion while being able to work with people of different values and personalities.
My future plans allow me to be in close contact with individuals with diverse backgrounds.
My major has created a caring side for me. It has persuaded me to become more aware of others around me and become more aware with our ever changing world.
My time at college has helped me gain an increased independence, as well as helped me to realize that I am fulfilled by learning and by being around people for whom I perceive as "smart."

Participant Responses
No, I don't feel like I received enough education with <b>DELETED</b> program. Having only <b>DELETED</b> makes it difficult to learn or to get advice from other than just one teacher.
Not everyone has the opportunity to go to college, so I want to utilize my knowledge that I have obtained when others can't.
Not involved.
People must work together to improve society. More voices could lead to more action taking place.
Since I'm educated in <b>DELETED</b> , I have the responsibility to inform others about the health of the environment as well as to teach others to be environmentally responsible.
SMSU can't have all the credit, my parents raised me well, but SMSU did build on what my parents started to be an educated and productive member of society.
SMSU has enabled me to adapt with the trend of society moving towards a team-based effort, thus allowing me the ability to maintain an effective relationship with many different working teams.
SMSU has provided me with, more than anything, a broader perspective on how to handle and thrive in diverse and adverse situations. There were classes in the program that dealt with that issue specifically, as well as taught about how our actions change the environment around us. With that information, I believe I have the tools to help improve society.
SMSU has taught me how to work with others to make the future a better place to be.
SMSU taught me many skills that will help me when I get out into the real world. When I get into industry I will be working with many types of people so I need to know how to work with them.
SMSU's liberal arts curriculum has made me a more well-rounded individual. The diversity of the student body helps you to attain new perspectives. It also conditions you to become less sensitive to diversity and to challenge stereotypes. This type of perspective could greatly benefit any attempts to improve society.
Society as a whole will never collaborate. For every person that works hard, there are two sucking at welfare because they are too lazy to keep a job.
Specifically, since working towards the completion of my education degree through SMSU I have taken over the responsibility of making changes at my high school within their cheer leading program. I am working to create more opportunity for girls who may not feel comfortable participating in other sports. I strongly believe that being involved in a program such as this can improve educational, physical, and mental well-being.
Thanks the <b>DELETED</b> program at SMSU I have the skills I need to do good work wherever I choose to live. I've learned not only my trade, but also the interpersonal skills needed to function in a complex and often challenging social system.
The classes I have taken have not made me to collaborate much with others nor really make me want to engage politically.
The courses that I have taken at SMSU has taught me skills and provided me with the knowledge to improve society.
The <b>DELETED</b> program as SMSU has helped me grow academically and as a person. I know I will contribute to the field I am going into and make a difference.
The main job for a college is to educate a student with knowledge and necessary tools to use, and upon graduation, it's up to the student to use this knowledge and tools to change the society. I want to be a man of society.

Participant Responses
The reality is that I have a duty to myself. I must live my own life, and regardless of how that life affects others, it will affect me. I have to live with myself. I have an interest in changing the world, and improving society, but it's hardly because of my education that I feel that way. You're trying to take credit for something that you didn't really cultivate.
The reason I disagree with this statement is that my college education in itself doesn't oblige me to collaborate with others to improve society. As a citizen of this country and a human being, I am already compelled to try to improve society. Maybe not society as a whole, but my own sphere of influence. My time at SMSU hasn't produced any grand revelations as to a larger purpose of dedicating my life to service. SMSU served its purpose for me; I acquired a degree at a reasonable cost in a region that was convenient for me. I'm thankful for my time at SMSU and the education I've received, but I haven't been transformed as a person here and that isn't a bad thing.
The school tries to prepare you for the real world; let you figure it out on your own and how to work with others. In a job you are going to have to work with others who don't always agree with you or understand what you are saying.
There are really good classes that are offered here to help with this. If my advisor would not have told me about them I would not have taken them. Learning to understand others is very important in any career, whether it includes your coworkers or people you will come across on a daily basis.
This is what most people would want. Students who go to college attend not only to better their futures within a field that interests them, but also to improve the world they live in by becoming successful and providing a stable life for their future families.
This school has taught me about responsibility and ability to work hard!
Through my organizational involvement I have gained the skills necessary to become an active member of society. I have always been involved in community projects, but SMSU gave me the platform and the connections needed to make contributions to society around Marshall.
Through SMSU, I worked with a diverse group of people and am prepared to make others around me better.
Throughout my experience at SMSU, I was involved in a few organizations such as <b>DELETED</b> and <b>DELETED</b> . Those two clubs helped me work with different people to improve different situations within the education department.
Throughout my time at SMSU I have worked with the faculty and students through multiple forms. I have learned from this how to work cooperatively and ways to communicate. I can the apply these learned skills to benefiting society and making improvements.
Too broad of a question, and my time at college wouldn't change my view on this question one way or the other.
We all need to work together. If we're all in it for ourselves then we will never accomplish anything together. I came to this school with the majority of the above questions. I didn't forget and relearn how to be a decent human being at SMSU.
Whether or not you go to college you have a duty to server and better other around you
Why all the emphasis on 'using my ability to improve society' - why not improve myself first?
With everything we learn in our classes, even those that do not require us to do community services, we can help society in some way or form.

<b>Participant Responses</b>
With my degree from SMSU and with everything that I have learned, I can help people become healthy and more self-confident in their appearance, I have the knowledge and self-drive to want to help others achieve a better life.
With my job as a social worker.
With my major of <b>DELETED</b> I have learned many things through the <b>DELETED</b> classes that I will hopefully pass on to my future students.
With <b>DELETED</b> minor, I have had chance to learn a lot about society, its social problems and ways to help out for the betterment of it. I will look forward to use my education and experience in the real world and help out the society.
With the education that I have obtained through hard work at SMSU I want to help those who were not able to gain a higher education. I want to help people who do not have the education to help themselves.
With what I have learned here at SMSU, I believe that I can take what I learned and put it to good use in the communities to help out and make it a better place. I have put on races, and triathlons and I believe that I have the knowledge to use those skills and put those on in different communities and bring the community together and have fun.
You can't improve society solely. You need other peoples help and need to work together to help improve society.

Note: Responses such as “No” or “None” are not included. Minor typos and misspellings in responses have been corrected. References to individual persons, departments, and organizations have been replaced with “**DELETED**”.



## Are there any other comments you would like to make?

Participant Responses
All I've ever wanted was to know that I was worthwhile, that I could contribute to society and support myself as an independent professional. While I can't speak for every major at SMSU, the <b>DELETED</b> program gave me the skills and confidence I need to build a good life for myself. With the education I received at SMSU I am prepared to live and work in a very challenging time. I will say, Marshall Minnesota is a horrible place to live. I truly hate this part of the country. But this is perhaps the truest testament to the value of my education here at SMSU. The quality of the education I received here was enough to justify my staying in a place that I wholeheartedly despise. I have no love for Marshall, but Southwest Minnesota State University will forever hold a special place in my heart. This school gave me the chance that no one else would. I am eternally grateful.
As a <b>DELETED</b> major I think most of these questions are not beneficial to SMSU as a business. Serving others and the society was asked way too much in this survey. Students do not go to college so they can serve others.
Despite all the hardship faced over these years, I am very much indebted to S.M.S.U. for the life skills I have garnished here.
Due to being an older, non-traditional student, none of these questions really apply to me so this survey is not really applicable to me at all. For example, I have been participating in local politics for awhile now & it has nothing to do with my SMSU education. If anything, taking courses only hindered my ability to be more involved in my community which would have been the case regardless of the college I had chosen.
First year seminar is not only a waste of money for students and tax payers but it is also a waste of time. The same goes with senior seminar. I learned nothing from these classes and getting rid of these classes would not only make students happier but it would also help with the budget crisis that SMSU is faced with at the moment. SMSU also needs to realize that students needs come first before what any faculty member thinks or what anyone in the president's cabinet thinks. That is the thing SMSU has gone away from and what is hurting SMSU.
Get rid of 1st and 4th year seminars. Complete waste of time. Liberal arts are great to complement a degree, but a direct focus on them could be deadly for the institution. We are located in a blue collar, get down to work community and region of the state. That does not mean we ignore liberal arts, but our LAC should more closely resemble the population of those students we recruit.
I am taking all on line classes and most of my generals were through another college many years ago. So this survey really did not apply to me.
I couldn't have asked for a better team or school to complete my Bachelor's degree with.
I do not know if I would dedicate everything to SMSU. I feel that at whatever college I would be at I would receive such an education or at least I hope I would. SMSU is great and all, but there are many things that would have made it better, but it is definitely the people who make this school what it is.
I don't think it is fair there is only one graphic design teacher and that he has to cram three classes into one.
I don't understand why you made me take this farce of a questionnaire.
I enjoyed my 2 years at SMSU. The professors were wonderful educators, and always helpful with my schoolwork. I would recommend this university to all.
I enjoyed my time at SMSU.
I enjoyed my time at this institution and have achieved a lot and learned a lot. Special thanks to the <b>DELETED</b> department and all my professors!!

Participant Responses
I enjoyed the staff at SMSU, especially in the writing and <b>DELETED</b> department. My advisor was very helpful, and helped me whenever I needed him. I appreciate the professors a lot.
I feel rather unchanged after my time at SMSU. Perhaps that is because I am older than a typical student or perhaps it is because I was an online student. I feel that the SMSU online program could use some work and that at least one teacher was not capable of effectively teaching in an online environment.
I feel that the school activities are not easily accessible and knowing about clubs and other school related events are hard to know about unless on campus all the time.
I have enjoyed my time at SMSU. I have only taken on-line classes and never attended a class on campus. I did tour the campus once. I think it is nice because of its size and I believe it has a lot to offer for being a smaller school. I feel the choices for online learning have expanded since I started taking online classes. It is because of on line classes that I have been able to get my degree. I do not have time to attend class during the day so this was the only way I could achieve my personal goal of obtaining a degree. I would like to thank SMSU for offering online classes. Also for working through <b>DELETED</b> to offer the <b>DELETED</b> degree. I was connected with <b>DELETED</b> for my <b>DELETED</b> degree. Had it not been an option to start this program through <b>DELETED</b> I would not be here today. Thank you for offering and exceptional program! I would like to see some questions that pertain to the online class as well as questions for student who attend on campus.
I have enjoyed SMSU quite a bit but I think more recruitment needs to occur in larger cities (urban area) to diversify SMSU more and open up the minds of many students that come to SMSU from very rural areas.
I have gained a large sense of community not from academics but from athletics and how involved the city of Marshall is.
I have no other comments to make about this.
I have valued my educational experience through SMSU and look forward to graduating and hopefully continuing my education through the online MBA program at SMSU.
I thought it was a major mistake for the university to cut the <b>DELETED</b> program. It was a mistake to cut the <b>DELETED</b> major and furthermore laughable that they took away the <b>DELETED</b> minor. It doesn't matter that there is <b>DELETED</b> -- SMSU is a liberal arts college without any <b>DELETED</b> degrees. <b>DELETED</b> is a language that is becoming more and more common in our society and it is a mistake not to expose the students to that culture and language. As my <b>DELETED</b> class has taught me, the world is getting smaller. Our generation is becoming more interconnected by the year and it is nothing but an advantage to learn another language. I can only hope that the university will change its stance eventually.
I wish the <b>DELETED</b> would have done a better job of being known around campus, especially by reaching out to advisors and student groups.
I would say that my ability to contribute to society was not solely derived from my education at SMSU. I am a very active member in the community, but most of that was achieved independently of the school.
If you're looking to attend a school that will look for any reason to get more money out of you (fines, change the graduation standards) and barely educate you; then SMSU is the place for you.
It's a great university.
Just because I did not agree with a statement above, does not mean that I do not participate in that activity; it simply means that SMSU did not lead me in that direction, but that other experiences pushed me in that direction instead.
Loved the accessibility on campus. I use a manual wheelchair as I have a moderate form of Cerebral Palsy!
More information and availability for volunteering to help society would be nice.
Mustang for life.
My major here at SMSU was <b>DELETED</b> . It was not in the first question of the first section.

Participant Responses
My parents instilled in me the importance of volunteering in your community.
Nothing about SMSU's student government wanted me to get involved. The leaders in that specific club make me want to avoid politics.
SMSU does not as a whole encourage civic engagement. Just the club portion of the campus is encouraged.
SMSU has been a good school. I did have many issues with trying to take online courses which really put a stress on my education. After it is all said and done I am very satisfied with my education thanks to my advisor <b>DELETED</b> .
SMSU has been the best place for me, coming here for two years, transferring out and then transferring back in was the best decision I have ever made, I made lifelong friends and couldn't have asked for a better campus and education. SMSU is WHERE YOU BELONG!
SMSU has some of the best Professors I think I have ever met, so included with their students and driven to help us in any way possible.
SMSU is awesome!!
Society can be improved when we love the Lord our God and love our neighbor as ourselves. Self-centeredness will be the road block that will stop this from happening. Selflessness will allow society to be improved. Jesus loves you! And He came to earth as a servant and died a horrible death so that He could save you! Turn to Him! Believe in Him! And you will have eternal life and abundant life!
Some of these questions pertained to my career choice. I tried to answer as truthfully as I could.
Thank you so much for all faculty and students who I interact over the course of my stay at SMSU. I learned a lot. Thank you.
The college has very liberal political biased views. I did not appreciate when professors expressed their political views during class time prior to elections. The civic engagement site's photos only showed one political party. Socialism and Marxist's viewpoints pervade the curriculum.
The degree list doesn't contain business management, and contains outdated degrees no longer offered here.
The education is a tool that I would use to help our people with it when they need help.
The <b>DELETED</b> should really be advertised more, especially on college tours. Throughout my four years at this University, it blew my mind how many times I heard "Oh, I had no idea that was there." Not to mention, I spent a lot of time in the <b>DELETED</b> studios and the only time any college tours came down in the area was because there was a person from our major directing that tour.
The <b>DELETED</b> gets taken for granted. If it wasn't for those students, the games wouldn't be broadcasted or have footage on the scoreboard. The <b>DELETED</b> just expects the students to jump whenever they said so.
Now, the most recent hire in the <b>DELETED (DELETED)</b> is so ridiculous! It would have made so much more sense if <b>DELETED</b> was hired. <b>DELETED</b> taught me more in one year than I learned in the prior three years of my education. It just really makes me upset that I put all my energy into a major/department that I feel this University couldn't really care less about. My four years at this University was only fun because of the friendships I made and had the pleasure to work with. Otherwise, it was educationally frustrating.
These are REALLY long surveys.
This college sucked.

Participant Responses
-----------------------

<p>This school wastes too much time and money on unnecessary goods and services. I would like to know why so much money was dumped into Founder's Hall when the majority of the programs do not have current equipment that graduates will be using when they reach the professional world. The school spent tons of money to build a new stadium for teams that quite frankly are subpar. That money should have been used to update the various programs tools and equipment. The reason that we are having trouble getting students to come to this school is because we don't spend the money to keep our programs current. You only need to walk into the <b>DELETED</b> or the <b>DELETED</b> (just to name a couple) and you will see what I'm talking about. Students are using equipment that is in museums, how are they supposed to be competitive in the job market? The only thing that this school has going for it is the faculty (most of those that I have encountered) are very caring, educated, and genuinely want their students to succeed. I know that I do not know all of the inner workings of this institution; however it doesn't take an insider to realize that the priorities of the University are not on the education of the students, but to make the University "look good" to outsiders. I hope the new president makes changes to bring programs into the 21st century and I will be checking in to see.</p>
--

<p>Your quiz is stupid. With no neutral choice I err on the side of disagreement.</p>
---

Note: Responses such as "No" or "None" are not included. Minor typos and misspellings in responses have been corrected. References to individual persons, departments, and organizations have been replaced with "**DELETED**".

## Further Statistical Analysis

This section of the report presents the results of additional statistical analyses of the data collected in the Civic Engagement Survey. Statistical analyses included here as follows:

- Reliability for CMG scale
- Correlations between CMG subscales and selected demographic variables
- Cross-tabulations and chi-square tests for various measures of civic engagement and selected demographic variables
- Analysis of variance for CMG subscales indexed by selected demographic variables

## Reliability

Scale	Cronbach's Alpha
Entire CMG Scale	.973
Knowledge Subscale	.912
Skills Subscale	.886
Dispositions Subscale	.929
Behavioral Intentions Subscale	.760

## Subscale Correlations

Subscale Correlations	Behavioral Intentions	Knowledge	Skills	Dispositions	Overall CMG
No. of Hours Currently Working in a Week*	-.007	.010	-.047	-.030	-.030
Current Number of Hours Enrolled*	-.032	-.026	.022	-.011	-.009
How Often Attend Religious Activities*	.127	.131	.116	.107	.137
Estimated No. of Courses with Community Involvement^	.200	.234	.282	.264	.274

\*Spearman correlation computed for these variables ^Pearson correlation computed for this variable

Note: Highlighted values represent significant correlations at  $p \leq .05$ .

## Cross-tabulations and Chi Squares

<b>Gender Cross-tabs</b>	<b>Value</b>	<b>df</b>	<b>Asymp. Sig. (2-Sided)</b>
X * Volunteering for One-Time Service Activities	3.863	4	.425
X * Volunteering for Campus Events	3.661	4	.454
X * Participation in Political Activities	5.936	4	.204
X * Community Involvement through Campus Organization or Club	1.393	4	.845
X * Participation in Community Service for Scholarship	3.738	1	.053
X * Estimated No. of Courses with Community Involvement	2.370	3	.499

X = Gender

Note: None of the chi-square values reached significance at  $p \leq .05$ . See table(s) below for details.

<b>Number of Hours Currently Working in a Week Cross-tabs</b>	<b>Value</b>	<b>df</b>	<b>Asymp. Sig. (2-Sided)</b>
X * Volunteering for One-Time Service Activities	26.010	12	.011
X * Volunteering for Campus Events	15.288	12	.226
X * Participation in Political Activities	7.795	12	.801
X * Community Involvement through Campus Organization or Club	28.468	12	.005
X * Participation in Community Service for Scholarship	0.826	3	.843
X * Estimated No. of Courses with Community Involvement	19.060	9	.025

X = Number of Hours Currently Working in a Week

Note: Highlighted values indicate significant chi-square at  $p \leq .05$ . See table(s) below for details.

**Number of Hours Currently Working in a Week \* Volunteering for One-Time Service Activities**

		Volunteering for One-Time Service Activities					Total
		None/Never	Once each school year	Once or twice each semester	About once a month	Nearly every week	
Number of hours working in a week	0	89	30	13	2	0	134
	Less than 20	75	34	16	1	2	128
	20-39	102	23	10	1	1	137
	40+	62	11	7	0	0	80
Total		328	9846	98	4	3	479

**Number of Hours Currently Working in a Week \* Community Involvement through Campus Organization or Club**

		Community Involvement through Campus Organization or Club					Total
		None/Never	Once each school year	Once or twice each semester	About once a month	Nearly every week	
Number of hours working in a week	0	60	26	22	11	13	132
	Less than 20	38	25	28	11	26	128
	20-39	66	22	22	10	17	137
	40+	50	10	10	3	5	78
Total		214	83	82	35	61	475

**Number of Hours Currently Working in a Week \* Estimated Number of Courses with Community Involvement**

		Estimated Number of Courses with Community Involvement				Total
		0	1-2	3-4	5 or more	
Number of Hours Working in a Week	0	54	55	12	12	133
	Less than 20	45	63	11	6	125
	21-39	66	49	13	4	132
	40+	46	27	5	1	79
Total		211	194	41	23	469



<b>Current Number of Hours Enrolled Cross-tabs</b>	<b>Value</b>	<b>df</b>	<b>Asymp. Sig. (2-Sided)</b>
X * Volunteering for One-Time Service Activities	18.061	8	.021
X * Volunteering for Campus Events	9.436	8	.307
X * Participating in Political Activities	4.263	8	.833
X * Community Involvement through Campus Organization or Club	12.588	8	.127
X * Participation in Community Service for Scholarship	0.556	2	.757
X * Estimated No. of Courses with Community Involvement	12.598	6	.050

X = Current Number of Hours Enrolled

Note: Highlighted values indicate significant chi-square at  $p \leq .05$ . See table(s) below for details.

**Current Number of Hours Enrolled \* Volunteering for One-Time Service Activities**

		Volunteering for One-Time Service Activities					Total
		None/Never	Once each school year	Once or twice each semester	About once a month	Nearly every week	
Current number of hours enrolled	None	7	3	2	0	0	12
	Less than 12	86	22	13	2	4	127
	12+	175	88	63	13	2	341
Total		268	113	78	15	6	480

**Current Number of Hours Enrolled \* Estimated Number of Courses with Community Involvement**

		Estimated Number of Courses with Community Involvement				Total
		0	1-2	3-4	5 or more	
Current number of hours enrolled	None	4	5	3	0	12
	Less than 12	68	43	9	3	123
	12+	139	146	29	20	334
Total		211	194	41	23	469

<b>Marital Status Cross-tabs</b>	<b>Value</b>	<b>df</b>	<b>Asymp. Sig. (2-Sided)</b>
X * Volunteering for One-Time Service Activities	12.627	4	.013
X * Volunteering for Campus Events	17.326	4	.002
X * Participation in Political Activities	3.518	4	.475
X * Community Involvement through Campus Organization or Club	31.348	4	.000
X * Participation in Community Service for Scholarship	2.194	1	.139
X * Estimated Number of Courses with Community Involvement	8.854	3	.031

X = Marital Status

Note: Highlighted values indicate significant chi-square at  $p \leq .05$ . See table(s) below for details.

**Marital Status \* Volunteering for One-Time Service Activities**

		Volunteering for One-Time Service Activities					Total
		None/Never	Once each school year	Once or twice each semester	About once a month	Nearly every week	
Married or not	Married	58	13	5	3	1	80
	Not Married	208	100	70	12	5	395
Total		266	113	75	15	6	475

**Marital Status \* Volunteering for Campus Events**

		Volunteering for Campus Events					Total
		None/Never	Once each school year	Once or twice each semester	About once a month	Nearly every week	
Married or not	Married	68	7	3	2	0	80
	Not Married	257	90	42	2	3	394
Total		325	97	45	4	3	474

**Marital Status \* Community Involvement through Campus Organization or Club**

		Community Involvement through Campus Organization or Club					Total
		None/Never	Once each school year	Once or twice each semester	About once a month	Nearly every week	
Married or not	Married	58	7	7	3	4	79
	Not Married	153	76	74	32	56	391
Total		211	83	81	35	60	470

**Marital Status \* Estimated Number of Courses with Community Involvement**

		Estimated Number of Courses with Community Involvement				Total
		0	1-2	3-4	5 or more	
Married or Not	Married	43	20	6	6	75
	Not Married	168	169	35	17	389
Total		211	189	41	23	464

<b>How Often Attend Religious Activities Cross-tabs</b>	<b>Value</b>	<b>df</b>	<b>Asymp. Sig. (2-Sided)</b>
X * Volunteering for One-Time Service Activities	36.677	12	.000
X * Volunteering for Campus Events	32.323	12	.001
X * Participation in Political Activities	13.424	12	.339
X * Community Involvement through Campus Organization or Club	13.639	12	.324
X* Participation in Community Services for Scholarship	1.699	3	.637
X * Estimated Number of Courses with Community Involvement	34.629	9	.000

X = How Often Attend Religious Activities

Note: Highlighed values indicate significant chi-square at  $p \leq .05$ . See table(s) below for details.

**How Often Attend Religious Activities \* Volunteering for One-time Service Activities**

		Volunteering for One-Time Service Activities					Total
		None/Never	Once each school year	Once or twice each semester	About once a month	Nearly every week	
How often attend religious activities	Do not attend	78	12	16	5	1	112
	Once or twice a year	80	28	13	1	2	124
	Once or twice a month	67	39	25	3	1	135
	Weekly or more than weekly	41	34	24	6	2	107
Total		266	113	78	15	6	478

**How Often Attend Religious Activities \* Volunteering for Campus Events**

		Volunteering for Campus Events					Total
		None/Never	Once each school year	Once or twice each semester	About once a month	Nearly every week	
How often attend religious activities	Do not attend	92	12	6	1	1	112
	Once or twice a year	90	26	8	0	0	124
	Once or twice a month	87	32	14	0	1	134
	Weekly or more than weekly	57	28	18	3	1	107
Total		326	98	46	4	3	477

**How Often Attend Religious Activities \* Estimated Number of Courses with Community Involvement**

		Estimated Number of Courses with Community Involvement				Total
		0	1-2	3-4	5 or more	
How often attend religious activities	Do not attend	69	31	8	1	109
	Once or twice a year	60	49	9	3	121
	Once or twice a month	43	64	16	9	132
	Weekly or more than weekly	38	49	8	10	105
Total		210	193	41	23	467

## One-way ANOVAs

### Gender

		ANOVA				
		Sum of Squares	df	Mean Square	F	Sig.
BEHAVIORAL INTENTIONS Subscale	Between Groups	2.132	1	2.132	1.672	.197
	Within Groups	591.717	464	1.275		
	Total	593.849	465			
KNOWLEDGE Subscale	Between Groups	2.638	1	2.638	2.490	.115
	Within Groups	486.231	459	1.059		
	Total	488.868	460			
SKILLS Subscale	Between Groups	1.939	1	1.939	1.832	.177
	Within Groups	482.830	456	1.059		
	Total	484.769	457			
DISPOSITIONS Subscale	Between Groups	4.818	1	4.818	4.451	.035
	Within Groups	488.136	451	1.082		
	Total	492.954	452			
OVERALL AVERAGE	Between Groups	2.502	1	2.502	2.438	.119
	Within Groups	434.081	423	1.026		
	Total	436.582	424			

Note: Highlighted values indicate significant ANOVA at  $p \leq .05$ .

### Descriptives

		N	Mean
BEHAVIORAL INTENTIONS Subscale	Male	179	3.5903
	Female	287	3.7294
KNOWLEDGE Subscale	Male	177	3.6215
	Female	284	3.7770
SKILLS Subscale	Male	176	3.5014
	Female	282	3.6352
DISPOSITIONS Subscale	Male	174	3.6414
	Female	279	3.8534
OVERALL AVERAGE	Male	166	3.6205
	Female	259	3.7777

## Number of Service Learning Courses

### ANOVA

		Sum of Squares	df	Mean Square	F	Sig.
BEHAVIORAL INTENTIONS Subscale	Between Groups	25.069	3	8.356	6.917	.000
	Within Groups	550.884	456	1.208		
	Total	575.953	459			
KNOWLEDGE Subscale	Between Groups	29.227	3	9.742	9.751	.000
	Within Groups	451.577	452	.999		
	Total	480.804	455			
SKILLS Subscale	Between Groups	39.095	3	13.032	13.542	.000
	Within Groups	430.142	447	.962		
	Total	469.237	450			
DISPOSITIONS Subscale	Between Groups	35.030	3	11.677	11.680	.000
	Within Groups	443.858	444	1.000		
	Total	478.887	447			
OVERALL AVERAGE	Between Groups	33.564	3	11.188	11.857	.000
	Within Groups	391.591	415	.944		
	Total	425.155	418			

Note: Highlighted values indicate significant ANOVA at  $p \leq .05$ , see table below for details.

### Descriptives

		N	Mean
BEHAVIORAL INTENTIONS Subscale	0	209	3.4498
	1-2	188	3.8138
	3-4	41	3.8537
	5 or more	22	4.3333
KNOWLEDGE Subscale	0	205	3.4450
	1-2	188	3.8777
	3-4	40	3.9806
	5 or more	23	4.2464
SKILLS Subscale	0	205	3.2829
	1-2	183	3.7466
	3-4	41	3.9299
	5 or more	22	4.2841
DISPOSITIONS Subscale	0	201	3.4776
	1-2	186	3.9231
	3-4	41	4.1024
	5 or more	20	4.4400
OVERALL AVERAGE	0	190	3.4351
	1-2	170	3.8561
	3-4	40	3.9875
	5 or more	19	4.5211

## Current Number of Hours Enrolled

## ANOVA

		Sum of Squares	df	Mean Square	F	Sig.
BEHAVIORAL INTENTIONS Subscale	Between Groups	3.147	2	1.574	1.232	.293
	Within Groups	599.138	469	1.277		
	Total	602.285	471			
KNOWLEDGE Subscale	Between Groups	2.021	2	1.011	.953	.386
	Within Groups	492.087	464	1.061		
	Total	494.108	466			
SKILLS Subscale	Between Groups	.953	2	.477	.450	.638
	Within Groups	487.715	460	1.060		
	Total	488.669	462			
DISPOSITIONS Subscale	Between Groups	.880	2	.440	.404	.668
	Within Groups	495.957	456	1.088		
	Total	496.837	458			
OVERALL AVERAGE	Between Groups	1.082	2	.541	.525	.592
	Within Groups	439.570	427	1.029		
	Total	440.651	429			

Note: None of the ANOVAs reached significance at  $p \leq .05$ .

## Descriptives

		N	Mean
BEHAVIORAL INTENTIONS Subscale	None	11	4.2121
	Less than 12	124	3.6828
	12+	337	3.6686
KNOWLEDGE Subscale	None	11	4.1414
	Less than 12	125	3.7280
	12+	331	3.7063
SKILLS Subscale	None	11	3.8068
	Less than 12	124	3.5343
	12+	328	3.6025
DISPOSITIONS Subscale	None	11	4.0545
	Less than 12	119	3.7681
	12+	329	3.7684
OVERALL AVERAGE	None	11	4.0303
	Less than 12	115	3.7093
	12+	304	3.7144

## Number of Hours Currently Working in a Week

### ANOVA

		Sum of Squares	df	Mean Square	F	Sig.
BEHAVIORAL INTENTIONS Subscale	Between Groups	3.125	3	1.042	.814	.487
	Within Groups	599.160	468	1.280		
	Total	602.285	471			
KNOWLEDGE Subscale	Between Groups	3.437	3	1.146	1.081	.357
	Within Groups	490.671	463	1.060		
	Total	494.108	466			
SKILLS Subscale	Between Groups	5.702	3	1.901	1.806	.145
	Within Groups	482.966	459	1.052		
	Total	488.669	462			
DISPOSITIONS Subscale	Between Groups	4.079	3	1.360	1.256	.289
	Within Groups	492.758	455	1.083		
	Total	496.837	458			
OVERALL AVERAGE	Between Groups	3.909	3	1.303	1.271	.284
	Within Groups	436.742	426	1.025		
	Total	440.651	429			

Note: None of the ANOVAs reached significance at  $p \leq .05$ .

### Descriptives

		N	Mean
BEHAVIORAL INTENTIONS Subscale	0	131	3.6081
	Less than 20	127	3.8110
	20-39	134	3.6791
	40+	80	3.6208
KNOWLEDGE Subscale	0	131	3.6234
	Less than 20	127	3.8276
	20-39	132	3.7660
	40+	77	3.6121
SKILLS Subscale	0	131	3.5468
	Less than 20	125	3.7280
	20-39	127	3.6171
	40+	80	3.3969
DISPOSITIONS Subscale	0	125	3.7200
	Less than 20	126	3.9056
	20-39	130	3.7862
	40+	78	3.6346
OVERALL AVERAGE	0	120	3.6583
	Less than 20	118	3.8545
	20-39	117	3.7356
	40+	75	3.5889

## How Often Attend Religious Activities

## ANOVA

		Sum of Squares	df	Mean Square	F	Sig.
BEHAVIORAL INTENTIONS Subscale	Between Groups	10.553	3	3.518	2.798	.040
	Within Groups	584.512	465	1.257		
	Total	595.065	468			
KNOWLEDGE Subscale	Between Groups	11.375	3	3.792	3.660	.012
	Within Groups	476.475	460	1.036		
	Total	487.849	463			
SKILLS Subscale	Between Groups	6.904	3	2.301	2.214	.086
	Within Groups	473.928	456	1.039		
	Total	480.832	459			
DISPOSITIONS Subscale	Between Groups	5.865	3	1.955	1.823	.142
	Within Groups	484.728	452	1.072		
	Total	490.593	455			
OVERALL AVERAGE	Between Groups	9.144	3	3.048	3.034	.029
	Within Groups	424.959	423	1.005		
	Total	434.103	426			

Note: Highlighted values indicate significant ANOVA at  $p \leq .05$ .

## Descriptives

		N	Mean
BEHAVIORAL INTENTIONS Subscale	Do not attend	110	3.4182
	Once or twice a year	123	3.7046
	Once or twice a month	134	3.7438
	Weekly or more than weekly	102	3.8333
KNOWLEDGE Subscale	Do not attend	108	3.4455
	Once or twice a year	123	3.7173
	Once or twice a month	129	3.8441
	Weekly or more than weekly	104	3.8301
SKILLS Subscale	Do not attend	109	3.3727
	Once or twice a year	121	3.5971
	Once or twice a month	128	3.6387
	Weekly or more than weekly	102	3.7108
DISPOSITIONS Subscale	Do not attend	106	3.5764
	Once or twice a year	120	3.7683
	Once or twice a month	128	3.8305
	Weekly or more than weekly	102	3.8882
OVERALL AVERAGE	Do not attend	100	3.4673
	Once or twice a year	117	3.7054
	Once or twice a month	118	3.8220
	Weekly or more than weekly	92	3.8489



## Marital Status

## ANOVA

		Sum of Squares	df	Mean Square	F	Sig.
BEHAVIORAL INTENTIONS Subscale	Between Groups	.938	1	.938	.733	.392
	Within Groups	594.967	465	1.279		
	Total	595.905	466			
KNOWLEDGE Subscale	Between Groups	3.672	1	3.672	3.473	.063
	Within Groups	487.481	461	1.057		
	Total	491.153	462			
SKILLS Subscale	Between Groups	2.985	1	2.985	2.831	.093
	Within Groups	481.754	457	1.054		
	Total	484.739	458			
DISPOSITIONS Subscale	Between Groups	1.268	1	1.268	1.167	.281
	Within Groups	491.195	452	1.087		
	Total	492.464	453			
OVERALL AVERAGE	Between Groups	1.695	1	1.695	1.654	.199
	Within Groups	435.530	425	1.025		
	Total	437.225	426			

Note: None of the ANOVAs reached significance at  $p \leq .05$ .

## Descriptives

		N	Mean
BEHAVIORAL INTENTIONS Subscale	Married	77	3.5801
	Not Married	390	3.7009
KNOWLEDGE Subscale	Married	78	3.5214
	Not Married	385	3.7593
SKILLS Subscale	Married	78	3.4087
	Not Married	381	3.6234
DISPOSITIONS Subscale	Married	76	3.6566
	Not Married	378	3.7981
OVERALL AVERAGE	Married	72	3.5801
	Not Married	355	3.7484

# APPENDIX

## Civic Engagement Survey Items

### Section I

Please identify your major field(s):

Current number of credit hours enrolled

Age

Gender

- Male
- Female

Number of hours currently working in a week

Marital Status

- Married
- Single
- Divorced
- Other

Number of children in family

Race (optional)

How often do you attend church, synagogue or religious activities

- Do not attend
- Once or twice a year
- Once or twice a month
- Weekly or more than weekly

## Section II

Please indicate how often you have participated in the following as part of your student experiences at SMSU: 1= None/Never 2= Once each school year 3= Once or twice each semester 4= About once a month 5= Nearly every week

Volunteering with others from SMSU for one-time service activities such as: helping out with a Habitat for Humanity project, being part of a food drive, or contributing to the Coats for Kids event

- None/Never
- Once each school year
- Once or twice each semester
- About once a month
- Nearly every week

Volunteering for campus events such as Relay for Life or the annual Chili Feed Cook-off (to support the local food shelf)

Participation in a public debate, working on a political campaign, or assisting with voter registration

Community involvement through a campus organization or club

Community involvement as part of Federal Work Study

Service through another organization not connected with SMSU

Have you ever participated in community service as part of a scholarship?

- No
- Yes

If yes, please enter number of years:

Please estimate the number of courses that you have taken at SMSU that have included community involvement such as volunteer service, community-based learning experiences, one-time service projects, or other service activities:

- 0
- 1-2
- 3-4
- 5 or more courses

Which of the following First Year Experience events have you attended at SMSU?  
(Please check all that apply.)

- Convocation Speaker(s)
- Dennis Donovan lecture- Public Achievement
- George McGovern lecture- Ending Hunger in Our Time
- Paul Loeb lecture - Soul of a Citizen
- First Year Experience follow-up events (eg. Photo exhibit, lecture, fund raiser, service activity, panel discussion)
- Winona LaDuke lecture- Sustainability
- Karl Schmidt lecture- Permaculture
- Craig Howe lecture - Sustainability
- Kent Kapplinger- Art Exhibit
- Barbara Liukkonen lecture – Water Resources

### Section III

Please indicate whether you agree or disagree with the following statements. 1= Strongly Disagree 6= Strongly Agree

[CMG1] My experiences at SMSU have helped me learn a lot about opportunities to become involved in the community.

- 1-Strongly Disagree
- 2
- 3
- 4
- 5
- 6-Strongly Agree

[CMG2] As a result of my experiences at SMSU, other students who know me well would describe me as a person who can discuss controversial social issues with civility and respect.

[CMG3] My experiences at SMSU have prepared me to write a letter to the newspaper or community leaders about a community issue.

[CMG4] My SMSU education has given me the professional knowledge and skills that I need to help address community issues.

[CMG5] My experiences at SMSU have helped make me a good listener, even when peoples' opinions are different from mine.

[CMG6] Based on my experiences at SMSU, I would say that most other students know less about community organizations and volunteer opportunities than I do.

[CMG7] My experiences at SMSU have helped me realize that it is important for me to vote and be politically involved.

[CMG8] My education at SMSU has increased my confidence that I can contribute to improving life in my community.

[CMG9] Because of my SMSU education, I believe that my community is enriched by having some cultural or ethnic diversity.

[CMG10] My experiences at SMSU have helped me realize that when members of my group disagree on how to solve a problem, I like to try to build consensus.

[CMG11] My education at SMSU has made me aware of a number of community issues that need to be addressed.

[CMG12] My experiences at SMSU have increased my motivation to participate in advocacy or political action groups after I graduate.

[CMG13] Through my experiences at SMSU, I am very familiar with clubs and organizations that encourage and support community involvement for college students.

[CMG14] My SMSU experiences helped me realize that I like to be involved in addressing community issues.

[CMG15] Because of the experiences at SMSU, I believe that having an impact on community problems is within my reach.

[CMG16] Because of my SMSU experiences, I plan to stay current with the local and national news after I graduate.

[CMG17] My experiences at SMSU have enabled me to plan or help implement an initiative that improves the community.

[CMG18] My experiences at SMSU have helped me realize that I prefer to work in settings in which I interact with people who are very different from me.

[CMG19] Because of the experiences I have had at SMSU, I feel a deep conviction in my career goals to achieve purposes beyond my own self-interest.

[CMG20] My experiences at SMSU have helped me develop my ability to respond to others with empathy, regardless of their backgrounds.

[CMG21] Because of my experiences at SMSU, I intend to be involved in volunteer service after I graduate.

[CMG22] My education at SMSU has motivated me to stay up to date on the current political issues in the community.

[CMG23] My SMSU education has convinced me that social problems are not too complex for me to help solve.

[CMG24] I believe that I have a responsibility to use the knowledge that I have gained at SMSU to serve others.

[CMG25] My SMSU education has prepared me to listen to others and understand their perspective on controversial issues.

[CMG26] Based on my experiences at SMSU, I would say that the main purposes of work are to improve society through my career.

[CMG27] As a result of my experiences at SMSU, I want to dedicate my career to improving society.

[CMG28] After being a student at SMSU, I feel confident that I will be able to apply what I have learned in my classes to solve real problems in society.

[CMG29] When discussing controversial social issues during my time at SMSU, I have often been able to persuade others to agree with my point of view.

[CMG30] My SMSU experiences have helped me develop a sense of who I am, which now includes a sincere desire to be of service to others.

## Section IV

Please indicate whether you agree or disagree with the following statement by selecting the appropriate number. 1= Strongly Disagree 6= Strongly Agree

I have the responsibility and the commitment to use the knowledge and skills I have gained through my education to collaborate with others to improve society.

- 1-Strongly Disagree
- 2
- 3
- 4
- 5
- 6-Strongly Agree

Please describe the ways in which you agree or disagree with this statement and provide a clear explanation of your opinions.

Are there any other comments you would like to make?